

For office use only

FOOD SUPPLIES AT A GLANCE

2009-10

**FOOD SUPPLIES AND CONSUMER WELFARE
DEPARTMENT
GOVERNMENT OF ORISSA
BHUBANESWAR**

Compiled by:-
Market Intelligence Wing

For office use only

**FOOD
SUPPLIES
AT A GLANCE**

2009-10

**FOOD SUPPLIES AND CONSUMER
WELFARE DEPARTMENT
GOVERNMENT OF ORISSA
BHUBANESWAR**

Compiled by
Market Intelligence Wing

PREFACE

Market Intelligence Wing of Food Supplies and Consumer Welfare Department has brought out the annual booklet "Food Supplies at a Glance-2009-10". This booklet contains vital information, recent circulars, notifications etc. relating to this department which may extend immense help for formulation of plans and policies.

Any error or omission and suggestions for improvements of this booklet may be brought to the notice of the Department.

(Ashok K.K. Meena)
Commissioner-cum-Secretary
Food Supplies and Consumer
Welfare Department

Sri Pravakar Rout
Deputy Director (MI)
F.S. & C.W. Department

I am happy that the Market Intelligence Wing of Food Supplies and Consumer Welfare Department, like every year, has brought out the booklet "Food Supplies at a Glance-2009-10". This year, the booklet contains information regarding policy, notifications and other major relevant circulars. Over the years, this booklet can bring appreciation from all quarters for its utility in areas like policy matters of Government, academic pursuits etc.

I am grateful to Sri Ashok K.K. Meena, IAS, Commissioner-cum-Secretary for his valuable guidance and suggestion in bringing out his booklet. I also sincerely extend my heartfelt thanks to the officers and staff of Market Intelligence Wing in bringing out this issue.

Although all out efforts have been taken to ensure correctness of facts and figures, there might be inadvertent mistake in this booklet. Readers of this booklet are requested to bring any error or omission to the notice of the Department.

(P.K. Rout)

The Team

Advisor : **Sri Ashok.K.K.Meena, IAS**
Commissioner-cum-Secretary

Chief Editor : **Sri Pravakar Rout.**
Dy. Director (M.I)

Sub-Editor : **Sri Rama Narayan Mishra,**
Market Intelligence Officer,
State Hqrs.

Compilers : **Sk. Asak Ali Khan**
Sr. Typist
Mrs. Minati Jagadev
Jr.Clerk

Cover Design : **Sri Achyuta Nanda Prusty**
&
D.T.P
Data Entry Operator

CONTENTS

Sl.No.	Description	Table No.	Page
1	Orissa at a glance	1	1
2	District wise Administrative Setup	2	2
3	Population 2001 Census	3.1	3
4	Towns having population over one lakh	3.2	4
5	Projected Population by Sex in Orissa upto 2026	3.3	5
6	Monthwise State Average Rainfall	4	6
7	Organogram of the Department (Secretariat)	5.1	7
8	Organogram (Field)	5.2	8
9	Districtwise sanction strength of Executive Staffs	5.3	9
10	Market Intelligence : An overview	6.1	10
11	Districtwise selected markets for reporting Market Intelligence	6.2	11
12	Area of jurisdiction with Head quarters of MIO/MIS	6.3	12
13	Delegation of power under E.C Act to M I Staff.	6.4	13
14	List of Regulated Market Committees of Orissa	6.5	14-15
15	Average quantity of consumption	7.1	16
16	Consumption/Requirement of some Essential Commodities	7.2	17
17	Sowing and harvesting period of crops	8.1	18
18	Sowing, harvesting and peak marketing period of principal crops	8.2	19
19	Crop Marketing year	8.3	20
20	Conversion Ratio between the raw materials & the processed products	8.4	21
21	Crop Season for Pulses	8.5	22
22	Production of different Crops in Orissa	8.6	23
23	Districtwise production of Paddy and Rice in Orissa	8.7	24
24	Statewise production of rice during last 5 years	8.8	25
25	Districtwise procurement of Paddy in Orissa	8.9	26
26	Statewise procurement of rice	8.10	27
27	Support price of paddy since 1970-71	9.1	28
28	Minimum support price of Agricultural commodities as fixed by GOI	9.2	29
29	Procurement price, issue price and consumer price of some E.C	9.3	30
30	Issue price of rice, wheat, sugar & kerosene	9.4	31
31	Number of fair price shops functioning in the state	10.1	32
32	Fair price shops as on March 2010	10.2	33
33	District-wise no. of Ration cards March 2010	10.3	34
34	Monthwise allotment & lifting E.C. in the state during 2008-09	11.1	35
35	Monthwise allotment & lifting E.C. in the state during 2009-10	11.2	36
36	Scale of Distribution of P.D. items	11.3	37
37	Districtwise PDS outlet	11.4	38
38	Additional Commodities being distributed through TPDS outlets	11.5	39
39	Monthwise average wholesale prices of some EC in the year 2008-09	12.1	40
40	Monthwise average wholesale prices of some EC in the year 2009-10	12.2	41
41	Monthwise average retail prices of some EC in the year 2008-09	12.3	42
42	Monthwise average retail prices of some EC in the year 2009-10	12.4	43
43	All India Retail Price of Essential Commodities as on 31.03.2010	12.5	44
44	Monthwise sale of Petrol & Diesel in Orissa	12.6	45
45	Price of Diesel, Petrol, LPG etc.	12.7	45
46	Monthly wholesale price index	12.8	46
47	Statement showing Action taken under EC Act in the year 2008-09	13.1	47
48	Statement showing Action taken under EC Act in the year 2009-10	13.2	48
49	Consumer Welfare and Protection	14.1	49-53
50	Activities of Consumer Redressal Forum in the state	14.2	54
51	Quality Control Activities	15	55
52	Districtwise godowns and Mobile vans	16	56
53	Monthwise Activities of Legal Metrology, 2008-09	17.1	57
54	Monthwise Activities of Legal Metrology, 2009-10	17.2	58
55	Telephone numbers of Ministers & Officers of FS & CW Deptt	18.1	59
56	Telephone numbers of CSO's	18.2	60
57	Telephone Numbers of Market Intelligence Officers / O.S.C.S.C. Ltd.	18.3	61
58	Telephone numbers of District Consumer Redressal Forum	18.4	62
59	The Orissa Specified Foodstuffs (Stocks Holding Limit) Order, 2010		63-72

TABLE NO. 1
ORISSA AT A GLANCE

1	Total area (Sq. Kms) 2001	1,55,707
2	Total Population (2001)	3,68,04,660
	(a) Total male	1,86,60,570
	(b) Total female	1,81,44,090
	Decadal Growth rate (1991-2001)	16.25%
3	Density of population per Sq. Km. (2001)	236
4	Total Urban Population (2001)	55,17,238
	(a) Total male	29,11,600
	(b) Total female	26,05,638
5	Total Rural Population (2001)	3,12,87,422
	(a) Total male	1,57,48,970
	(b) Total female	1,55,38,452
6	Total literacy (2001) (Excluding 0 - 6 years)	1,98,37,055
7	Total Scheduled Castes Population (2001) and percentage to total population.	60,82,063 (16.53%)
8	Total Scheduled Tribes Population (1991) and percentage to total population.	81,45,081 (22.13%)
9	Total Number of Villages (2001)	51,349
10	Number of Districts	30
11	Number of Subdivisions	58
12	Number of Tahasils	316
13	Number of Blocks	314
14	Number of Grama Panchayats	6,234
15	Number of Municipal Corporation	3
16	Number of Municipalities	35
17	Number of Notified Area Councils	65

**TABLE NO. 2
DISTRICTWISE ADMINISTRATIVE SETUP**

Sl.No.	Name of the District	Name of the Sub- Divisions	Number of Tahsils	Number of C.D. Blocks	Number of G.Ps	Number of Urban Local Bodies
1	Angul	4	8	8	209	3
2	Balasore	2	12	12	289	4
3	Bargarh	2	12	12	248	3
4	Bhadrak	1	7	7	193	2
5	Bolangir	3	14	14	285	4
6	Boudh	1	3	3	63	1
7	Cuttack	3	15	14	342	4
8	Deogarh	1	3	3	60	1
9	Dhenkanal	3	8	8	199	3
10	Gajpati	1	7	7	129	2
11	Ganjam	3	22	22	475	18
12	Jagatsinghpur	1	8	8	194	2
13	Jajpur	1	10	10	280	2
14	Jharsuguda	1	5	5	78	3
15	Kalahandi	2	13	13	273	3
16	Kendrapada	1	9	9	230	2
17	Keonjhar	3	13	13	286	4
18	Khurda	2	10	10	168	5
19	Koraput	2	14	14	226	4
20	Malkangiri	1	7	7	108	2
21	Mayurbhanj	4	26	26	382	4
22	Nawarangpur	1	10	10	169	2
23	Nayagarh	1	8	8	179	2
24	Nuapada	1	5	5	109	2
25	Phulbani	2	12	12	153	2
26	Puri	1	11	11	230	4
27	Rayagada	2	11	11	171	3
28	Sambalpur	3	9	9	148	5
29	Sonepur	2	6	6	96	3
30	Sundargarh	3	18	17	262	4
	TOTAL	58	316	314	6234	103

SOURCE : Panchayati Raj Department (Legal Section)

**TABLE NO. 3.1
POPULATION 2001 CENSUS**

Sl.No	Name of the District	Total	Rural	Urban	Male	Female
1	Angul	114003	981587	158416	587234	552769
2	Balasore	2024508	1804140	220368	1036511	987997
3	Bargarh	1346336	1242795	103541	681500	664836
4	Bhadrak	1333749	1192678	141071	675642	658107
5	Bolangir	1337194	1182871	154323	673985	663209
6	Boudh	373372	355347	18025	188155	185217
7	Cuttack	2341094	1699964	641130	1207781	1133313
8	Deogarh	274108	254012	20096	138408	135700
9	Dhenkanal	1066878	973964	92914	544001	522877
10	Gajpati	518837	465949	52888	255423	263414
11	Ganjam	3160635	2604276	556359	1581986	1578649
12	Jagatsinghpur	1057629	953180	104449	538881	518748
13	Jajpur	1624341	1551361	72980	823747	800594
14	Jharsuguda	509716	323831	185885	261941	247775
15	Kalahandi	1335494	1235275	100219	667526	667968
16	Kandhamal	648201	604107	44094	322799	325402
17	Kendrapada	1302005	1227868	74137	646438	655567
18	Keonjhar	1561990	1348967	213023	790036	771954
19	Khurda	1877395	1071689	805706	986886	890509
20	Koraput	1180637	982188	198449	590743	589894
21	Malkangiri	504198	469582	34616	252507	251691
22	Mayurbhanj	2223456	2067756	155700	1123200	1100256
23	Nawarangpur	1025766	966496	59270	515162	510604
24	Nayagarh	864516	827450	37066	446177	418339
25	Nuapada	530690	500652	30038	264396	266294
26	Puri	1502682	1298654	204028	763389	739293
27	Rayagada	831109	715702	115407	409792	421317
28	Sambalpur	935613	681835	253778	475122	460491
29	Sonepur	541835	501767	40068	275601	266234
30	Sundargarh	1830673	1201479	629194	935601	895072
	Total	36804660	31287422	5517238	18660570	18144090

Source : Director of Census Operation, Orissa

TABLE NO. 3.2
TOWNS HAVING POPULATION OVER ONE LAKH
 (As per 2001 Census)

Sl.No.	Name of the towns	Name of the District	Population
1	BHUBANESWAR (M.C)	KHURDA	657477
2	CUTTACK (M.C)	CUTTACK	535139
3	BERHAMPUR (M)	GANJAM	289724
4	ROURKELA (M)	SUNDARGARH	224601
5	ROURKELA (IT)	SUNDARGARH	213231
6	SAMBALPUR (M)	SAMBALPUR	157763
7	PURI (M)	PURI	157610
8	BALESHWAR (M)	BALESHWAR	127316
9	BARIPADA (M)	MAYURBHANJ	100593

Source : Director of Census Operation, Orissa.

TABLE NO. 3.3
PROJECTED POPULATION BY SEX IN ORISSA UP TO 2026
 (IN ' 000)

YEAR	MALE	FEMALE	TOTAL
2001	18740	18231	36971
2002	18991	18472	37463
2003	19231	18709	37940
2004	19467	18942	38409
2005	19697	19169	38866
2006	19916	19387	39303
2007	20127	19598	39725
2008	20332	19803	40135
2009	20532	20000	40532
2010	20726	20200	40926
2011	20917	20394	41311
2012	21104	20585	41689
2013	21286	20772	42058
2014	21471	20962	42433
2015	21638	21137	42775
2016	21815	21321	43136
2017	21983	21498	43481
2018	22144	21666	43810
2019	22304	21836	44140
2020	22458	22003	44461
2021	22605	22166	44771
2022	22748	22325	45073
2023	22885	22481	45366
2024	23015	22632	45647
2025	23136	22779	45915
2026	23254	22924	46178

Source: Director of census operation, Orissa.

**TABLE NO.4
MONTHWISE STATE AVERAGE RAINFALL**

MONTH	2007 - 08			2008 - 09			2009 - 10		
	ACTUAL	NORMAL	DEPARTURE	ACTUAL	NORMAL	DEPARTURE	ACTUAL	NORMAL	DEPARTURE
APRIL	21.7	35.4	-39	34.5	36.1	-4	1.0	33.1	-97
MAY	68.5	58.1	18	44.8	59.6	-25	71.3	63.3	13
JUNE	335.7	204.7	64	340.1	206.1	65	85.4	216.5	-61
JULY	294.0	343.6	-14	319.4	344.6	-7	602.6	339.9	77
AUGUST	423.7	363.3	17	391.6	364.8	7	283.7	356.0	-20
SEPTEMBER	393.6	248.4	58	367.4	249.4	47	175.1	231.9	-24
OCTOBER	71.3	120.3	-41	27.2	121.4	-78	110.2	114.7	-4
NOVEMBER	16.4	27.6	-41	3.4	28.3	-88	28.1	31.5	-11
DECEMBER	0.0	5.5	-100	0.0	5.5	-100	0.0	4.5	-100
JANUARY	32.4	12.1	168	0.0	12.1	-100	0.0	12.1	-100
FEBRUARY	15.1	19.8	-24	0.0	19.8	-100	11.6	19.8	-41
MARCH	23.3	24.8	-6	3.7	24.8	-85	4.9	24.8	-80
ANNUAL AVG.	141.3	122.0	5.0	141.3	122.0	5.0	114.5	120.7	-37.4

(9)

Source : Director of Meteorological Centre, Government of India, Air Port, Bhubaneswar - 9.

TABLE NO. 5.2
FOOD SUPPLIES AND CONSUMER WELFARE DEPARTMENT
(FIELD)

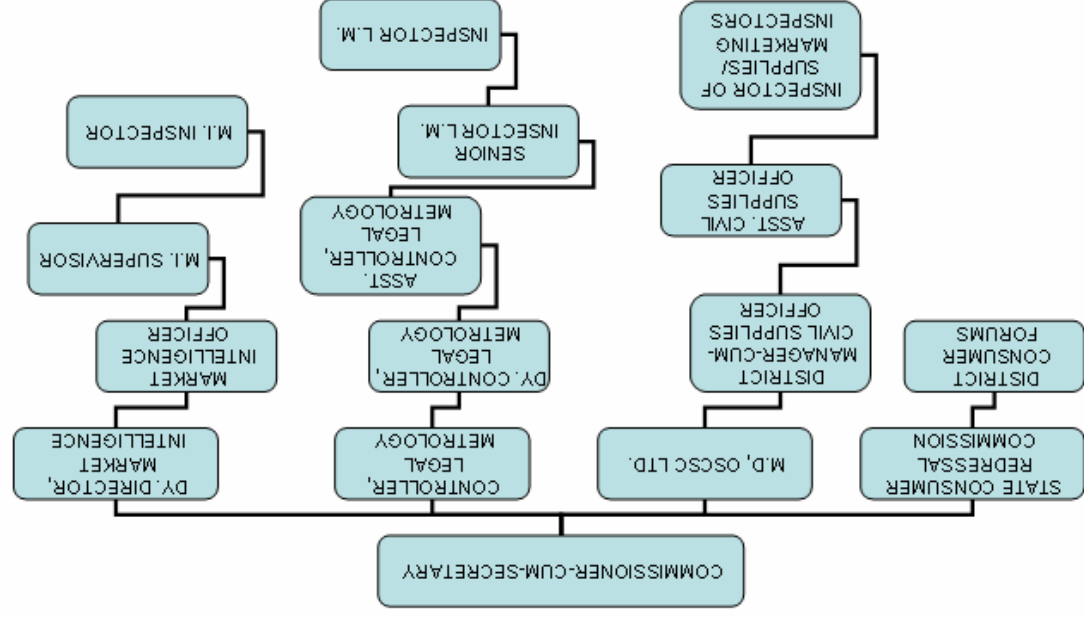


TABLE NO. 5.3
District wise Sanction Strength of Executive Staff

District	CSO	ACSO	MIO	MIS	I.S	MII
Angul	1	6			13	1
Balasore	1	6	1	1	16	1
Baragarh	1	5			17	1
Bhadrak	1	3			9	1
Bolangir	1	6			18	1
Boudh	1	1			4	1
Cuttack	1	9	1	1	23	1
Deogarh	1	1			3	1
Dhenkanal	1	5			12	1
Gajapati	1	3			9	1
Ganjam	1	7	1	1	34	2
Jagatsinghpur	1	3			11	1
Jajpur	1	3			13	1
Jharsuguda	1	3			7	1
Kalahandi	1	6	1	1	17	1
Kandhamal	1	4			14	1
Kendrapada	1	3			12	1
Keonjhar	1	7	1	1	21	1
Khurda	1	7	1	1	20	2
Koraput	1	4	1	1	20	1
Malkangiri	1	4			9	1
Mayurbhanj	1	6			32	1
Nayagarh	1	2			9	1
Nowarangpur	1	3			12	1
Nuapada	1	3			8	1
Puri	1	3			14	1
Rayagada	1	5			12	1
Sambalpur	1	7	1	1	18	1
Sonepur	1	4			8	1
Sundargarh	1	7	1	1	25	2
State Hqrs.			1	3	3	1
TOTAL	30	136	10	12	443	34
<i>CSO- Civil Supplies Officer ACSO- Assistant Civil Supplies Officer MIO- Market Intelligence Officer MIS- Market Intelligence Supervisor I S- Inspector of Supplies MII - Market Intelligence Inspector</i>						

TABLE NO. 6.1
MARKET INTELLIGENCE : AN OVERVIEW

The Organisation

A small but important Directorate is functioning in Food, Supplies and Consumer Welfare Department under direct supervision of Commissioner-cum-Secretary to Government, Food, Supplies and Consumer Welfare Department. The Market Intelligence organisation was transferred from Marketing Directorate of Agriculture Department and merged in the erstwhile Food and Civil Supplies Department in the year 1964 following the Cabinet Resolution dated 02.12.1964. The organisation is an integral part of Food, Supplies and Consumer Welfare Department and it has been discharging its function in right earnest.

Structure

Name of the post	Sanctioned Post	Man in Position	Area of jurisdiction
Deputy Director	1	1	Whole of the State
Asst. Director	1		Whole of the State
Market Intelligence Officer (Hqrs)	1	1	Whole of the State
Market Intelligence Officers in different sectors	9	3	Within their areas of jurisdiction
Market Intelligence Supervisors (Hqrs)	3		Whole of the State
Market Intelligence Supervisors in different sectors	9	3	Within their areas of jurisdiction
Market Intelligence Inspectors	34	8	Within the area as recommended by the district authorities

Objectives

1	To act as a support system to the decision making process in formulating policies.
2	Taking action under EC Act, against unscrupulous traders, profiteers and black marketeers etc.
3	Monitoring of prices and availability of essential commodities in open market through computer network.
4	Making available of market intelligence information to Department of Consumer Affairs, Ministry of Agriculture, Department of Food and Public Distribution / Ministry of Industries / Ministry of Defence etc. of Government of India and Reserve Bank of India / Doordarsan/FCI etc.
5	Study of various economic forces, future market trade and to suggest market intervention to overcome scarcity or any abnormal situation for the benefit of the bonafide consumers of our state.

**TABLE NO. 6.2
DISTRICT WISE SELECTED MARKETS FOR REPORTING
MARKET INTELLIGENCE**

Sl. No.	District	Name of the Selected Centres
1	Angul	Angul
2	Balasore	Balasore
3	Bargarh	Bargarh
4	Bhadrak	Bhadrak
5	Bolangir	Bolangir
6	Boudh	Boudh
7	Cuttack	Cuttack
8	Deogarh	Deogarh
9	Dhenkanal	Dhenkanal
10	Gajapati	Paralakhemundi
11	Ganjam	Berhampur
		Chhatrapur
12	Jagatsinghpur	Jagatsinghpur
13	Jajpur	Jajpur
14	Jharsuguda	Jharsuguda
15	Kalahandi	Bhawanipatna
16	Kendrapada	Kendrapara
17	Keonjhar	Keonjhar
18	Khurda	Bhubaneswar
		Khurda
19	Koraput	Jeypore
20	Malkangiri	Malkangiri
21	Mayurbhanj	Baripada
22	Nayagarh	Nayagarh
23	Nawarangpur	Nawarangpur
24	Nuapada	Khariar Road
25	Phulbani	Phulbani
26	Puri	Puri
27	Rayagada	Rayagada
28	Sambalpur	Sambalpur
29	Sonepur	Sonepur
30	Sundargarh	Sundargarh
		Rourkela

TABLE NO. 6.3
AREA OF JURISDICTION WITH HEADQUARTERS OF
MARKET INTELLIGENCE OFFICERS/ SUPERVISOR

Sl. No.	Name of the M.I. Sector	Headquarters	Area Covered
1	BALASORE	BALASORE	1 BALASORE 2 BHADRAK 3 MAYURBHANJ
2	CUTTACK	CUTTACK	1 CUTTACK 2 KENDRAPARA 3 DHENKANAL 4 JAGATSINGHPUR
3	GANJAM	BERHAMPUR	1 GANJAM 2 GAJAPATI 3 PHULBANI
4	KALAHANDI	BHAWANIPATNA	1 KALAHANDI 2 NUAPADA 3 BOLANGIR 4 SONEPUR
5	KEONJHAR	KENONJHAR	1 KEONJHAR 2 JAJPUR
6	KORAPUT	JEYPORE	1 KORAPUT 2 RAYAGADA 3 MALKANGIRI 4 NAWARANGPUR
7	PURI	BHUBANESWAR	1 PURI 2 KHURDA 3 NAYAGARH 4 BOUDH
8	SAMBALPUR	SAMBALPUR	1 SAMBALPUR 2 DEOGARH 3 BARAGARH 4 ANGUL
9	SUNDARGARH	ROURKELA	1 SUNDARGARH 2 JHARSUGUDA

* Food, Supplies & Consumer Welfare Department
Notification No. 14320, dt. 16.4.94.

**TABLE NO. 6.4
Delegation of powers under E.C.Act to M.I.. Staff.**

Sl. No.	Name of the Control Order	To whom delegated	Notification No. and Date
1	2	3	4
1	Orissa Kerosene Control Order, 1962	M.I. Officers M.I. Supervisors, M.I. Inspectors	No. 365/83 dated 15.07.83
2	Orissa Rice & Paddy Control Order, 1965	M.I. Officers M.I. Supervisors M.I. Inspectors	No. 374/83 dt. 15.07.83
3	Orissa Declaration of Stocks and Prices of Essential Commodities Order, 1973	Dy. Director,(M.I.) Asst.Director,(MI) M.I. Officers	
4	Orissa Essential Food Stuff (Prevention of Hoarding and Requisition of Stock) Order, 1974	Dy. Director,(M.I.), Asst.Director,(MI) M.I. Officers M.I. Supervisors	No. 150 dt. 28.02.1974
5	Orissa Prohibition of withholding from Sale of Essential Commodities Order, 1977	M.I. Officers M.I. Supervisors M.I. Inspectors	No. 370/83 dt. 15.07.83
6	Orissa Petroleum Products (Sale by Retail Outlets) Order, 1978	Dy. Director,M.I. M.I. Officers	No. 368/83 dt. 15.07.83
7	The Orissa Essential Commodities (Requisitioning of Stocks) Order, 1979	Dy. Director,(M.I.) Asst.Director,(MI) M.I. Officers M.I. Supervisors	No. 168 dt. 31.01.79
8	Orissa Motor Spirit and High Speed Diesel Oil (Maintenance of supplies) Order, 1979	M.I. Officers M.I. Supervisors M.I. Inspectors	No. 366/83 dt. 15.07.83
9	Orissa High Speed Diesel /Dealers licensing) Order, 1979	M.I. Officers M.I. Supervisors	No. 67/83 dt. 15.07.83
10	Orissa Rice and Paddy Procurement (Levy) and restriction on sale and movement Order, 1982	M.I. Officers M.I. Supervisors M.I. Inspectors	No. 377/83 dt. 15.07.83
11	The Kerosene (Restriction on use and Fixation of ceiling price) Order, 1993.	Dy. Director,(M.I.) Asst.Director,(MI) M.I. Officers	No. 509(E) dt. 07.07.1994
12	Lubricating Oils and Grease (Processing Supply and Distribution) Order, 1997	Dy. Director,(M.I.)	No. 13327 dt. 06.05.1989
13	Edible Oils packaging (Regulation) Order, 1998	Dy. Director,(M.I.) Asst.Director,(MI) M.I. Officers M.I. Supervisors	No. 25630 dt. 19.09.2000
14	Petroleum Products (Maintenance of Production,Storage and Supply) Order, 1999	Dy. Director,(M.I.) Asst.Director,(MI) M.I. Officers	No. 32522 dt. 16.12.99
15	Solvent, Raffinate and Slip (Acquisition, Sale, Storage and Prevention of use in Automobiles) Order, 2000	Dy. Director,(M.I.), Asst.Director,(MI) M.I. Officers	No. 20013 dt. 27.07.2000
16	The Naphtha (Acquisition,Sale, Storage and Prevention of use in Automobiles) Order, 2000	Dy. Director,(M.I.) Asst.Director,(MI) M.I. Officers	No.20144 dt. 29.07.2000
17	The Liquefied Petroleum Gas (Restriction of Supply and Distribution) Order, 2000	Dy. Director,(M.I.) Asst.Director,(MI) M.I. Officers	No.20151 dt. 29.07.2000
18	Orissa Public Distribution System (Control) Order, 2002 and Orissa Public Distribution System(Control) Order,2008	Dy. Director,(M.I.) Asst.Director,(MI) M.I. Officers M.I. Supervisors M I Inspectors	No. 10618 dt. 23.04.02 and No.7450 dt.29.03.08
19	Motor Spirit and High Speed Diesel (Regulation of Supply, Distribution and prevention of Malpractices) Order, 2005.	Dy. Director,(M.I.) Asst.Director,(MI) M.I. Officers	No.12650 dt. 29.06.2007

Sl.No.	Name of District	Name of the Sub-Division	Name of the R.M.C.
18	Keonjhar	Anandpur Keonjhar Champua	36 Anandpur 37 Keonjhar 38 Champua
19	Khurda	Bhubaneswar Khurda	39 Jatni 40 Balugaon
20	Koraput	Koraput Jeypore	41 Koraput 42 Jeypore
21	Malkangiri	Malkangiri	43 Malkangiri
22	Mayurbhanj	Baripada Rairangpur (Bamer Udala(Kaptipada) Karanjia (Anandpur)	44 Baripada 45 Betnoti 46 Udala 47 Karanjia
23	Nayagarh	Nayagarh	48 Bahadajhola
24	Nowarangpur	Nowarangpur	49 Nowarangpur
25	Nuapada	Nuapada	50 Khariar Road
26	Puri	Puri	51 Sakhigopal 52 Nimapara
27	Rayagada	Rayagada Gunpur	53 Rayagada 54 Gunpur
28	Sambalpur	Sambalpur Rairakhol Kuchinda	55 Sambalpur 56 Rairakhol 57 Kuchinda
29	Sonepur	Sonepur Birmaharajpur	58 Dunggripalli 59 Birmaharajpur
30	Sundargarh	Sundargarh Panposh Bonaigarh	60 Sargipalli 61 Panposh 62 Bonaigarh

Source : Co-operation Department

TABLE No. 7.1

Average Quantity (in Kg.) of consumption of cereals, pulses and edible oils per person for a period of 30 days in Urban & Rural areas of Orissa.

ITEMS	RURAL	URBAN
RICE	13.12	10.33
WHEAT	0.49	2.16
TOTAL CEREALS	13.75	12.52
TOTAL PULSES*	0.50	0.70
TOTAL EDIBLE OIL*	0.29	0.42
SUGAR*	0.35	0.53
POTATO*	1.81	1.83
ONION*	0.42	0.58

**Source:- NSS 61st Round (July 2004 to June 2005)*

Average Value (in Rs.) of consumption of food items per person for a period of 30 days in Urban & Rural areas of Orissa.

ITEMS	RURAL	URBAN
RICE	127.73	125.92
WHEAT	7.95	37.51
TOTAL CEREALS	136.57	163.88
TOTAL PULSES	16.03	30.09
EDIBLE OILS	21.49	37.46
SUGAR	7.47	11.60
POTATO*	11.93	12.75
ONION*	3.25	4.25

Source:- NSS 64th Round (July 2007 to June 2008)

**Source:- NSS 61st Round (July 2004 to June 2005)*

**TABLE NO. 7.2
CONSUMPTION/REQUIREMENT OF SOME ESSENTIAL COMMODITIES**

PROJECTED POPULATION 2008 : 4,09,26,000
URBAN 60,57,048
RURAL 3,48,68,952

Commodities	Per Capita Consumption for 30 days (in kg.)		Per Capita Consumption per Annum (in kg.)		Consumption per month (in MT)	Total Consumption per year (in MT)	Nearest to lakh MT.
	URBAN	RURAL	URBAN	RURAL			
RICE	10.33	13.12	123.96	157.44	5,20,049.96	62,40,599.47	62.00
WHEAT	2.16	0.49	25.92	5.88	30,169.01	3,62,028.12	3.62
TOTAL CEREALS	12.52	13.75	150.24	165.00	5,55,282.33	66,63,387.97	66.63
SUGAR	0.53	0.35	6.41	4.22	15,508.33	1,86,100.02	1.86
PULSES	0.70	0.50	8.44	5.96	21,587.97	2,59,055.69	2.59
EDIBLE OILS	0.42	0.29	5.05	3.42	12,487.67	1,49,852.02	1.50
POTATO	1.83	1.81	21.97	21.72	74,203.26	8,90,439.10	8.90
ONION	0.58	0.42	6.90	5.08	18,232.37	2,18,788.43	2.19

(House hold sectors only)

Total pulses comprises of Arhar Dal - 31%, Mung Dal - 50%, Others - 19%

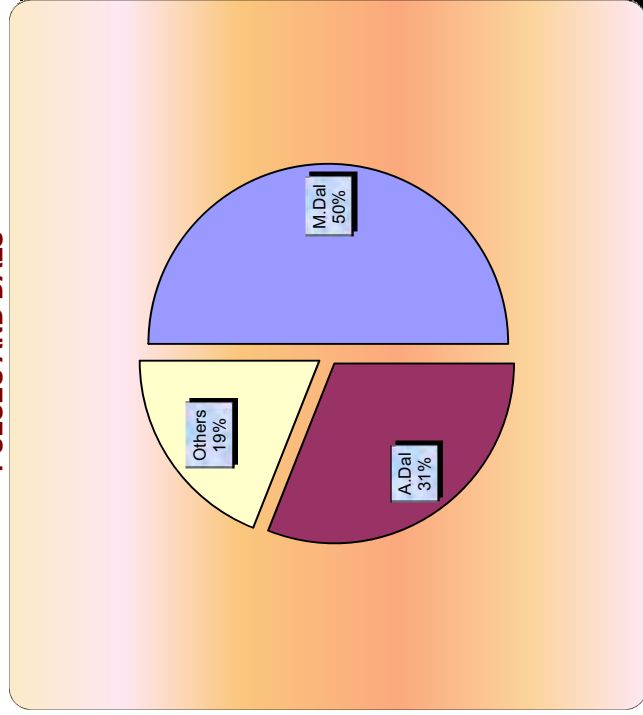
So Arhar dal = 79,000 MT, Mung Dal = 1,27,000 MT, Others = 48,000 MT.

Total Edible Oil comprises Mustard Oil = 30%, Refined Oil = 47% Others = 15%, Vanaspati = 8%

So M.Oil = 43,500 MT, Refined Oil = 70,000 MT, Others = 22,000 MT Vanaspati = 11,500 MT.

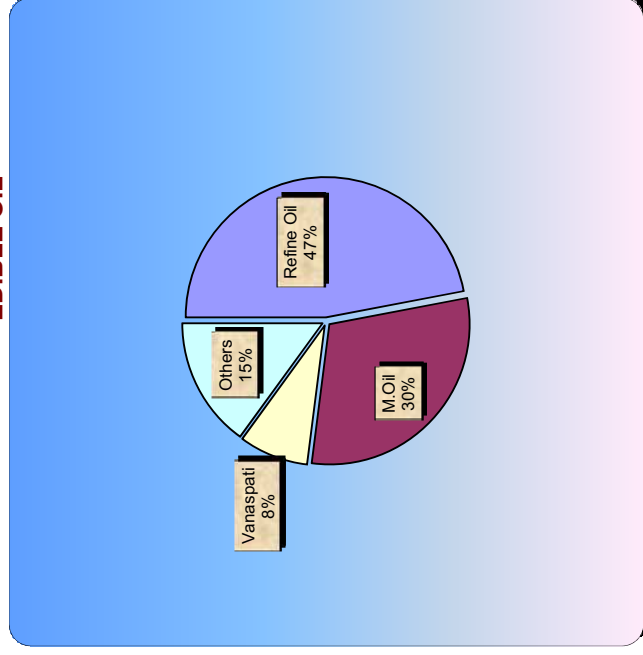
This calculation is made of the basis of N.S. Report (61th Round)

PULSES AND DALS



PATTERN OF CONSUMPTION

EDIBLE OIL



Source : Last years Arrival

TABLE NO. 8.1
SOWING AND HARVESTING PERIOD OF CROPS

SEASON	PERIOD	SOWING PERIOD	HARVESTING PERIOD	PRINCIPAL CROP
Kharif	May to middle of Oct.	Generally at the beginning of the South-west monsoon - May to July	At the end of the South-west monsoon - Sept. To Oct. (may continue upto Nov. in some cases)	Rice, Jowar, Barja, Maize, Ragi, Tur, Mung, Castor, Urad, Sugarcane, Groundnut, Sesamum, Tobacco, Jute and Cotton.
Zaid Kharif	August to January	August to September	December to January	Rice, Jowar, Rapeseed & Mustard, Cotton, Toria and other Oilseeds.
Rabi	Middle of October to middle of April.	At the beginning of the cold wheather - October to December	February to April (may continue till May in some cases).	Wheat, Barly, Gram, Linseed, Mustard, Masur, Peas, Oats and Potatoes.
Zaid Rabi	Beginning of February to beginning of May	At the beginning of hot weather - February to March	Middle of April to May (may continue upto June in some cases).	Water melons, Toria, Jowar and Maize for fodder.

(18)

Source : Directorate of Economics & Statistics, Department of Agriculture & Co-op., Govt. of India.

**TABLE NO. 8.2
SOWING, HARVESTING AND PEAK MARKETING PERIOD OF PRINCIPAL
CROPS IN ORISSA**

Season	Crops	Sowing period	Harvesting period	Peak marketing period
K H A R I F	Paddy	May - August	September-December	October-January
	Ragi	May-July	August-November	September-November
	Mung	June-August	August-October	September-November
	Biri	June-August	August-October	September-November
	Groundnut	June-July	September-November	October-December
R A B I	Paddy	December-February	April-May	May-July
	Wheat	November-December	February-April	March-May
	Mung	October-February	January-May	December-April
	Biri	October-February	January-May	December-April
	Kulthi	September-November	December-January	January-February
	Groundnut	October-February	January-May	February-May
	Mustard	September-December	December-March	January-April
	Potato	October-December	January-March	February-March
	Onion	November-December	March-April	March-April

Source: Directorate of Agriculture & Food Production, Orissa

TABLE NO. 8.3
CROP MARKETING YEAR

Name of crop	Duration of Marketing Year	Duration of peak marketing period
Rice	October to September	November - February
Wheat	April to March	May - June
Sugarcane	October to September	December - March
Kharif Oilseeds	November to October	November - February
Rabi Oilseeds	April to March	April - June

(20)

Note : *The beginning of the period denotes the time when generally the crop arrives in the market.*

Source : *Directorate of Economics & Statistics, Department of Agriculture & Co-op., Govt. of India.*

TABLE NO. 8.4
CONVERSION RATIO BETWEEN THE RAW MATERIAL AND THE PROCESSED PRODUCTS

Commodity	Ratio	Commodity	Ratio
<u>Rice</u>		<u>Cocunut</u>	
Rice (Cleaned) production	2/3 of paddy production (67-68 %)	Copra to nuts	One tonne of copra = 6773 nuts
		Oil to copra crushed	38%
<u>Groundnut</u>		<u>Sugar</u>	
Kernel to nuts in shell	70%	Gur from cane crushed	10%
Oil to nuts in shell	28%	Crystal sugar from gur refined (Gur-refineries)	62.4%
Oil to kernel crushed	40%	Crystal sugar from cane crushed (Cane factories)	9.97%
Cake to kernel crushed	60%	Khandsari sugar from gur refined	37.5%
		Molasses from cane crushed	3.5%
<u>Sesamum</u>		Cane thrash from cane harvested	
Oil to seeds crushed	40%		
Cake to seeds crushed	60%		
<u>Rapeseed & Mustard</u>			
Oil to seeds crushed	33%		
Cake to seeds crushed	67%		

(21)

Source : Directorate of Economics & Statistics, Department of Agriculture & Co-op., Government of India.

TABLE NO. 8.5
Crop Season for Pulses

Sl. No.	Name	Crop Season	Main Growing States	Percentage of Total Production
1	Gram	Rabi	M.P., Rajasthan , U.P., Haryana	32
2	Masoor	Rabi	MP,UP,Bihar	6
3	Arhar	Rabi	MP,UP,Bihar	18
4	Arhar	Kharif	Maharashtra, Karnataka, A.P.,Haryana,Gujrat	18
5	Urad	Kharif	Rajasthan, Maharashtra, A.P.,Karnataka,West Bengal,Orissa	14
6	Moong	Kharif/Rabi	Maharashtra,Rajasthan, A.P.,Karnataka,Bihar,Tamil Nadu,U.P.	13
7	Others*	Rabi/Kharif	Maharashtra,A.P.,Rajasthan, U.P.,M.P., Bihar	17

* Includes Rajmah, Moth, Lobia, and Peas etc.

Crop Season	Sowing Period	Harvesting Period
Rabi	September - October	February - March
Kharif	June - July	September - October

Consumption Pattern

Pulses, largely consumed in whole and processed form are Gram (Desi and Kabuli), Arhar (Tur), Urad, Moong, Masoor, Peas and Rajmah. Gram is consumed in most parts of country, Arhar in Western, Southern and Northern areas, Moong and Urad in Northern, Southern and Central parts and Masoor in Eastern , North-Eastern and South India.

TABLE NO. 8.6
PRODUCTION OF DIFFERENT CROPS IN ORISSA FROM 2000-2001 TO 2009-10

(in 000'MT)

Sl.No.	Crops	2000-01	2001-02	2002-03	2003-04	2004-05	2005-06	2006-07	2007-08	2008 -09
1	Rice	4613.00	7148.98	3243.60	6734.00	6537.00	6963.00	6928.00	7655.02	6915.96
2	Wheat	20.12	27.26	18.91	25.18	21.83	23.67	23.78	27.86	30.22
3	Ragi	151.55	144.59	127.49	139.71	142.01	141.81	144.25	165.29	163.83
4	Mung	153.88	239.58	151.50	200.14	211.02	269.11	293.13	306.05	341.79
5	Biri	142.87	225.96	134.28	184.41	184.95	218.32	242.83	254.70	276.29
6	Groundnut	228.41	333.55	217.23	336.68	351.28	342.39	378.91	428.89	458.55
7	Sesamum	59.79	103.90	43.80	76.50	88.38	103.79	105.95	101.65	128.08
8	Rapeseed & Mustard	25.54	39.21	25.33	32.51	29.01	39.63	40.71	41.37	42.10
9	Potato	85.86	78.40	70.32	75.82	16.51	16.44	79.31	94.25	75.58
10	Onion	229.42	172.53	238.79	240.34	241.85	243.87	260.00	262.37	278.87

(23)

Source : Directorate of Agrl. & Food Prodn., Orissa.

TABLE NO. 8.7
DISTRICT-WISE PRODUCTION OF PADDY AND RICE IN ORISSA

DISTRICT	2005-06		2006-07		2007-08		2008 - 09		2009 - 10(P)		AVERAGE	
	PADDY	RICE	PADDY	RICE	PADDY	RICE	PADDY	RICE	PADDY	RICE	PADDY	RICE
Angul	263.42	179.12	230.14	154.19	133.60	90.85	200.12	136.08	200.72	136.49	205.60	139.35
Balasore	567.40	385.83	987.38	364.15	589.55	400.90	524.75	356.83	582.45	396.07	650.31	380.75
Baragarh	833.14	566.53	915.01	613.06	960.89	653.41	945.83	643.16	977.24	664.52	926.42	628.14
Bhadrak	509.84	346.69	451.58	302.56	465.15	316.30	514.11	349.59	564.67	383.98	501.07	339.83
Bolangir	456.00	310.08	477.92	320.20	590.25	401.37	465.17	316.32	479.97	326.38	493.86	334.87
Boudh	157.62	107.18	169.60	113.63	161.88	110.08	139.04	94.55	129.40	87.99	151.51	102.69
Cuttack	455.63	309.83	310.80	208.24	382.64	260.20	282.42	192.05	300.87	204.59	346.47	234.98
Deogarh	102.76	69.87	101.22	67.82	89.15	60.62	86.88	59.08	88.45	60.15	93.69	63.51
Dhenkanal	344.56	234.30	245.80	164.69	333.96	227.09	276.64	188.12	284.75	193.63	297.14	201.57
Gajapati	71.24	48.44	103.09	69.07	111.98	76.15	65.10	44.27	63.12	42.92	82.91	56.17
Ganjam	514.23	349.68	865.47	579.86	926.88	630.28	708.28	481.63	723.96	492.29	747.76	506.75
Jagatsinghpur	256.40	174.35	207.00	138.69	234.39	159.38	267.34	181.79	279.55	190.09	248.94	168.86
Jajpur	362.78	246.69	270.65	181.33	309.32	210.34	316.81	215.43	326.13	221.77	317.14	215.11
Jharsuguda	154.31	104.93	170.89	114.50	154.95	105.37	152.90	103.97	149.10	101.39	156.43	106.03
Kalahandi	464.97	316.18	438.51	293.80	539.01	366.52	522.31	355.17	545.57	370.99	502.07	340.53
Kandhamal	109.48	74.45	115.48	77.37	110.29	75.00	110.41	75.08	107.07	72.81	110.55	74.94
Kendrapada	355.19	241.53	227.42	152.37	296.73	201.77	299.81	203.87	310.15	210.90	297.86	202.09
Keonjhar	428.10	291.10	395.42	264.93	508.99	346.11	414.93	282.15	423.70	288.12	434.23	294.48
Khurda	312.38	212.42	297.59	199.38	267.68	182.02	243.45	165.55	255.19	173.53	275.26	186.58
Koraput	337.57	229.54	334.67	224.23	371.20	252.42	317.40	215.83	343.51	233.59	340.87	231.12
Malkangiri	195.24	132.76	185.77	127.47	217.68	148.02	167.69	114.03	147.33	100.18	182.74	124.49
Mayurbhanj	704.79	479.26	748.40	501.43	857.98	583.43	809.84	550.69	831.39	565.35	790.48	536.03
Nayagarh	239.79	163.05	227.98	152.75	265.44	180.50	198.84	135.21	198.48	134.97	226.11	153.30
Nowarangpur	308.72	209.93	326.50	218.76	344.43	234.22	292.08	198.61	303.34	206.27	315.02	213.56
Nuapada	156.14	106.18	179.69	120.39	301.51	205.03	225.03	153.02	228.64	155.48	218.20	148.02
Puri	429.96	292.38	368.01	246.57	392.91	267.18	307.60	209.17	390.21	265.34	377.74	256.13
Rayagada	108.25	73.61	164.58	110.27	198.02	134.65	147.49	100.29	154.52	105.07	154.57	104.78
Sambalpur	445.71	303.08	437.28	292.98	478.72	325.53	503.19	342.17	501.03	340.70	473.19	320.89
Sonepur	381.98	259.74	417.12	279.47	379.75	258.23	368.27	250.42	341.42	232.17	377.71	256.01
Sundargarh	364.89	248.13	413.36	276.96	455.46	309.71	448.60	305.05	436.69	296.95	423.80	287.36
TOTAL	10392.49	7066.89	10784.33	6931.12	11430.40	7772.67	10322.33	7019.18	10668.62	7254.66	10719.64	7208.91

Source : Directorate of Economics and Statistics

TABLE NO. 8.8
State wise production of rice during the last five years

(in lakh tonnes)

Sl.No.	State/Uts	2004-05	2005-06	2006-07	2007-08	2008-09\$
1	ANDHRA PRADESH	96.01	117.04	118.72	132.26	142.07
2	ASSAM	34.71	35.52	29.16	27.83	37.75
3	BIHAR	24.72	34.95	49.89	44.95	56.69
4	CHATTISGARH	43.83	50.12	50.41	54.26	43.92
5	GUJARAT	12.38	12.98	13.90	14.91	12.90
6	HARYANA	30.23	32.10	33.71	36.13	32.98
7	HIMACHAL PRADESH	1.22	1.12	1.23	1.21	1.19
8	JHARKHAND	16.77	15.58	29.68	30.15	33.05
9	KERALA	6.67	6.29	6.31	5.46	5.89
10	KARNATAKA	35.47	57.44	34.46	35.48	36.90
11	MADHYA PRADESH	11.69	16.56	13.68	12.85	15.60
12	MAHARASHTRA	21.64	26.95	25.69	29.67	23.11
13	ORISSA	64.66	68.59	68.24	75.07	67.62
14	PUNJAB	104.37	101.93	101.38	104.89	110.00
15	RAJASTHAN	1.50	1.53	1.70	2.60	2.41
16	TAMIL NADU	50.62	52.20	66.11	62.27	52.01
17	UTTAR PRADESH	95.56	111.34	111.24	117.41	130.74
18	UTTARAKHAND	5.72	5.90	5.50	5.73	5.80
19	WEST BENGAL	148.85	145.11	147.45	146.68	155.54
20	OTHERS	24.69	19.10	25.00	24.50	25.37
	ALL INDIA TOTAL	831.31	917.93	933.55	964.31	991.54

\$ As per 4th Advance Estimates of DAC

(25)

TABLE NO. 8.9
DISTRICT-WISE PROCUREMENT OF PADDY IN ORISSA

(Fig. in MT)

District	2005-2006			2006-2007			2007-2008			2008-2009			2009-2010 (As on 31.03.10)		
	Proc. of Paddy	Target in Rice	Delivery in Rice	Proc. of Paddy	Target in Rice	Delivery in Rice	Proc. of Paddy	Target in Rice	Delivery in Rice	Proc. of Paddy	Target in Rice	Delivery in Rice	Proc. of Paddy	Target in Rice	Delivery in Rice
Angul	33625	18500	17480	15173	18300	9697	17307	26500	11196	23770	21500	4832	23624	21500	3632
Balasore	152173	107300	83567	141650	114660	84624	159042	106000	105917	152476	120500	55726	70780	120500	2834
Baragarh	727773	469800	407716	713903	566600	474366	757394	492000	508214	444125	550000	212989	470902	550000	133745
Bhadrak	102879	94500	57886	100058	109410	63400	137278	91000	100314	117880	121000	30629	120788	121000	13883
Bolangir	192408	182900	126740	163287	77250	107009	186442	137000	123408	192223	153700	50087	274534	153700	41607
Boudh	15988	11300	8625	25646	18960	16168	27353	18000	16508	29469	19200	10371	51895	19200	6909
Cuttack	21571	25250	11905	19032	28300	11980	61911	33500	34634	34412	51400	12344	57721	51400	5900
Deogarh	11902	12000	5927	5941	5700	3463	11168	6000	7568	15196	11500	5131	21146	11500	2560
Dhenkanal	14414	11500	7854	23871	21800	15199	33508	28500	22567	41075	32600	15556	38295	32600	9108
Gajapati	5702	4500	3130	10301	6350	5688	26158	15500	16527	25129	21050	14268	22785	21050	12091
Ganjam	201566	150250	100209	200854	143500	116783	255117	172000	164402	243961	193000	82169	204681	193000	37594
Jagatsinghpur	12772	14500	7327	14731	16100	9551	19584	16000	12702	11903	37250	1315	14997	37250	650
Jajpur	20532	26250	12452	23890	30500	15642	63432	31800	42487	47073	52200	16125	49843	52200	13980
Jharsuguda	27293	22740	15294	33305	28750	21929	30241	27000	20535	44438	31500	13178	42298	31500	8100
Kalahandi	432320	284420	222580	405152	316400	250727	423285	290000	284670	333074	260000	145162	284230	260000	57865
Kandhamal	353	750	233	631	800	416	531	1200	356	2596	3200	1486	2839	3200	
Kendrapada	16023	14500	7908	11186	17800	6677	17273	20500	11002	14408	45250	7000	45715	45250	13270
Keonjhar	14644	14850	8069	17922	18330	11329	24365	21500	15633	47443	22000	14881	44160	22000	7618
Khurda	37244	30650	20048	47380	47600	31220	80356	48500	54404	77152	82000	23225	61431	82000	5944
Koraput	103120	61290	54687	116132	73650	71997	116747	72000	76024	83213	77000	44053	98469	77000	37804
Malkangiri	55432	31190	27992	49118	34220	26526	61844	22500	40561	64961	46500	19717	58554	46500	12340
Mayurbhanj	61941	38200	31685	54486	38100	30133	63701	39000	41193	55429	55000	15228	54212	55000	9224
Nayagarh	38045	25900	22572	61094	37890	34998	63509	34000	39518	38594	62600	13254	33089	44850	5620
Nowrangpur	57801	36660	29181	35659	39300	23387	57266	35000	38780	58266	44850	21358	86871	62600	23278
Nuapada	114495	89160	65432	146998	114650	93381	170637	98000	114999	124972	135000	47132	119903	135000	17352
Puri	26087	16950	15282	32495	33350	20168	45672	40000	30622	23769	69050	9672	25250	69050	4790
Rayagada	33932	19190	18004	53901	40400	30921	84392	36500	54275	82733	58800	39536	92476	58800	37823
Sambalpur	416538	298300	233090	327899	299100	211245	341070	230000	221908	296812	196700	104774	242697	196700	65293
Sonepur	203722	136940	111076	243525	173700	153377	254890	151500	170258	183158	184500	58667	153390	184500	31388
Sundargarh	49612	34660	31931	28475	20360	18794	43847	31000	28847	71435	42000	21296	56193	42000	7640
TOTAL	32,01,907	22,84,900	17,65,882	31,23,695	24,91,830	19,70,795	36,35,320	23,72,000	24,10,029	29,81,145	28,00,850	11,11,161	29,23,768	28,00,850	629842

Source : P & L Section

TABLE NO. 8.10
State wise procurement of rice during the last five years
(in lakh tonnes)

Sl.No.	State/Uts	2004-05	2005-06	2006-07	2007-08	2008-09\$
1	A & N ISLANDS	0.01				
2	ANDHRA PRADESH	39.06	49.71	53.28	74.17	83.52
3	ARUNACHAL PRADESH					
4	ASSAM		0.01			0.03
5	BIHAR	3.43	5.24	4.76	5.12	10.58
6	CHANDIGARH	0.19	0.13	0.10	0.09	0.10
7	CHHATISHGARH	28.37	32.65	28.65	27.43	26.63
8	DELHI					
9	GUJARAT				0.19	
10	HARYANA	16.62	20.54	17.77	15.72	14.25
11	HIMANCHAL PRADESH	0.02				
12	JAMMU & KASHMIR	0.01	0.03			0.06
13	JHARKHAND	0.01	0.02	0.05	0.19	1.35
14	KARNATAKA	0.21	0.48	0.22	0.18	1.07
15	KERALA	0.33	0.94	1.51	1.68	2.37
16	MADHYA PRADESH	0.42	1.36	0.74	0.69	2.12
17	MAHARASHTRA	2.05	1.94	0.97	1.60	2.55
18	NAGALAND	0.11				
19	ORISSA	15.90	17.85	20.02	23.38	27.20
20	PONDICHERY			0.07	0.06	0.07
21	PUNJAB	91.06	88.55	78.29	79.08	85.51
22	RAJASTHAN	0.22	0.23	0.10	0.19	0.11
23	TAMIL NADU	6.52	9.26	10.77	9.68	11.53
24	UTTAR PRADESH	29.71	31.51	25.59	28.91	36.12
25	UTTARANCHAL	3.16	3.36	1.76	1.47	3.49
26	WEST BENGAL	9.44	12.75	6.42	15.08	15.32
	ALL INDIA TOTAL	246.85	276.56	251.07	284.91	323.98

\$ As on 11.08.2009

TABLE NO. 9.1
SUPPORT PRICE OF PADDY SINCE 1970-71

(Rs.per Qtl.)

Year	PADDY	
	COMMON	FINE
1970-71	48.00	57.00
1971-72	53.00	57.00
1972-73	55.00	59.00
1973-74	70.00	72.00
1974-75	74.00	78.00
1975-76	74.00	78.00
1976-77	74.00	78.00
1977-78	77.00	81.00
1978-79	85.00	89.00
1979-80	95.00	99.00
1980-81	105.00	109.00
1981-82	115.00	119.00
1982-83	122.00	126.00
1983-84	132.00	136.00
1984-85	137.00	141.00
1985-86	142.00	146.00
1986-87	146.00	150.00
1987-88	150.00	154.00
wef 1.05.88	160.00	170.00
1988-89	160.00	170.00
1989-90	185.00	195.00
1990-91	205.00	215.00
1991-92	230.00	240.00
1992-93	270.00	280.00
1993-94	310.00	330.00
1994-95	340.00	360.00
1995-96	360.00	375.00
1996-97	380.00	395.00
1997-98	415.00	435.00
Year	PADDY	
	COMMON	GRADE - A
1997-98	415.00	445.00
1998-99	440.00	470.00
1999-2000	490.00	520.00
2000-2001	510.00	540.00
2001-2002	530.00	560.00
2002-2003 *	530.00	560.00
2003-2004	550.00	580.00
2003-04(URS)	528.00 **	557.00 **
2004-2005	560.00	590.00
2004-05(URS)	538.00	566.00
2005-2006	570.00	600.00
2005-06(URS)	547.00	576.00
2006-2007#	580.00	610.00
2006-07(URS)	557.00	586.00
2007-2008\$	645.00	675.00
2008-2009^	850.00	880.00
2009-2010!	950.00	980.00

* Rs. 20/- extra as special drought relief up to 31.03.2003

** Under relaxed specification # Rs.40/- Bonus per Qtl.in KMY2006-07

\$ Rs.100/- per Qtl. in KMY 2007-08 ^ Rs.50/- per Qtl. in KMY2008-09

! Rs.50/- per Qtl. In KMY 2009-10

TABLE NO. 9.2
MINIMUM SUPPORT PRICE OF AGRICULTURAL COMMODITIES
AS FIXED BY GOVT. OF INDIA

Rs/per Qtl.

Commodity	Variety	2002-2003	2003-2004	2004-2005	2005-2006	2006-2007	2007-2008	2008-2009	2009-2010	Remark
PADDY	COMMON	530.00	550.00	560.00	570.00	580.00	645.00	850.00	1,000.00	Khariff (Oct - Sep)
	GRADE-A	560.00	580.00	590.00	600.00	610.00	675.00	880.00	1,030.00	Khariff (Oct - Sep)
WHEAT	F.A.Q	620.00	630.00	640.00	650.00	750.00	1,000.00	1,000.00	1,100.00	Rabi (Apr - Mar)
JOWAR	F.A.Q	485.00	505.00	515.00	525.00	540.00	600.00	840.00	860.00	Khariff (Oct - Sep)
BAJRA	F.A.Q	485.00	505.00	515.00	525.00	540.00	600.00	840.00	840.00	Khariff (Oct - Sep)
MAIZE	F.A.Q	485.00	505.00	525.00	540.00	540.00	620.00	840.00	840.00	Khariff (Oct - Sep)
RAGI	F.A.Q	485.00	505.00	515.00	525.00	540.00	600.00	915.00	915.00	Khariff (Oct - Sep)
ARHAR	F.A.Q	1320.00	1370.00	1390.00	1400.00	1410.00	1,550.00	2,000.00	2,300.00	Khariff (Oct - Sep)
MUNG	F.A.Q	1330.00	1370.00	1410.00	1520.00	1520.00	1,700.00	2,520.00	2,760.00	Khariff (Oct - Sep)
URAD	F.A.Q	1330.00	1370.00	1410.00	1520.00	1520.00	1,700.00	2,520.00	2,520.00	Khariff (Oct - Sep)
GRAM	F.A.Q	1200.00	1400.00	1425.00	1435.00	1445.00	1,600.00	1,730.00	1,760.00	Rabi (Apr - Mar)
MUSTARD / RAPESEED	F.A.Q	1300.00	1600.00	1700.00	1715.00	1715.00	1,800.00	1,830.00	1,830.00	Rabi (Apr - Mar)
G.NUT(SHELL)	F.A.Q	1355.00	1400.00	1500.00	1520.00	1520.00	1,550.00	2,100.00	2,100.00	Khariff (Oct - Sep)
NIGER SEED	F.A.Q	1120.00	1155.00	1180.00	1200.00	1220.00	1,240.00	2,405.00	2,405.00	Khariff (Oct - Sep)
SESAMUM	F.A.Q	1450.00	1485.00	1500.00	1550.00	1560.00	1,580.00	2,750.00	2,850.00	Khariff (Oct - Sep)
SUNFLOWER	F.A.Q	1195.00	1250.00	1340.00	1500.00	1500.00	1,510.00	2,215.00	2,215.00	Khariff (Oct - Sep)
SOYABEAN	BLACK	795.00	840.00	900.00	900.00	900.00	910.00	1,350.00	1,350.00	Khariff (Oct - Sep)
	YELLOW	885.00	930.00	1000.00	1010.00	1020.00	1,050.00	1,390.00	1,390.00	Khariff (Oct - Sep)
COTTON	MSL	1675.00	1725.00	1760.00	1760.00	1770.00	1,800.00	2,500.00	2,500.00	Khariff (Oct - Sep)
	LSL	1675.00	1725.00	1760.00	1760.00	1770.00	2,030.00	3,000.00	3,000.00	Khariff (Oct - Sep)

Source:-Ministry of Agriculture,GOI.

MSP of Paddy for 2009-10 is Rs.950+50 for Common and Rs. 980+50 for Gr.A.

TABLE NO. 9.3

PROCUREMENT PRICE, ISSUE PRICE & CONSUMER PRICE OF LEVY RICE, WHEAT, SUGAR AND KEROSENE
(Rs. per quintal)

Year (OCT - SEP)	PROCUREMENT PRICE OF RICE			
	Raw Rice		Boiled Rice	
	Common	Gr. A	Common	Gr. A
2000-2001	869.00	917.00	870.60	917.90
2001-2002	903.10	951.10	899.50	946.80
2002-2003	938.30	986.30	924.70	972.00
2003-2004	965.70	1013.70	952.10	999.10
2004-2005	965.70	1013.70	962.10	999.40
2005-2006	965.70	1013.70	965.30	1011.60
2006-2007	1041.20	1088.30	1041.80	1088.20
2007-2008	1199.30	1245.00	1196.90	1241.90
2008-2009	1440.60	1486.30	1434.70	1479.70
2009-2010	1606.60	1652.20	1598.40	1643.40
	CUSTOM MILLED PRICE OF RICE			
2004-2005(FAQ)	1052.37	1102.11	1036.91	1085.48
2004-2005(URS)	1045.28	1093.14	1029.79	1076.50
2005-2006(FAQ)	1036.29	1084.47	1028.21	1075.24
2005-2006(URS)	1066.00	1115.56	1057.70	1106.07
2006-2007(FAQ)	1155.06	1204.83	1145.23	1193.83
2006-2007(URS)	1149.19	1198.80	1139.50	1187.93
2007-2008(FAQ)	1291.62	1339.99	1278.76	1325.98
2007-2008(URS)	1312.93	1360.87	1298.84	1346.63
2008-2009(FAQ)	1589.41	1638.21	1569.15	1616.80
2008-2009(URS)	1687.86	1738.17	1666.87	1717.98
2009-2010(FAQ)	1784.32	1833.57	1759.92	1808.01
2009-2010(URS)	1776.40	1824.88	1752.59	1799.90
	DECENTRALISED PROCUREMENT (DCP) PRICE			
2006-2007(FAQ)	1248.35	1300.38	1238.04	1288.86
2006-2007(URS)	1242.18	1294.04	1232.02	1282.65
2007-2008(FAQ)	1427.50	1478.35	1413.32	1462.99
2007-2008(URS)	1417.87	1468.24	1403.91	1453.10
2008-2009(FAQ)	1710.14	1761.41	1688.76	1738.80
2008-2009(URS)	1687.86	1738.17	1666.87	1715.98
2009-2010(FAQ)	1809.30	1858.77	1784.69	1833.00
2009-2010(URS)	1894.85	1945.83	1869.60	1919.38
Commodities	Central Issue Price (Rs.)	Consumers' Price (Rs. per kg.)	With effect from /Year	
Rice Common APL	905.00	10.05	1999-2000	
	905.00	10.05	2000-2001	
	830.00	9.25	21.07.2001	
	730.00	8.20	01.04.2002	
	730.00	8.23	03.05.2002	
Rice Gr. A APL	830.00	9.30	01.07.2002	
	1180.00	12.90	1999-2000	
	1180.00	12.90	2000-2001	
	1130.00	12.40	01.08.2000	
	1130.00	12.45	14.02.2001	
Rice Common / Grade A BPL	350.00	2.00/4.00	1999-2000	
	590.00	5.00/6.50	2000-01 (up to 14.2.01)	
	565.00	6.30	14.02.2001 for 171 Non-ITDP Block	
	-	4.75	14.02.2001 for 143 ITDP Block	
ANTYODAYA Rice		2.00	02.08.2008	
		2.00	02.08.2008	
	699.00	7.80	16.01.2000	
	900.00	9.95	01.04.2000	
	830.00	9.20	01.08.2000	
	830.00	9.25	14.02.2001	
	610.00	6.95	21.07.2001	
	510.00	5.85	01.04.2002	
	510.00	5.95	03.05.2002	
	610.00	7.00	01.07.2002	
BPL	450.00	5.20	1999-2000	
	450.00	5.20	01.04.2000	
	415.00	4.85	01.08.2000	
	415.00	4.90	14.02.2001	
	1258.38	13.00	1999-2000	
Sugar	1258.38	13.00	2000-2001	
	1296.40	13.50	01.03.2002	
Kerosene	1337.75	13.50	01.05.2002 onwards	
	-	3.03 - 3.20	1999-2000	
	-	5.75 - 7.50	2000-2001	
	-	8.61 - 9.82	2001-2002 onwards	

* Rs. 2/- Rice for 143 Blocks income <= 11,000/- per annum and Rs. 4/- Rice for 171 Non-ITDP Blocks with income <= 6000 per annum & to family above poverty line in 143 Blocks.

** Rice @ Rs.2.00 per Kg. is supplied to all BPL families, all APL families of KBK districts and to all Antyodaya card holders @ 25 Kg. and 35 Kg. respectively per month.

Source : E,C,F,S and P & L Section

TABLE NO. 9.4
**ISSUE PRICE OF RICE, WHEAT, SUGAR AND KEROSENE TO SAs, KEROSENE WHOLESALERS/ SUB-
 WHOLESALERS AND PD RETAILERS**

(Rs. per quintal)					
COMMODITIES	PARTICULARS	ISSUE PRICE TO STORAGE AGENTS	ISSUE PRICE TO PD RETAILERS	CONSUMER PRICE	OK
BPL RICE	Within 10 Kms. From SA depot	173.50	180.00	2.00	
	Beyond 10 Kms. From SA depot	168.50	175.00	2.00	
	For Retail points in inaccessible/hilly areas	163.50	170.00	2.00	
AAY RICE	Within 10 Kms. From SA depot	175.50	180.00	2.00	
	Beyond 10 Kms. From SA depot	170.50	175.00	2.00	
	For Retail points in inaccessible/hilly areas	165.50	170.00	2.00	
APL RICE	Within 10 Kms. From SA depot	903.86	912.00	9.30	
	Beyond 10 Kms. From SA depot	894.86	895.00	9.30	
	For Retail points in inaccessible/hilly areas	886.86	895.00	9.30	
SC / ST HOSTEL RICE	BULK CONSUMERS	193.50	—	—	
W I RICE		613.70	620.00		
APL WHEAT	Within 10 Kms. From SA depot	674.72	682.00	7.00	
	Beyond 10 Kms. From SA depot	665.75	673.00	7.00	
	For Retail points in inaccessible/hilly areas	657.75	665.00	7.00	
SUGAR	All over state	1329.38	1331.63	13.50	

**TABLE NO. 10.1
NUMBER OF FAIR PRICE SHOPS FUNCTIONING IN THE STATE**

CATEGORY	As on 31.05. 2008		TOTAL
	URBAN	RURAL	
PRIVATE	3633	13918	17551
CO-OPERATIVE	134	687	821
O.S.C.S.C. (Maitry)	43	11	54
Municipality/NAC	11	-	11
Grampanchayat	-	3236	3236
SHG	653	6996	7649
TOTAL	4474	24848	29322

CATEGORY	As on 31.03. 2009		TOTAL
	URBAN	RURAL	
PRIVATE	3499	14125	17624
CO-OPERATIVE	130	658	788
O.S.C.S.C. (Maitry)	38	14	52
Municipality/NAC	12	0	12
Grampanchayat		3466	3466
SHG	657	7346	8003
TOTAL	4336	25609	29945
CATEGORY	As on 31.03. 2010		TOTAL
	URBAN	RURAL	
Private	3357	13909	17266
Co-operatives	133	635	768
O.S.C.S.C. (Maitry)	40	14	54
Municipality/NAC	12	0	12
Grampanchayat		3532	3532
SHG	475	7325	7800
TOTAL	4017	25415	29432

Source : F.S. Section, F.S & C.W. Department.

**TABLE NO. 10.2
FAIR PRICE SHOPS AS ON MARCH 2010**

Sl. No.	District	URBAN		RURAL		Total	Co-operative			Mun/NAC	G.P	Maitry			Total Urban	Total Rural	Total
		Pvt.	SHG	Pvt.	SHG		Urban	Rural	Total	Urban	Rural	Urban	Rural	Total			
1	Angul	147	25	665	461	1298	6	13	19	3	209				181	1348	1529
2	Balasore	98		1243	39	1380	6	50	56		14	1		1	105	1346	1451
3	Bargarh	75	30	714	319	1138	1	18	19		186		1	1	106	1238	1344
4	Bhadrak	110	1	874	35	1020	3	2	5		121				114	1032	1146
5	Bolangir	181	3	1078	149	1411		2	2		270	4		4	188	1499	1687
6	Boudh	23		40	99	162	2	7	9		56				25	202	227
7	Cuttack	354		1096	37	1487	7	23	30		56		5	5	361	1217	1578
8	Deogarh	20		177	43	240		3	3		60				20	283	303
9	Dhenkanal	7	107	38	797	949	2	8	10		21				116	864	980
10	Gajpati	43		259	172	474		7	7		61				43	499	542
11	Ganjam	390		948	58	1396	5	61	66	1	475				396	1542	1938
12	Jagatsinghpur	80		639	178	897	4	12	16	1	132				85	961	1046
13	Jajpur	94	12	963	84	1153		23	23		8				106	1078	1184
14	Jharsuguda	80	6	75	77	238	4		4		78				90	230	320
15	Kalahandi	65	10	83	732	890	3		3		266				78	1081	1159
16	Kandhamal	13	12	90	207	322	3	52	55		131		3	3	28	483	511
17	Kendrapada	90	3	674	28	795	3	56	59						96	758	854
18	Keonjhar	162	2	128	221	513	3	9	12		203	2		2	169	561	730
19	Khurda	191	42	523	58	814	8	17	25		21	5		5	246	619	865
20	Koraput	159	31	300	814	1304	13	8	21		151				203	1273	1476
21	Malkangiri	4	27	2	376	409			0	2	108				33	486	519
22	Mayurbhanj	88	38	860	834	1820	6	161	167		149	21		21	153	2004	2157
23	Nawarangpur	45	5	13	447	510	2	35	37		91				52	586	638
24	Nayagarh	36	6	520	29	591	1	31	32		11	1	5	6	44	596	640
25	Nuapada	29	74	51	169	323	1	4	5		83	1		1	105	307	412
26	Puri	114		738	20	872		21	21		33				114	812	926
27	Rayagada	18	2	20	177	217	20	2	22	4	157	2		2	46	356	402
28	Sambalpur	244	10	264	361	879	10	1	11	1	65	2		2	267	691	958
29	Sonepur	40	2	4	124	170	1	9	10		61				43	198	241
30	Sundargarh	357	27	830	180	1394	19		19		255	1		1	404	1265	1669
	TOTAL :	3357	475	13909	7325	25066	133	635	768	12	3532	40	14	54	4017	25415	29432

TABLE NO.10.3
DISTRICTWISE NO. OF RATION CARDS (MARCH, 2010)

Sl. No.	Name of the District	BPL Cards	AAY Cards	APL Cards	TOTAL	AY Card
1	Angul	97232	29750	96463	223445	1967
2	Balasore	180801	82508	139654	402963	3472
3	Bargarh	133030	49679	132795	315504	2471
4	Bhadrak	106909	46080	125099	278088	2263
5	Bolangir	165238	52959	150456	368653	2519
6	Boudh	58382	17186	24794	100362	650
7	Cuttack	170770	48860	311966	531596	4038
8	Deogarh	34044	12922	8930	55896	480
9	Dhenkanal	98002	35174	81447	214623	1940
10	Gajpati	57633	20168	47896	125697	932
11	Ganjam	270657	79442	289606	639705	5534
12	Jagatsinghpur	70493	24908	204375	299776	2076
13	Jajpur	151247	45335	131809	328391	2837
14	Jharsuguda	35212	8328	83397	126937	914
15	Kalahandi	150236	54194	106748	311178	2315
16	Kandhamal	91415	29256	29459	150130	1118
17	Kendrapada	108888	36536	197900	343324	2353
18	Keonjhar	182893	59835	115602	358330	2736
19	Khurda	122967	39017	266204	428188	3074
20	Koraput	182072	64305	77242	323619	2108
21	Malkangiri	75744	23870	35231	134845	864
22	Mayurbhanj	290123	99336	166557	556016	3857
23	Nawarangpur	112265	51539	42206	206010	1733
24	Nayagarh	108232	30049	94973	233254	1602
25	Nuapada	84458	26581	34067	145106	961
26	Puri	146762	41823	119539	308124	2672
27	Rayagada	104047	43336	53795	201178	1461
28	Sambalpur	94034	28292	133070	255396	1656
29	Sonepur	59500	25227	50063	134790	976
30	Sundargarh	169470	47095	233370	449935	3221
	Total	3712756	1253590	3584713	8551059	64800

Source: Food Security Section

TABLE NO. 11.1

MONTHWISE ALLOTMENT, LIFTING AND OFFTAKE OF ESSENTIAL COMMODITIES IN THE STATE DURING 2008 - 09

Month	RICE (in M.T)			APL WHEAT(in MT)			LEVY SUGAR (in M.T)			KEROSENE (in KLs)	
	Allotment	Lifting	Offtake	Allotment	Lifting	Offtake	Allotment	Lifting	Offtake	Allotment	Lifting
April	1,44,018.000	1,31,632.730	1,20,855.200	7,793.000	6,117.367	5,848.027	7,680.000	2,094.193	1,208.534	33,720	33,684
May	1,44,018.000	1,48,420.210	1,51,817.280	7,793.000	9,136.667	9,463.766		1,628.365	2,255.049	33,720	33,660
June	1,44,018.000	1,46,253.660	1,41,958.850	7,793.000	7,612.086	7,817.378	9,971.200	3,577.555	2,947.604	33,744	33,588
July	1,44,018.000	1,40,912.660	1,63,042.560	12,793.000	12,028.357	11,964.630		822.898	1,676.774	33,720	33,681
August	1,57,996.500	1,56,393.910	1,48,634.170	12,793.000	11,763.907	10,413.468		3,353.091	1,507.522	33,720	33,564
September	1,57,996.510	1,56,166.990	1,59,291.150	12,793.000	12,299.877	11,810.628	11,166.000	8,689.324	3,581.686	33,720	34,300
October	1,58,017.150	1,53,682.440	1,18,538.480	12,793.000	11,688.897	11,694.897	8,064.000	2,670.600	3,727.435	33,720	33,151
November	1,58,285.360	1,54,010.350	1,50,771.240	12,793.000	11,859.016	11,053.460	8,064.000	2,486.702	1,805.151	33,720	33,720
December	1,58,767.430	1,56,924.620	1,58,440.380	12,793.000	12,100.367	12,597.716	8,064.000	4,189.255	3,922.284	33,720	41,364
January	1,58,767.430	1,53,072.010	1,54,836.430	12,793.000	11,851.533	11,689.789	9,710.900	3,086.899	2,922.991	33,720	33,722
February	1,58,767.430	1,56,288.890	1,56,803.200	12,793.000	8,769.622	9,837.697	10,852.000	3,503.493	2,856.972	33,722	33,718
March	1,58,767.430	1,57,037.870	1,62,388.260	32,735.000	9,978.288	11,028.004	8,064.000	2,165.090	4,075.386	33,720	33,720
TOTAL	18,43,437.240	18,10,796.340	17,87,377.200	1,35,079.000	1,25,205.984	1,25,219.460	81,636.100	38,267.465	32,487.388	4,04,666	4,11,872

Source : OSCSC Ltd., E.C. Section and F S Section

TABLE NO. 11.2

MONTHWISE ALLOTMENT, LIFTING AND OFFTAKE OF ESSENTIAL COMMODITIES IN THE STATE DURING 2009-10

(36)

Month	RICE (in M.T)			APL WHEAT(in MT)			LEVY SUGAR (in M.T)			KEROSENE (in KLs)	
	Allotment	Lifting	Offtake	Allotment	Lifting	Offtake	Allotment	Lifting	Offtake	Allotment	Lifting
April	1,60,714.64	1,54,248.12	1,56,981.61	32,735.00	29,514.34	19,700.79	7,375.50	3,288.92	2,481.00	33,720.00	33,622.00
May	1,60,714.64	1,53,916.09	1,56,236.87	32,735.00	30,282.39	29,982.95	8,733.30	3,203.48	3,761.22	33,720.00	33,481.00
June	1,60,714.64	1,55,957.37	1,53,451.02	32,735.00	29,066.00	28,008.11	10,752.00	5,101.13	5,146.93	33,720.00	33,718.00
July	1,60,714.64	1,61,241.12	1,60,174.67	32,735.00	29,448.28	32,334.11	9,265.50	5,591.45	4,654.20	33,588.00	33,458.00
August	1,60,259.66	1,56,544.76	1,58,273.56	32,735.00	29,330.45	28,621.73	8,064.00	5,147.41	5,346.45	33,588.00	33,248.00
September	1,60,259.66	1,57,673.79	1,57,104.35	32,735.00	31,497.51	35,087.10	10,752.00	7,834.80	8,056.10	33,588.00	33,648.00
October	1,60,228.31	1,53,438.09	1,52,088.54	32,735.00	30,784.54	30,833.71	7,586.80	3,975.50	2,696.40	33,660.00	33,534.00
November	1,60,228.31	1,58,326.67	1,58,780.15	32,735.00	31,280.39	30,521.41	8,741.10	4,954.75	3,796.79	33,660.00	33,316.00
December	1,60,226.61	1,57,713.96	1,56,486.36	32,735.00	31,388.50	32,621.77	8,737.30	8,022.26	8,699.42	33,660.00	33,653.00
January	1,60,226.61	1,55,401.92	1,56,237.09	32,735.00	31,388.50	32,621.77	8,737.30	2,686.50	4,436.71	33,660.00	33,060.00
February	1,60,226.61	1,56,825.65	1,58,081.50	32,735.00	30,941.27	31,212.91	10,752.00	6,159.62	3,157.54	33,660.00	33,628.00
March	1,60,226.61	1,56,825.68	1,58,081.50	32,735.00	31,144.69	30,874.74	8,064.00	10,404.45	3,157.54	33,660.00	33,568.00
TOTAL	19,24,740.89	18,78,113.20	18,81,977.21	3,92,820.00	3,66,066.86	3,62,421.10	1,07,560.80	66,370.27	55,390.30	4,03,884.00	4,01,934.00

Source : OSCSC Ltd., E.C. Section and F S Section

TABLE NO. 11.3
SCALE OF DISTRIBUTION OF PD ITEMS (Mar.09)

Target Groups :	
Rice	⇒ 12.645 lakhs Antyodaya Anna Yojana families supplied with rice at a specially subsidised price @ Rs. 2.00 a kg @ 35 kg. per month with effect from August 2008.
	⇒ 37.59 lakhs BPL families as per 1997 BPL survey and APL families of KBK Districts to receive: 25 kg of rice at a specially subsidised price @ Rs.2.00 a kg. ⇒ 15 kg. of rice to each ST/SC student of hostels run by ST SC Dev. Deptt. per month for 10 months a year. 10 kg of rice free of cost to 64,800 number of Annapurna beneficiaries.
Wheat	⇒ Up to 15 kg per APL card per month @ Rs.7.00 per kg. subject to availability.
Levy Sugar	⇒ 2 kg per BPL/AA Y card per month @ Rs.13.50 per kg.
Kerosene	⇒ 4 ltrs. per card per month irrespective of APL or BPL families.

TABLE NO. 11.4
District - wise P D S Outlets in the State

Name of District	No. of Storage Agents	No. of PD Retail Outlets	No. of SKO Wholesaler	No. of SKO Sub-Wholesaler
Angul	8	1529	3	13
Balasore	29	1451	12	53
Bargarh	26	1344	7	19
Bhadrak	28	1146	7	43
Bolangir	47	1687	6	53
Boudh	8	227	2	12
Cuttack	63	1578	16	70
Deogarh	8	303	1	9
Dhenkanal	22	980	4	22
Gajpati	9	542	5	18
Ganjam	61	1938	16	72
Jagatsinghpur	29	1046	9	67
Jajpur	39	1184	7	35
Jharsuguda	18	320	4	11
Kalahandi	31	1159	3	37
Kandhamal	17	511	2	20
Kendrapada	46	854	7	53
Keonjhar	41	730	5	62
Khurda	31	865	11	46
Koraput	24	1476	5	37
Malangiri	16	519	2	14
Mayurbhanj	56	2157	10	47
Nawarangpur	21	638	3	23
Nayagarh	8	640	5	49
Nuapada	8	412	2	16
Puri	36	926	8	46
Rayagada	16	402	3	21
Sambalpur	20	958	10	22
Sonepur	16	241	3	12
Sundargarh	29	1669	11	37
TOTAL	811	29432	189	1039

Source: FS Section and OSCSC Ltd.

TABLE NO. 11.5
Additional commodities being distributed through TPDS outlets other than Wheat, Rice, Coarsegrain, Sugar & Kerosene Oil on subsidized rates (as reported by respective State/UT governments)

Sl. No	State/UT	Name of the commodity	Additional commodities at subsidized rates
			OK
		(As on 29.07.2009)	
1	Andhra Pradesh	1 Enriched Wheat floor	Rs. 10/- per kg
		2 Iodized Salt (GM)	Rs. 4/- per kg
		3 Red Gram Dal	Rs. 30/- per kg
		4 Tamarind	Rs. 30/- per kg
		5 P.Oil	Rs. 30/- per kg
		6 Black Gram Dal	Rs. 45/- per kg
		7 Green Gram Dal	Rs. 43/- per kg
			Rs. 42/- per kg
		8 Palmolein Oil	Rs. 45/-
2	Assam	1 Iodised Salt under State Zonal Quota	Rs. 4.70/- per kg (powder packet)
		2 - do -	Rs. 3.50/- per kg (crushed)
3	Chhatisgarh	Iodised Amrit Salt	25 paise pe3r kg for BPL, AAY & ANP families
4	Gujarat	1 Iodized Salt	1. Iodized Sale - Rs. 0.50 per kg
		2 Edible Oil	2. Edible Oil-Lower price than the open market price
5	Himachal Pradesh	1 Dal Malka	Rs. 20/- per kg
		2 Dal Channa	Rs. 25/- per kg
		3 Urad Sabut	Rs. 25/- per kg
		4 Mustard Oil	Rs. 45/- per kg
		5 Refined Oil	Rs. 40/- per kg
		6 Iodized Salt	Rs. 4/- per kg
6	Jharkhand	Iodized Salt	2 kg for BPL family per month @ Rs. 0.25 per kg
7	Kerala	1 Green Gram	36.00
		2 UD Washed	49.00
		3 UD Split	47.00
			29.00
		4 BG Bold	27.00
		5 Lobia	29.00
		6 Toordhal	19.00
		7 Peasdhall	57.00
		8 Chillies	35.00
		9 Corriender	96.00
		10 Cuminseed	23.00
		11 Mustard	30.00
		12 Methi	75.00
		13 Sabari Tea	47.00

TABLE NO. 12.1
MONTH WISE AVERAGE WHOLESALE PRICES OF SOME ESSENTIAL COMMODITIES OF SELECTED MARKETS IN THE YEAR 2008 - 09

(Rs. per Qntl.)

Month	Rice(C)	Wheat	Atta	Maida	Suji	M.Dal	A.Dal	M.Oil	Palmoil	Vanaspati	Sugar	Gur	Salt	Potato	Onion
April	1218.89	1270.00	1348.00	1481.11	1565.88	3330.00	3643.78	6896.22	6083.50	6090.78	1616.11	1435.78	250.63	499.44	533.78
May	1224.44	1232.67	1270.11	1441.00	1532.55	3252.22	3624.00	7351.67	6455.67	6127.73	1630.56	1502.00	260.63	507.57	505.50
June	1242.22	1266.00	1375.78	1502.77	1595.58	3321.67	3661.89	8155.56	6672.56	6271.00	1626.67	1594.25	262.38	531.22	648.89
July	1285.50	1257.67	1369.11	1492.33	1618.55	3837.78	4157.56	8162.78	6554.56	6215.56	1704.44	1678.76	256.69	504.22	1041.09
August	1263.33	1260.00	1356.78	1490.77	1625.22	3957.78	4208.22	7819.89	5512.56	5136.89	2025.56	2051.25	263.63	438.78	1057.78
September	1288.89	1281.67	1371.22	1473.46	1619.77	4046.57	4326.00	7586.11	5281.11	4928.58	1905.56	2118.38	263.63	447.67	921.67
October	1296.67	1241.67	1312.33	1466.32	1615.17	4215.56	4533.11	7489.22	4668.33	4433.36	1903.33	2183.00	264.88	438.11	858.00
November	1300.00	1233.33	1322.67	1462.88	1603.77	4263.33	4443.33	7302.22	4329.89	4019.56	1916.67	2204.25	262.38	412.78	1572.22
December	1296.67	1210.00	1342.67	1477.22	1628.11	4224.44	4342.22	7471.11	4329.22	3770.11	2010.00	2126.25	275.50	415.56	1402.22
January	1296.67	1,210.00	1,368.22	1,521.11	1,660.55	4,293.33	4,488.89	7,375.11	4,286.44	3,780.11	2,057.78	2,157.50	275.25	470.11	1,696.67
February	1304.44	1,236.67	1,405.00	1,516.44	1,651.44	4,424.44	4,642.67	6,676.22	4,213.22	3,778.22	2,267.78	2,190.00	281.75	594.89	1,525.00
March	1323.33	1,251.67	1,405.78	1,505.88	1,603.11	4,438.89	4,627.78	6,370.44	4,327.67	3,830.11	2,263.33	2,262.25	283.75	822.12	1,083.33
Annual Avg.	1278.42	1,245.95	1,353.97	1,485.94	1,609.98	3,967.17	4,224.95	7,388.05	5,226.23	4,865.17	1,910.65	1,958.64	266.76	506.87	1,070.51

(40)

TABLE NO. 12.2
MONTH WISE AVERAGE WHOLESALE PRICES OF SOME ESSENTIAL COMMODITIES OF SELECTED MARKETS IN THE YEAR 2009-10

(Rs. per Qntl.)

Month	Rice(C)	Wheat	Atta	Maida	Suji	M.Dal	A.Dal	M.Oil	Palmoline	Vanaspati	Sugar	Gur	Salt	Potato	Onion
April	1328.89	1208.67	1387.78	1510.00	1621.33	4753.33	5117.11	6399.67	4957.33	4288.44	2526.67	2509.25	309.50	987.89	852.44
May	1315.56	1208.67	1345.78	1418.56	1559.11	4808.89	5256.89	6351.11	5031.78	4507.22	2440.56	2922.75	294.50	1028.89	828.33
June	1315.56	1206.87	1353.11	1396.33	1577.56	4975.56	5619.22	6027.22	4808.11	4462.67	2508.89	3064.63	294.50	1251.11	991.67
July	1337.78	1206.67	1324.22	1455.44	1617.22	5836.67	7194.44	6105.11	4539.22	4193.41	2573.33	3101.88	297.00	1312.22	1013.33
August	1346.67	1232.33	1413.33	1539.89	1694.11	5927.78	7142.44	6129.89	4820.11	4302.89	3040.00	3153.88	304.50	1355.00	916.67
September	1348.89	1234.67	1391.56	1597.00	1705.22	5985.56	6986.00	6025.89	4622.11	4153.44	3038.89	3245.10	304.50	1683.33	1108.89
October	1357.78	1333.67	1414.89	1606.78	1729.22	7613.33	7536.22	6120.56	4480.33	4172.89	3191.11	3252.38	304.50	1850.44	1835.56
November	1387.78	1322.00	1532.00	1724.00	1855.22	7968.89	7834.22	6312.44	4559.89	4230.00	3430.00	3175.75	304.50	1464.44	2261.11
December	1383.78	1382.00	1580.89	1811.89	1918.89	8030.00	7485.33	6549.67	4698.11	4328.67	3427.78	3208.25	304.50	1277.78	1874.44
January	1388.89	1392.00	1583.11	1811.00	1902.11	8046.67	7030.22	6505.00	4687.11	4306.78	3977.78	3265.75	304.50	548.89	1716.67
February	1366.57	1375.33	1607.56	1763.00	1843.56	7433.33	5935.56	6144.44	4703.78	4265.78	3651.11	3208.00	304.50	384.44	1222.22
March	1402.22	1352.00	1588.78	1719.11	1810.78	7538.89	5803.56	6218.33	4801.56	4395.00	3281.11	3048.50	304.50	353.33	877.78
Annual Avg.	1356.70	1287.91	1460.25	1612.75	1736.19	6576.58	6578.43	6240.78	4725.79	4300.60	3090.60	3096.34	302.63	1124.81	1291.59

TABLE NO. 12.3
MONTH WISE AVERAGE RETAIL PRICES OF SOME ESSENTIAL COMMODITIES OF SELECTED MARKETS IN THE
YEAR 2008 - 09

(Rs. per kg.)

Month	Rice(C)	Wheat	Atta	Maida	Suji	M.Dal	A.Dal	M.Oil	P.Oil	Vana.	Sugar	Gur	Salt	Potato	Onion
April	13.00	13.75	14.89	16.27	17.33	35.44	38.44	71.89	63.44	62.89	17.50	16.44	3.44	6.56	7.11
May	13.06	13.50	14.28	16.00	16.88	34.56	38.33	75.56	66.33	63.33	17.81	16.67	3.61	6.83	7.00
June	13.33	13.70	15.22	16.44	17.33	35.11	40.67	83.78	69.00	65.11	17.50	17.78	3.72	6.94	8.39
July	13.67	13.80	15.22	16.55	17.66	41.30	41.55	82.78	67.00	63.78	18.44	19.00	3.70	8.78	12.24
August	13.44	13.80	15.22	16.55	17.83	41.67	44.11	80.78	57.00	53.67	21.81	22.18	3.83	6.26	12.67
September	13.67	13.80	15.44	16.38	17.77	42.44	45.22	77.56	54.11	51.89	20.17	23.22	3.72	6.11	10.89
October	13.78	13.80	14.78	16.33	17.88	44.11	47.22	76.56	46.33	46.33	20.33	23.78	3.83	5.67	11.00
November	13.83	13.60	14.78	16.22	17.66	44.33	46.33	75.22	44.44	41.67	20.44	24.00	3.78	6.11	18.00
December	13.78	13.60	14.72	16.44	17.72	43.89	45.22	76.58	44.67	39.78	21.61	23.58	3.80	5.78	16.00
January	13.78	13.60	14.67	16.72	18.11	44.67	46.78	75.78	44.22	40.00	22.17	23.89	3.89	6.11	19.78
February	13.89	13.60	15.61	16.77	18.16	45.33	48.33	70.11	43.67	40.00	23.94	24.22	3.94	7.67	17.33
March	14.17	13.80	15.50	16.55	18.00	46.33	48.33	65.22	45.00	40.44	23.89	24.67	3.94	9.78	12.78
Annual Avg.	13.62	13.70	15.03	16.44	17.69	41.60	44.21	75.99	53.77	50.74	20.47	21.62	3.77	6.88	12.77

(42)

TABLE NO. 12.4
MONTH WISE AVERAGE RETAIL PRICES OF SOME ESSENTIAL COMMODITIES OF SELECTED MARKETS IN THE
YEAR 2009-10

(Rs. per kg.)

Month	Rice(C)	Wheat	Atta	Maida	Suji	M.Dal	A.Dal	M.Oil	P.Oil	Vana.	Sugar	Gur	Salt	Potato	Onion
April	14.17	13.80	15.39	16.78	18.00	46.33	48.56	65.44	45.44	45.00	23.89	28.33	3.94	10.11	12.56
May	14.00	12.90	14.56	16.22	17.67	50.44	55.11	65.67	52.11	47.33	26.89	31.67	3.94	12.33	10.22
June	14.11	13.10	14.67	16.22	17.78	52.00	60.78	62.33	50.22	46.33	26.56	33.44	3.94	15.00	12.11
July	14.33	12.90	15.67	16.33	17.89	60.78	78.76	62.00	46.89	44.00	27.33	33.89	4.11	15.22	12.33
August	14.44	13.20	15.33	16.89	18.67	61.89	74.44	62.44	50.00	45.33	32.00	34.33	4.22	17.87	12.33
September	14.44	13.80	15.56	17.56	18.78	62.44	72.78	62.22	48.00	44.22	31.89	35.00	4.33	19.11	13.11
October	14.56	13.80	15.67	17.78	19.00	78.89	77.78	63.56	47.11	44.22	33.56	35.00	4.33	21.33	21.00
November	14.89	15.25	17.33	18.89	20.22	82.67	80.87	65.44	47.78	44.67	36.33	34.00	4.33	17.44	22.11
December	15.00	16.00	18.22	19.89	21.00	83.00	77.00	68.33	49.33	45.56	36.00	34.22	4.33	14.89	21.33
January	15.00	16.00	18.33	19.89	21.00	83.00	72.78	67.11	49.11	45.44	42.00	36.33	4.33	7.33	18.89
February	14.78	15.75	17.89	19.00	20.33	76.44	61.89	63.56	49.22	45.00	38.44	34.78	4.39	5.33	17.22
March	15.22	15.25	17.44	18.89	20.00	77.78	60.44	62.78	50.33	46.44	34.67	32.89	4.41	5.00	11.22
Annual Avg.	14.58	14.31	16.34	17.86	19.20	67.97	68.43	64.24	48.80	45.30	32.46	33.66	4.22	13.41	15.37

(43)

TABLE NO. 12.5

Ministry of Consumer Affairs, Food and Public Distribution

Department of Consumer Affairs

(Price Monitoring Cell)

Daily Retail Prices of Essential Commodities

Date:31/03/2010

(Rs. per Kg.)

Centre	Rice	Wheat	Atta	Gram dal	Tur dal	Sugar	Groundnut Oil	Mus.oil	Vanaspati	Tea Loose	Milk	Potato	Onion	Salt Loose
NORTH ZONE														
DELHI	23.00	16.00	16.50	33.00	68.00	62.50	78.00	55.00	35.00	23.00	115.00	66.00	55.00	156.00
SHIMLA	26.00	15.00	19.00	33.00	70.00	65.00	90.00	NR	37.00	20.00	87.00	73.00	52.00	150.00
SRINAGAR	NR	NR	NR	NR	NR	NR	NR	NR	NR	NR	NR	NR	NR	NR
JAMMU	24.00	13.00	15.00	32.00	65.00	NR	NR	NR	38.00	22.00	91.00	74.00	52.00	292.00
AMRITSAR	NR	NR	NR	NR	NR	NR	NR	NR	NR	NR	NR	NR	NR	NR
LUDHIANA	NR	NR	NR	NR	NR	NR	NR	NR	NR	NR	NR	NR	NR	NR
LUCKNOW	16.00	12.00	15.00	30.00	58.00	60.00	73.00	48.00	34.00	30.00	95.00	62.00	45.00	160.00
DEHRADUN	NR	NR	NR	NR	NR	NR	NR	NR	NR	NR	NR	NR	NR	NR
KANPUR	NA	NA	NA	NA	NA	NA	NA	NA	NA	NA	NA	NA	NA	NA
WEST ZONE														
MUMBAI	20.00	19.00	19.00	34.00	64.00	68.00	86.00	53.00	35.00	24.00	71.00	66.00	50.00	149.00
AHMEDABAD	17.00	13.00	16.00	24.00	62.00	65.00	81.00	49.00	33.00	26.00	74.00	51.00	48.00	180.00
RAJKOT	NA	NA	NA	NA	NA	NA	NA	NA	NA	NA	NA	NA	NA	NA
BHOPAL	17.00	12.00	16.50	28.00	48.00	52.00	68.00	50.00	34.00	26.00	75.00	55.00	50.00	150.00
RAIPUR	19.00	15.00	19.00	30.00	60.00	58.00	82.00	45.00	34.00	23.00	84.00	65.00	50.00	170.00
JAIPUR	22.00	13.00	15.00	28.00	64.00	59.00	77.00	47.00	34.00	21.00	78.00	54.00	43.00	120.00
EAST ZONE														
KOLKATA	18.00	NR	16.00	34.00	62.00	60.00	85.00	52.00	37.00	22.00	90.00	60.00	38.00	100.00
RANCHI	NR	NR	NR	NR	NR	NR	NR	NR	NR	NR	NR	NR	NR	NR
BHUBANESHWAR	15.00	14.00	17.00	30.00	62.00	54.00	80.00	47.00	33.00	22.00	NR	60.00	46.00	180.00
PATNA	NR	NR	NR	NR	NR	NR	NR	NR	NR	NR	NR	NR	NR	NR
NORTH-EAST ZONE														

(A)

TABLE NO. 12.6
MONTHWISE SALE OF PETROL AND DIESEL IN ORISSA

(Fig. In MT)

Month	2007-08		2008-09		2009-10	
	Petrol	Diesel	Petrol	Diesel	Petrol	Diesel
April	16314	77686	19385	93016	22224	94088
May	18506	88078	22490	101587	23327	104623
June	16940	81194	14936	79863	23494	108705
July	17090	76309	18088	87080	20724	96618
August	14977	66542	16686	72010	21304	87211
September	14938	58080	17469	69965	22363	80545
October	17366	74443	19241	72480	23712	94286
November	16690	80453	18416	78709	21878	98136
December	17306	90962	18853	96348	23193	115553
January	17969	93418	20439	102540	23379	111973
February	16462	92827	21096	100783	24184	112567
March	20001	98856	24392	107828	26890	117203
TOTAL	204559	978848	231491	1062209	276672	1221508

Source : SLC, IOC, Bhubaneswar

TABLE NO. 12.7

PRICE OF DIESEL, PETROL, L.P.G. & KEROSENE IN THE STATE

(Rs. Per litre)

	2007-08		2008-09		2009-10	
	Minimum	Maximum	Minimum	Maximum	Minimum	Maximum
Diesel	33.58	34.73	33.21	37.75	32.80	38.59
Petrol	44.52	46.57	41.09	51.16	40.75	48.33
L.P.G.(Cyl.)	307.08	308.79	307.60	362.17	326.50	343.00
Kerosene	9.41	9.51	9.37	9.47	9.17	9.98

TABLE NO.12.8
MONTHLY WHOLESALE PRICE INDEX OF SELECTED COMMODITIES
BASE YEAR 1993-94=100

RICE Weight = 2.44907

Month/ Year	Jan	Feb	Mar	Apr	May	Jun	Jul	Aug	Sep	Oct	Nov	Dec
2010	253.3	252.5	250.8	251.6	251.3							
2009	225.2	230.5	232.2	231.3	233.8	235.8	237.4	238.8	244.8	245.6	248.0	251.7
2008	195.5	196.8	198.9	201.7	200.8	200.7	203.1	203.2	203.0	214.9	218.5	222.2
2007	181.1	181.9	183.7	185.5	186.0	186.5	188.4	190.6	192.6	193.2	194.1	193.1

WHEAT Weight=1.38408

Month/ Year	Jan	Feb	Mar	Apr	May	Jun	Jul	Aug	Sep	Oct	Nov	Dec
2010	289.7	288.9	279.4	269.9	261.1							
2009	243.6	246.8	244.2	246.8	249.9	249.0	248.6	247.6	253.4	260.7	279.7	288.1
2008	231.4	232.6	233.4	233.4	232.6	233.8	240.8	239.9	241.7	238.5	239.3	240.9
2007	234.5	232.1	224.5	218.5	217.0	217.1	222.6	224.3	224.2	227.1	230.2	229.8

ARHAR Weight=0.13466

Month/ Year	Jan	Feb	Mar	Apr	May	Jun	Jul	Aug	Sep	Oct	Nov	Dec
2010	402.2	363.5	353.2	358.0	364.4							
2009	228.6	251.2	253.8	267.8	280.7	292.4	337.1	355.6	354.1	355.6	409.9	417.4
2008	219.0	212.3	218.5	216.5	213.4	216.1	223.6	226.6	228.8	227.3	228.5	227.5
2007	185.6	191.7	189.6	194.0	195.4	196.0	204.8	211.8	206.1	208.1	210.5	212.4

MUNG Weight=0.11225

Month/ Year	Jan	Feb	Mar	Apr	May	Jun	Jul	Aug	Sep	Oct	Nov	Dec
2010	519.5	514.5	514.0	538.4	554.8							
2009	298.1	305.4	307.4	313.9	320.8	340.6	369.2	375.7	380.5	417.0	477.9	501.6
2008	245.3	247.8	256.0	256.6	253.5	253.3	271.0	298.7	298.8	295.1	306.2	296.2
2007	306.0	309.5	307.8	309.5	302.4	291.9	282.7	267.2	256.0	251.7	251.3	245.4

GRAM Weight=0.22365

Month/ Year	Jan	Feb	Mar	Apr	May	Jun	Jul	Aug	Sep	Oct	Nov	Dec
2010	212.2	199.9	194.0	195.5	196.7							
2009	203.3	205.3	201.8	202.0	201.7	198.0	207.8	210.8	206.5	206.4	215.4	215.2
2008	191.4	196.8	212.4	212.5	206.1	208.0	209.9	215.9	215.3	214.3	207.7	211.8
2007	224.2	217.9	200.7	199.3	196.4	196.2	199.9	200.1	200.3	203.0	204.1	199.7

SUGAR Weight=3.61883

Month/ Year	Jan	Feb	Mar	Apr	May	Jun	Jul	Aug	Sep	Oct	Nov	Dec
2010	277.0	277.0	268.2	252.8	245.8							
2009	167.4	179.2	180.3	191.1	195.8	201.8	202.5	217.3	233.0	234.9	248.4	250.0
2008	143.2	144.4	146.9	149.6	149.1	148.1	149.8	158.3	160.6	160.6	160.9	161.0
2007	155.2	152.3	149.3	148.2	143.8	141.1	140.9	140.2	141.2	141.5	140.9	140.6

POTATO Weight=0.25647

Month/ Year	Jan	Feb	Mar	Apr	May	Jun	Jul	Aug	Sep	Oct	Nov	Dec
2010	255.3	221.9	193.8	177.6	192.5							
2009	177.0	178.1	201.9	249.1	282.7	337.2	395.9	405.8	445.6	483.8	479.1	363.6
2008	246.7	216.6	226.1	214.9	214.1	211.3	231.0	237.3	241.4	243.6	240.9	195.8
2007	166.3	162.7	190.2	202.7	227.4	257.5	279.2	289.5	291.3	296.3	285.4	260.2

ONION Weight=0.09372

Month/ Year	Jan	Feb	Mar	Apr	May	Jun	Jul	Aug	Sep	Oct	Nov	Dec
2010	369.3	344.5	255.7	206.2	194.9							
2009	321.9	305.2	287.4	233.3	232.6	231.4	230.5	229.5	242.6	304.4	357.4	370.2
2008	173.3	160.5	167.5	167.0	153.3	171.7	182.1	220.2	224.6	228.7	259.8	273.3
2007	225.5	245.8	214.4	176.9	165.3	194.6	244.1	280.7	335.2	352.7	322.8	238.1

Source: Ministry of Commerce and Industries, Govt. of India

TABLE NO - 13.1
STATEMENT SHOWING ACTION TAKEN UNDER E.C. ACT DURING THE YEAR 2008 - 09

MONTH	NO.OF CHECKS RADE	NO. OF RAIDS MADE	NO. OF CASES DETECTED	NO. OF P.R. FILED	NO. OF PERSONS ARRESTED	NO. OF PERSONS CONVICTED	NO. OF LICENCE SUSPENDED	NO. OF LICENCE CANCELLED	AMOUNT OF SECURITY DEPOSIT FORFITTED	AMOUNT OF ESSENTIAL COMMODITIES SEIZED	AMOUNT OF ESSENTIAL COMMODITIES CONFISCATED	AMOUNT FINE IMPOSED
1	2	3	4	5	6	7	8	9	10	11	12	13
APRIL	5438	224	72	4	2		31	12	4,500.00	20,62,297.00	1,54,946.00	1,37,400.00
MAY	5996	439	279	12	1		68	62	31,600.00	12,57,002.00	4,16,526.00	22,000.00
JUNE	5572	275	317	4	2		38	6	97,100.00	6,34,478.00	1,100.00	20,500.00
JULY	5137	55	82	2	1		6	2	23,500.00	6,59,279.00	45,551.00	1,13,100.00
AUGUST	6571	118	83	6	8		44	15	31,600.00	2,64,975.00	27,663.00	93,900.00
SEPTEMBER	5483	199	71	26	5		14	5	71,500.00	5,23,990.00	48,581.00	23,400.00
OCTOBER	7895	62	48	18	1		25	6	53,900.00	96,911.00	27,928.00	3,500.00
NOVEMBER	5785	125	58	3			17	6	23,750.00	4,58,288.00	1,57,119.00	9,500.00
DECEMBER	8353	384	528	36	4		109	18	66,300.00	10,16,124.00	1,33,107.00	74,600.00
JANUARY	5875	93	39	2	1		9	1	1,000.00	2,55,415.00	13,418.00	7,000.00
FEBRUARY	3882	90	50	2			24	5	21,000.00	83,307.00	51,985.00	11,000.00
MARCH	9281	67	110	3			13	5	41,200.00	6,72,299.00	4,500.00	31,300.00
TOTAL	75268	2131	1737	118	25	0	398	143	4,66,950.00	79,84,365.00	10,82,424.00	5,47,200.00

(47)

TABLE NO - 13.2
STATEMENT SHOWING ACTION TAKEN UNDER E.C. ACT DURING THE YEAR 2009-10

MONTH	NO.OF CHECKS AND RADES MADE	NO. OF CASES DETECTED	NO. OF SHOW CAUSE ISSUED	NO. OF P.R. FILED	NO. OF PERSONS ARRESTED	NO. OF PERSONS CONVICTED	NO. OF LICENCE SUSPENDED	NO. OF LICENCE CANCELLED	AMOUNT OF SECURITY DEPOSIT FORFITTED	AMOUNT OF ESSENTIAL COMMODITIES SEIZED	AMOUNT OF ESSENTIAL COMMODITIES CONFISCATED	AMOUNT FINE IMPOSED
1	2	3	4	5	6	7	8	9	10	11	12	13
APRIL	4884	10	5				3	2		1,86,791.00	17,181.00	1,000.00
MAY	5428	25	13	2			10	3		11,58,977.00	1,28,638.00	24,600.00
JUNE	5921	108	44				22	2	6,500.00	2,60,169.00	18,601.00	8,500.00
JULY	6475	145	68	8			64	4	7,500.00	8,09,806.00	28,535.00	1,02,800.00
AUGUST	5026	211	139	3	1		85	54	13,500.00	10,88,378.00	45,142.00	6,10,700.00
SEPTEMBER	6831	344	312	5	5		50	33	20,100.00	1,58,24,538.00	10,737.00	49,600.00
OCTOBER	6402	382	289	31			52	12	69,250.00	83,65,526.00	49,905.00	65,400.00
NOVEMBER	4911	180	147	17			28	1	24,500.00	2,45,654.00	16,656.00	19,500.00
DECEMBER	11604	293	182	98		9	70	11	7,543.00	1,15,21,392.00	10,84,045.00	1,19,300.00
JANUARY	4757	127	96	13			16	6	13,050.00	4,90,137.00		15,800.00
FEBRUARY	4011	85	63	11			12	12	12,250.00	94,065.00	1,400.00	23,500.00
MARCH	8909	213	174	32			27	30	40,800.00	4,46,152.00	300.00	6,300.00
TOTAL	75159	2123	1532	220	6	9	439	170	#####	4,04,91,585.00	14,01,140.00	10,47,000.00

(48)

TABLE – 14.1
CONSUMER WELFARE AND PROTECTION

A) CONSUMER WELFARE:

The scheme aims at awaring and educating consumers in various ways and means to protect them from harassment of unscrupulous traders, businessmen, manufacturers and service providers etc. as per the followings:

- (i) Awareness campaign and meeting are held by different field offices, voluntary consumer Organisations and NGOs with financial assistance.
- (ii) Workshops are conducted at State level and by Organisations on different topics like Electricity, Telephone, Petroleum and Petroleum Products, Banking, Insurance, Legal Metrology in presence of experts and public.
- (iii) Observance of National Consumers Day and World consumer Rights Day at State and Dist. Level by Government offices and Voluntary Organisations.
- (iv) Printing and distribution of posters and leaflets.
- (v) Advertisement in print and electronic media.
- (vi) Display of awareness messages through wall paintings and Hoardings.
- (vii) Awareness messages through performing art of folk dance and music like street play, Daskathia, Pala, Ghodanacha, Magic show etc.
- (viii) Awareness through setting up stalls in prominent melas, Mahoschavas, Ratha Yatra, Baliyatra, Adivasi Mela to disseminate information, literature, exhibition etc.
- (ix) Discussion and talk shows in local T.V. Channel, Radio and Gramsat Programmes.
- (x) Educating school children under Consumer Club scheme. 500 consumer clubs have been set up with financial assistance of Rs.50.00 lakh during 2006-07 in 500 schools covering 21 districts with assistance and guidance of 25 VCOs/NGOs acting as co-ordinating agency. They have

been educated through teaching, meetings, literatures, booklets, drawing quiz essay and debate competitions, rally, slogan etc.

- (xi) Consumer Counseling Centres have been opened in office premises of the State Commission, District Forum. Local VCOs/NGOs have been selected to assist/guide the consumers before filing cases.
- (xii) State Institute of Consumer Awareness (SICA) has been set up in the premises of OSCSC Ltd. to work as a resource centre and to publish printing materials etc. A toll free Helpline No.1800-3456-760 has been set up in the office of SICA to keep note of grievances and to guide the people on PDS and Consumer related activities.
- (xiii) The Additional District Magistrate of the districts are declared as District Consumers Protection Officer for better co-ordination and supervision of work.
- (xiv) A corpus Fund called "Orissa Consumer Welfare Fund" has been created during the year 2004-2005 with Rs.97.00 lakh to provide financial assistance to different organizations to undertake Consumer welfare/ awareness activities.
- (xv) Besides, another toll free helpline No.155335 has been set up to keep note of grievance and guide the people.
- (xvi) Consumer Advisory Centre at Berhampur and Bhubaneswar has been set up in the office premises of District Forum and Directorate of Legal Metrology respectively under GTZ scheme. Counselors have been selected for those centres.

B) CONSUMER PROTECTION :

The Consumer Protection Act, 1986 was enacted by the Govt. of India with the view to protect the interest of consumers from the unscrupulous traders, businessmen, manufacturers, service providers etc. and provide protective machinery for redressal of their grievances. Accordingly, the State Govt. enacted the rules called "The Orissa Consumer Protection Rules, 1988".

In the State One State Consumers Disputes Redressal Commission called as State Commission and 31 District Consumer Disputes Redressal Forums called District Forum are functioning. One District Forum in each District and additional one at Rourkela has been set up.

The State Commission and each District Forum consists of One President and Two Members, one of whom shall be woman.

Under confonet Project Scheme the State Commission and all District Forums have been computerized.

The State Commission and District Forum having large number of Pending cases conducts Lok Adalat for speedy disposal of cases.

Details of cases filed, disposed in the State Commission and District Forum are given in a separate table.

DEPOSIT IN ORISSA CONSUMER WELFARE FUND

Year	Deposit in to Fund	Scheme	Budget provision	Sanction of Fund
2004-05	25,22,000 24,78,572	State Share by Commercial Tax	25,22,000	Nil
2005-6	47,00,000 1,14,000	By Govt. of India Transfer credit of Fees etc	50,00,000	18,05,200
2006-07	7,24,000	-do-	35,00,000	17,18,200
2007-08	7,43,000	-do-	20,00,000	Nil
2008-09	-	-do-	20,00,000	19,87,410
2009-10	17,43,921	-do-	10,00,000	10,00,000

Grants received from Government of India towards Consumer Welfare and Protection

Sl. No.	Year	Amount	Scheme	Purpose
1	2002-03	3,00,000	Jagruti Shvir Yojana	
2	2004-05	47,00,000	State Consumer Welfare Fund	Govt. of India Share
3		2,70,00,000	Infrastructure Development	Construction of office building etc.
4	2005-06	50,00,000	Consumer Club Scheme	To set up 500 Consumer Club

5	2006-07	37,50,000	Creating Consumer Awareness in districts	-
6		2,96,61,000	Integrated project scheme	Extension of existing building etc.
7		27,25,000	State Consumer Helpline	-
8	2007-08	10,00,000	Awareness amongst TPDS beneficiaries	-
9		4,80,000	Creating Consumer Awareness	-
10		10,00,000	Awareness amongst TPDS beneficiaries	-
11	2008-09	30,00,000	Creating Consumer Awareness	-
12		1,03,50,000	Integrated Projects Scheme	2nd instalment for completion of building
13		3,00,000	State Consumer Welfare Fund	Govt. of India balance share
14	2009-10	50,00,000	Consumer Club Scheme	2nd instalment of 1st phase scheme
15		60,00,000	Creating Consumer Awareness	-

OTHER ASPECTS OF CONSUMER AWARENESS PROGRAMME

Consumer Club

To educate the school children under Consumer Club Scheme, 500 Consumer Clubs have been set up with financial assistance of Rs.50.00 lakhs during 2006-07 in 500 schools covering 21 districts with the help and guidance of 25 VCO's/ NGO's acting as coordinating agency. They have been educated through teaching, meeting, literature, booklets, drawing, quiz, essay and debate competitions, rally, slogan etc.

Consumer Advice Centre

The German Technical Cooperation (GTZ) providing technical support to the Department of Consumer Affairs (DOCA) Ministry of Food, Consumer Affairs, Food and Public Distribution under the project "Consumer Protection and Sustainable Consumption in India" as a part of the Advisory Service in Environment Management Programme (ASEM) of Indo-German Bilateral Programme.

The main objective of the Project is to provide technical and financial support to the State Govt. and set up Consumer Advice

Centres in the state. Two Consumer Centres have been established in the state i.e. one in Bhubaneswar and another one at Berhampur. They are functioning having one Project Manager and 5 Consumer Advisors through selected VCO's in addition to State Consumers Helpline.

Services of Consumer Advice Centre

- a) General consumer pre-sales information (eg. results of comparative testing, quality labels etc.)
- b) Post purchase advice on product and service complaints, clarifying the legal position and offering next-step advice.
- c) Consumer safety information about potentially dangerous products or product recalls.
- d) Educating consumers on sustainable consumption hygiene, healthy food, avoiding waste and disposing it correctly.
- e) Efficient use of energy and water etc.
- f) Special cases or enquires.
- g) Standardized awareness frequently accruing problems/questions in different sectors.

Sanjog Helpline

Food Supplies and Consumer Welfare Department have utilised the use of "Sanjog Helpline" for registering consumer complaints on Rs.2/- kg rice scheme, Paddy procurement, Targeted Public Distribution (TPDS) etc. and the same has been functioning since 5th November, 2009.

Under this system, citizens lodge complaints through Toll Free No. 155335 or 18003456770. The person sitting at Sanjog Helpline receives the Call and registers the grievance. Afterwards SMS is sent to Inspector of Supplies/Marketing Inspector with copy to the concerned C.S.O. and B.D.O. They are also given a consolidated fax on received grievance to resolve the grievance within the stipulated time period. On finding the grievances solved, BDO closes the grievance either calling to Sanjog Helpline or by logging into the Sanjog Helpline Application. If grievance is not resolved within the stipulated time by the Inspector of Supplies/ Marketing Inspector, the grievance escalates to the Civil Supplies Officer. He takes immediate action on the same and reports to the Collector who later on closes the grievance.

TABLE NO. 14.2
ACTIVITIES OF CONSUMER REDRESSAL FORUMS IN THE STATE

Sl.No.	Name of the district	2008 - 09		2009-10	
		No of cases filed	No of cases disposed	No of cases filed	No of cases disposed
1	Angul	241	219	187	178
2	Balasore	205	169	175	111
3	Baragarh	86	87	127	84
4	Bhadrak	108	205	66	83
5	Bolangir	112	39	123	153
6	Boudh	162	111	126	130
7	Cuttack	481	636	330	453
8	Deogarh	0	0	100	28
9	Dhenkanal	248	194	356	305
10	Gajapati	26	42	22	22
11	Ganjam	129	177	120	197
12	Jagatsinghpur	169	158	208	214
13	Jeppur	147	165	136	148
14	Jharsuguda	116	113	103	118
15	Kalahandi	118	7	37	121
16	Kandhamal	0	0	58	66
17	Kendrapada	198	162	137	157
18	Keonjhar	81	73	85	93
19	Khurda	716	557	679	387
20	Koraput	120	189	145	164
21	Malikangiri	59	48	104	62
22	Mayurbhanj	61	18	136	82
23	Nawarangpur	75	64	60	63
24	Nayagarh	68	62	59	63
25	Nuapada	45	42	32	42
26	Puri	216	242	255	177
27	Rayagada	206	214	222	208
28	Sambalpur	190	187	92	72
29	Sonepur	0	0	67	47
30	Sundargarh-1	147	122	157	170
31	Sundargarh-2 (RKL)	171	128	214	288
32	State Commission	119	76	156	138
33	Appeal Case	1033	570	969	952
	TOTAL	5853	5076	5843	5576

Source : Consumer Welfare Section.

TABLE NO. 15
QUALITY CONTROL CELL

A) ORGANISATION

The Quality Control cell is an important technical wing of Food Supplies and Consumer Welfare Department functioning under the control of Commissioner-cum-Secretary to Govt. it was created by upgrading the erstwhile food grains analytical laboratory under central assistance. This wing ensures quality of food grain and other essential commodities for the benefit of the consumers.

B) QUALITY CONTROL OFFICERS		Nos.
1	Deputy Director, Quality Control	1
2	Assistant Director, Quality Control	1
3	Analyst, Quality Control Laboratory	1
4	Assistant Analyst, Quality Control Laboratory	4

C) MAIN OBJECTIVES

To ensure quality in food grains distributed under Public Distribution System

To ensure quality of Fair Average Quality paddy during procurement

To take different training programme in quality of foodgrains

To inspect storage points and to investigate public complaints relating to quality of food grains

TABLE NO. 16
DISTRICTWISE GODOWNS OWNED BY THE DEPTT. & OSCSC LTD., FCI, MFPS & MOBILE
VANS IN OPERATION(As on 31.03.10)

Sl. No.	Name of the districts	DEPTT. & OSCSC		FCI		No. of MFPS	No. of Mobile Vans
		No. of Godowns	Total Capacity	No. of Godowns	Total Capacity		
1	Angul	0	0	1	10000		
2	Balasore	8	5250	3	35000	2	3
3	Baragarh	6	3310	1	15000		5
4	Bhadrak	7	5000				
5	Bolangir	5	3668	1	15000	4	1
6	Boudh	2	434				2
7	Cuttack	17	10530			4	
8	Deogarh						
9	Dhenkanal	1	2000	1	12500		
10	Gajapati	1	250	1	10000		11
11	Ganjam	27	14492	1	14420		
12	Jagatsingpur	8	5207			1	
13	Jaipur	13	8187				
14	Jharsuguda	3	600	1	50000		
15	Kalahandi	9	3645	1	13340		1
16	Kendrapara	10	6050				
17	Keonjhar	10	5500	2	12500	1	3
18	Khurda	11	9200	2	24617	5	
19	Koraput	7	4243	1	17500	2	9
20	Malkangiri	3	750			2	5
21	Mayurbhanj	18	4750	1	10000		12
22	Nabarangpur	4	1000	1	10000		7
23	Nayagarh	1	367			6	
24	Nuapara	3	1535			1	4
25	Phulbani	4	1000	1	7500	2	3
26	Puri	12	6500				
27	Rayagada	6	3540	1	10000	2	13
28	Sambalpur	6	5070	2	28300	2	
29	Sonepur	1	500				
30	Sundargarh	8	4750	1	12500	1	9
	TOTAL	211	117328	23	308177	35	88

(Capacity in ' MT)

TABLE NO. 17.1
MONTHWISE ACTIVITIES OF LEGAL METROLOGY, 2008 - 09

Month	No of cases detected	No. of cases Compounded	No. of prosecution made	Fines if any imposed (in Rs)	Revenue collected (in Rs)
April	190	176		2,21,950.00	25,69,808.00
May	446	406		4,53,900.00	30,94,731.00
June	423	459		5,52,850.00	30,49,626.00
July	443	381	1	4,24,750.00	26,96,134.00
August	479	486		3,47,500.00	30,15,217.00
September	369	358		6,23,800.00	32,69,855.00
October	343	336		5,07,300.00	32,90,363.00
November	421	429		3,11,050.00	42,37,982.00
December	466	485	5	4,24,200.00	51,46,592.00
January	314	298		8,95,750.00	58,09,957.00
February	372	388		5,35,700.00	68,96,335.00
March	591	625	8	9,12,550.00	64,94,339.00
TOTAL	4857	4827	14	62,11,300.00	4,95,70,939.00

TABLE NO. 17.2
MONTHWISE ACTIVITIES OF LEGAL METROLOGY, 2009-10

Month	No of cases detected	No. of cases compounded	No. of prosecution made	Fines if any imposed (in Rs)	Revenue collected (in Rs)
April	168	146		2,76,600.00	27,60,025.00
May	250	256	4	3,96,000.00	37,62,144.00
June	210	190		3,95,150.00	30,26,332.00
July	418	368	1	4,44,250.00	31,19,125.00
August	350	376		3,49,700.00	33,54,018.00
September	365	381		3,18,800.00	31,40,511.00
October	673	653	3	7,32,410.00	41,26,538.00
November	499	511	2	4,61,900.00	52,28,465.00
December	540	530	4	6,12,900.00	58,63,894.00
January	312	263	4	3,43,150.00	60,12,651.00
February	462	474	4	3,81,865.00	60,65,959.00
March	586	668	4	5,06,410.00	78,45,148.00
TOTAL	4833	4816	26	52,19,135.00	5,43,04,810.00

TABLE NO. 18.1

TELEPHONE NUMBERS OF MINISTERS & OFFICERS OF F.S & C.W. DEPARTMENT AT STATE HEADQUARTERS					
Sl.No.	Name	PABX	OFFICE	RESIDENCE/MOBILE	
1	Sri Sarada Prasad Nayak Minister, F.S. & C.W.	2187	2536931	9437045711	
2	Sri P.S. to Minister, F.S & C.W.	2187	2536931	9438324305	
3	Sri Ashok K K Meena, I.A.S Comm-cum-Secretary	2336	2536892	9439264764	
4	Sri Sankar Rao, P S to Secretary	2336	2536892		
6	Sri Rasmi Ranjan Patnaik, Special Secy	2343	2395238	2531689 / 9937926001	
7	Sri Gouranga Parida, P S to Spl. Secy				
8	Sri Sibabrata Dash, DCA-cum-Addl.Secy		2394967	2394967	
9	Sri Basanta Ku. Sethi, P S to DCA-cum- Addl. Secretary				
10	Sri Prafulla Kumar Sahoo F.A-cum-Jt. Secretary	2339	2390307		
11	Mrs. Manjulata Swain Dy. Director-cum-Under Secretary			9437229178(M)	
12	VACANT Under Secretary	2344			
13	Sri Pravakar Rout Deputy Director, Market Intelligence	2349			
14	Sri Radha Ch. Pattnaik Asst. Director, Quality Control	2347	2396227		
15	Ms. Debajani Dhal Deputy Director, Food Supplies	2347		9437212904(M)	
16	Sri G.Bag Asst. Controller, Legal Metrology		2350184		
17	Smt. Pupalata samal AFA-cum-Under Secretary	2346		2533962	
18	R N Misra, M I Officer, State Hqrs.	2349		9861471575(M)	
19	Control Room		2393644		
20	O E Section	2350			
21	Accounts Section	2355			
22	Budget Section	2353			
23	F E II / FE I Section	2356			
24	Gen. & Misc. Section	2358			
25	Special Estt. Section	2361			
26	ConsumerWelfare/ConsumerCourt Section	2360			
27	L & L Section / P & L Section	2352			
28	MI section	2349			
29	E C section/ IMU Section	2357			
30	Pension & Arear Section	2351			
31	Food Security/Corpn. Estt. section	2340			
32	Issue Section	2359			

**TABLE NO. 18.2
TELEPHONE NUMBERS OF CIVIL SUPPLIES OFFICERS**

DISTRICT	NAME	STD-CODE	OFFICE	Mobile
Angul	Santosh Kumar Nanda	06764	230282	9438200031
Balasore	Narayan Ch. Pati I/c	06782	262007	9438200032
Baragarh	Priyanath Mishra	06646	235042	9438200033
Bhadrak	Pravakar Sethi	06784	240424	9438200034
Bolangir	Ramesh Ch. Panda I/c	06652	232672	9438200035
Boudh	Bhaktanath Nayak	06841	222251	9438200036
Cuttack	Santash Ku. Mishra I/c	0671	2507744, 2507626	9438200037
Deogarh	R K Dehuri	06641	226458	9438200038
Dhenkanal	Bhagyadhar Das	06762	224530, 224625	9438200039
Gajapati	A K Das	06815	222523	9438200040
Ganjam	P D M Khosla	06811	263931	9438200041
Jagatsinghpur	Laxmikant Behera	06724	220303, 220403	9438200042
Jajpur	Saubendra Routray I/c	06728	222055	9438200043
Jharsuguda	Sri Balamukanda Majhi	06645	273144	9438200044
Kalahandi	S P Dora	06670	230392	9438200045
Kandhamal	B Kerketa	06842	253670	9438200046
Kendrapada	Shyama Sundar Tripathy	06727	220544	9438200047
Keonjhar	Sri Satrugna Nath Dalai	06766	255405	9438200048
Khurda	Amar Mahapatra I/c	06755	220607	9438200049
Koraput(Jeypore)	Manmath Ku.Dey	06854	251649	9438200050
Malkangiri	R M Bepari	06861	230358	9438200051
Mayurbhanj	Srikar Majhi	06792	252648	9438200052
Nawarangpur	Bidyadhar Nayak	06858	234199	9438200053
Nayagarh	Gaya Prasad Si	06753	252439	9438200054
Nuapada	Tularam Nayak	06678	223430	9438200055
Puri	Sri K C Das	06752	222228	9438200056
Rayagada	B N Kokara	06856	222425	9438200057
Sambalpur	Ranjan Seth	0663	2410845	9438200058
Sonepur	B K Rath I/c	06654	220290	9438200059
Sundargarh	Abhiram Pradhan	06622	2172248	9438200060
State Hqrs.		0674	2396227	
ACSO, Rourkela	Deepak Ku. Satpathy I/c	0661	2505155	9861007572
ADM, Rourkela	Susil Kumar Das	0661	2500239	
ADM, Paradeep	Sanjit Kumar Mishra	06722	222237	
ADM, BBSR	Hari Ballav Mishra	0674	2393440	

TABLE NO. 18.3
Telephone Nos. of Market Intelligence Officers

<i>Name of the sector</i>	<i>Name</i>	<i>Office</i>	<i>Mobile</i>
Balasore		06782-265741	
Cuttack	Gyan Ranjan Jena,MIO I/c	0671-2507904	
Berhampur	Khira Das	0680-2207427	9438149709
Bhubaneswar	Ashok Kumar Mohanty	0674-2391859	9437448247
Sambalpur		0663-2410216	
Rourkela	Deepak Ku. Saipathy, I/c	0661-2504463	9861007572
Keonjhar	Hadibandhu Sethi, MIO I/c	06766-255405	9437224079
Bhawaniapatna	K P C Patro	06770-230392	9437736536
Jeypore		06854-230649	9437736537

Telephone Number of Orissa State Civil Supplies Corporation Limited

<i>Name of the Officer</i>	<i>Designation</i>	<i>Office</i>	<i>Mobile</i>
Sri Ashok Kumar K. Meena	Chairman		
Sri S K Vashisth	Managing Director		
Sri Pramod Kumar Das	Gen. Manager,PDS	2390310	9438200030
Smt. Swati Mishra	Manager,PDS		9438200028
Sri Sudhansu Sekhar Nayak	Manager, (Dev.)		9438200029
Sri M Muniyya	Gen. Manager(Accts.)		
OSCS Ltd. PABX		2394956	

Telephone Number of Assistant Controller, Legal Metrology.

<i>Name of the Asst. Controller</i>	<i>Designation</i>	<i>Office</i>	<i>Mobile</i>
Vacant	ACLM, Balasore	06782-262465	9437227656
S Jani	ACLM, Bolangir	06652-232044	9437001324
S K Kandulana	ACLM, Cuttack	0671-2441095	9437004861
S Bari	ACLM, Dhenkanal	06762-228407	9437291004
N K Maharana	ACLM, Ganjam	0680-2204678	9937944037
P C Panigrahi	ACLM, Kalahandi	06670-230586	9437206778
D N Mohanty	ACLM, Keonjhar	06766-255361	9338181858
Mayadhar Behera	ACLM, Koraput	06854-250443	9438265658
R C Besoi	ACLM, Mayurbhanj	06792-256413	9437453041
B K Pani	ACLM, Phulbani	-	9437224168
G Bag	ACLM, Puri	-	9437068368
	ACLM, Sambalpur	0663-2410996	9338181858
P C Mohapatra	ACLM, Sundargarh	0661-2507760	9937103285

**TABLE NO. 18.4
TELEPHONE NOS. OF DISTRICT CONSUMER REDRESSAL FORUMS**

Name of District	Name of the President	STD Code	Office
ANGUL	Ballava Kumar Dash	06764	231454
BALASORE	Ajay Kumar Samal	06782	263910
BARGARH	Gouri Sankar Pradhan	06646	231532
BHADRAK	Gunanidhi Patra	06784	241942
BOLANGIR	Dilip Kumar Tripathy	06652	233388
BOUDH	Santanu Kumar Mahapatra	06841	222419
CUTTACK	Manoranjan Hazra	0671	2366339
DEOGARH	Vacant	06641	226879
DHENKANAL	Prabhat Kumar Sahoo	06762	224279
GAJPATI	Bhubaneswar Pattanaik	06815	223127
GANJAM	Harish Chandra Nayak	06811	2200860
JAGATSINGHPUR	Surendra Nath Mishra	06724	220107
JAJPUR	Gopinath Panda	06728	223498
JHARSUGUDA	Sundarlal Behera	06645	270699
KALAHANDI	Akshya Kumar Purohit	06670	231008
KANDHAMAL	Ashok Kumar Behera	06842	254363
KENDRAPADA	Krushna Chandra Swain	06727	232030
KEONJHAR	Vacant	06766	253390
KHURDA	Sk. Jan Hossain	0674	2350122
KORAPUT	Laxmi Narayan Panigrahi	06852	230792
MALKANGIRI	Bijay Kumar Mohanty	06861	230337
MAYURBHANJ	Himansu Kumar Panigrahi	06792	257574
NAWARANGPUR	Seshadeb Bisoi	06858	232780
NAYAGARH	Pradip Kumar Patnaik	06753	252913
NUAPADA	Bhupatilal Sao	06678	223624
PURI	Hruday Ballav Das	06752	224781
RAYAGADA	K A Ramachandran	06856	223025
SAMBALPUR	Vacant	0663	2410037
SONEPUR	Subash Chandra Nayak	06654	220401
SUNDARGARH(I)	Md. Inclab Umar	06622	2173234
SUNDARGARH(II), RKL	Sarat Chandra Chhatoi	0661	2642989
STATE C D R COMM, CTC	Hon'ble Justice A K Samantray (President)	0671	2365398
STATE C D R COMM, CTC	D K Patnaik (Secretary)	0671	2363604

GOVERNMENT OF ORISSA
FOOD, SUPPLIES AND CONSUMER WELFARE DEPARTMENT

NOTIFICATION

[The Orissa Specified Foodstuffs (Stock Holding Limit) Order, 2010]

ORDER

No. 4265 / Bhubaneswar, dated the 6th March, 2010
FS.C.5/07 (Pt.)

In exercise of the powers conferred by section 3 of the Essential Commodities Act, 1955 (10 of 1955), read with the notifications of Government of India in the Ministry of Consumer Affairs, Food and Public Distribution (Department of Consumer Affairs) No.GSR-104(E) dated 15th February, 2002, published in the Gazette of India, Extraordinary (Part-II, Section-3 sub-section-(i) and in the Ministry of Consumer Affairs, Food and Public Distribution. (Department of Consumer Affairs) No.SO-400(E), dated 28th February, 2008 and No. SO-823(E) dated 7th April, 2008 published in the Gazette of India, Extraordinary [Part-II, section-3, sub-section-(ii)] the State Government do hereby make the following order, namely :-

1. Short title, extent and commencement-

- (1) This order may be called the Orissa Specified Foodstuffs (stock holding limit) Order, 2010.
- (2) It shall extend to the whole of State of Orissa.
- (3) It shall come into force on the date of its publication in the official gazette of the State.

2. Definitions :- In this Order, unless the context otherwise requires, –

- (a) **“Act”** – means the Essential Commodities Act, 1955;
- (b) **“Appellate Authority”** means any authority appointed by the State Government to exercise the powers of Appellate Authority under this order;
- (c) **“Bulk Consumer”** means a hotel, restaurant, educational institution with hostels facilities, jails, hospitals, religious or charitable institutions;

- (d) **“Controller”** – means the Commissioner-cum-Secretary to Government/Principal Secretary to Govt., FS & CW Department;
- (e) **“Collector”** means the Collector in charge of revenue district;
- (f) **“Commission Agent”** means a commission agent having in the customary course of business as such agent authority either to sell specified foodstuffs, or to consign specified foodstuffs for the purpose of sale or to buy foodstuffs;
- (g) **“Dealer”** means a person, firm, association of persons, company, institutions, organisation or co-operative society approved by Central or State Government engaged in the business of purchase, sale or storage for sale of any one of pulses, edible oil seeds and edible oils whether or not in conjunction with any other business and includes commission agent but includes the cultivators in respect of their own produces;
- (h) **“Edible Oils”** means any oil used directly or after processing for human consumption and includes hydrogenated vegetable oils;
- (i) **“Importer”** means who imports specified vegetable oils;
- (j) **“Producer”** means person carrying on the business of milling, expelling, extracting or manufacturing any essential commodity but excludes the cultivators of their own produces;
- (k) **“Schedule”** means Schedules appended to this order; and
- (l) **“Specified foodstuffs”** means, pulses, edible oil seeds and edible oils;
3. Restriction and possession of pulses, edible oil seeds and edible oils-
- (1) No dealer shall after a period of fifteen days coming into force of this order either by himself or by any person on his behalf store or have in his possession, at any time any pulses, edible oil seeds and edible oils in excess of the quantities specified below;

Sl. No.	Products	Producer	Dealer
1.	Edible oils seeds	One sixth of the maximum quantity of edible oilseeds used by him in any of the last three years ending on 30 th day of April, 2010	500 Quintals
2.	Edible Oils including refined oil	One sixth of his maximum production in any of the last three years ending on 30 th day of April, 2010	750 Quintals
3.	Pulses	One sixth of the maximum quantity of unmilld pulses used by him in any of the three years ending from 30 th April, 2010	750 Quintals

4. **Order not to apply in certain cases** – Nothing in this order shall apply to :-

(a) A corporation or a company owned or controlled by the Central Government or a State Government or a statutory Corporation.

(b) To an importer of specified commodities under open general license.

(c) Stocks held on behalf of Government.

5. **Appeal** :- A dealer aggrieved by any action of an officer authorised by the State Government under this order may appeal to the Appellate Authority within a period of 30 days from the date of which such action appears to be prejudicial to him and the specified authority in Essential Commodities Act before making any decision in such appeal. The appeal so filed may be disposed of within a period of 90 days from the receipt of the said appeal.

6. **Power to issue direction** – The Government may, from time to time, issue such directions as it considers necessary for the purpose of giving effect to the provisions of this order and / or the dealers/producers to whom such directions have been issued.

7. **Powers of entry, search & seizure etc.** – The Controller/ the Collector or any other officer authorised by the State Government in this behalf, may with such assistance, if any, as he thinks fit:-

(a) require the owner, occupier or any person in charge of the place, premises, vehicles in which he has reason to believe that any contravention of the provisions of this order or has

been, is being or is about to be committed, to produce any books, accounts or other documents showing transactions relating to such contraventions;

(b) enter, inspect or break open any place, premises, vehicles or vessels in which he has reason to believe that any contravention of the provisions of this order is being or is about to be committed;

(c) take or cause to be taken extracts from or copies of any documents showing transactions relating to such contraventions which are produced before him/her.

(d) take or cause to be tested the weight of all or any of the essential commodities found in any such premises:

Provided that in entering upon and inspecting any premises the persons so authorised shall have due regard to the social and religious customs of the persons occupying the premises;

(e) search, seize and remove the stocks of the essential commodities and the packages, coverings, animals, vehicles, vessels or other conveyances used in carrying the said essential commodities in contravention of the provisions of this order and thereafter take or authorize the taking of all measures necessary for securing the production of the essential commodities and the packages, coverings, animals, vehicles, vessels or any other conveyances so seized in a court and of their safe custody pending such production.

The provisions of section 100 of the Code of Criminal Procedure, 1973 (2 of 1974) relating to search and seizure shall, so far as may be, apply to searches and seizures under this clause.

8. Noting in this order will apply to the dealers who have been granted license to deal in PDS commodities under the provision of Public Distribution System (control) Order, 2001 issued by Central Government and published in the Gazette of India Extraordinary Part-II Section-3 Sub-Section (I) on 31.08.2001 and the Orissa P.D.S. (Control) Order, 2008.

9. **Power to prescribe monthly returns** :- Every dealer including a producer shall furnish by the 7th of each following month to the Collector of the districts return in respect of essential

commodities stored and sold by him during a month in the proforma as specified in the Schedule. The Collector of the district shall submit a consolidated return to the Food, Supplies & Consumer Welfare Department in respect of his/her district by 15th of each succeeding month.

10. **Repeal and savings:-** The Orissa Specified Foodstuff (licensing and storage control) Order, 2008 the Orissa Essential Foodstuffs (Prevention of Hoarding and Requisitioning of Stocks) Order, 1974, the Orissa Pulses, Edible Oil Seeds and Edible Oil Dealers (Licensing) Order, 1977, the Orissa Wheat and Wheat Products (Licensing) Order, 1988 are hereby repealed with effect from the date of enforcement of this order.

Provided that such repeal shall not affect:-

- (a) The previous operation of any order repealed under this clause (hereinafter referred to as the repealed Order) or anything duly done or suffered therein; or
- (b) Any right, privilege, obligation or liability acquired, accrued or incurred under the repealed order; or
- (c) Any penalty, forfeiture or punishment incurred in respect of any offence committed against the repealed order; or
- (d) Any investigation, legal proceedings or remedy in respect of any such right, privilege, obligation, liability, penalty, forfeiture or punishment, and any such investigation, legal proceeding or remedy may be instituted, continued or enforced;
- (e) And any such penalty, forfeiture or punishment may be imposed as if this order had not been issued.

11. **Validity of this order:** - This order shall remain in force continuously with the validity of the central order issued under No. SO-400(E) dated 28th February, 2008 in respect of wheat and pulses and central order No.SO.823(E) dated 7th April, 2008 in respect of edible oils and edible oil seeds.

By order of the Governor,
Sd/- Manoj Ahuja
Commissioner-cum-Secretary to
Government

**Schedule
(See clause-9)**

Monthly statement in respect of commodities stored/ milled/ processed under the provision of the State Orissa Specified Foodstuffs (stock holding limit) Order, 2010.

(For Producers)

Name and address of the producers:

Details of commodities stored/ milled/ processed/ finished products.
(Fig. in quintal)

Month	Opening Balance	Stock Received		Stocks milled	Finished Products obtained from milling	Product sold (item wise)	Quantity sold	Closing Balance
		Outside the State	Inside the State					

Dated:

Dealer

Signature of the

(Producer)

(For Dealers)

Name and address of the Wholesaler :

Details of commodities stored/ milled/ processed/ finished products.

(Fig. in quintal)

Month	Opening balance	Stock Received		Stocks sold (item wise)	Closing Balance
		Outside the State	Inside the State		

Dated:

Dealer

Signature of the

(Wholesaler)

GOVERNMENT OF ORISSA
FOOD, SUPPLIES AND CONSUMER WELFARE DEPARTMENT

NOTIFICATION

No. 4266 /Bhubaneswar, dated the 6th Mar, 2010
FS.C.5/07 (Pt.)

In exercise of the powers conferred by Sub-Clause-(b) of Clause (2) of the Orissa Specified Foodstuffs stock holding limit Order, 2010, the State Government do hereby appoint the Commissioner-cum-Secretary to Govt./ Principal Secretary to Govt. FS & CW Department. to exercise the powers and perform the duties of Appellate Authority.

By order of the Governor
Sd/- Manoj Ahuja
Commissioner-cum-
Secretary to Government

GOVERNMENT OF ORISSA
FOOD, SUPPLIES AND CONSUMER WELFARE DEPARTMENT

NOTIFICATION

No. 4267 /Bhubaneswar, dated the 6th Mar, 2010
FS.C.5/07 (Pt.)

In exercise of the powers conferred by Clause-7 of the Orissa Specified Foodstuffs (stock holding limit) Order, 2010, the State Government do hereby authorise the officers mentioned in Column (2) of the Schedule below to exercise the powers under the said clause in the areas mentioned against each in Column (3) thereof :-

SCHEDULE

Sl. No.	Officers	Jurisdiction
(1)	(2)	(3)
1.	Joint Director of Food Supplies	The whole State of Orissa
2.	Deputy Director of Food Supplies	Ditto
3.	Deputy Director of Market Intelligence	Ditto
4.	Deputy Director of Quality Control	Ditto
5.	Assistant Director of Food Supplies	Ditto
6.	Assistant Director of Market Intelligence	Ditto
7.	Assistant Director of Quality Control	Ditto
8.	Civil Supplies Officer attached to State Head Quarters	Ditto
9.	Assistant Civil Supplies Officers attached to State Headquaters	Ditto
10.	Market Intelligence Officers attached to State Headquaters	Ditto
11.	Market Intelligence Supervisor attached to State Headquaters	Ditto
12.	Inspector of Supplies attached to State Headquaters	Ditto
13.	All Collectors of the District	Within the local limits of their jurisdiction

- | | | |
|-----|---------------------------------------------------------------------------|------------------------------|
| 14. | All Sub-Collectors | Ditto |
| 15. | All Civil Supplies Officers | Ditto |
| 16. | All Assistant Civil Supplies Officers | Ditto |
| 17. | All Inspector of Supplies | Ditto |
| 18. | All Market Intelligence Officers | Ditto |
| 19. | All Market Intelligence Supervisors | Ditto |
| 20. | All Market Intelligence Inspectors | Ditto |
| 21. | All Executive Magistrates | Ditto |
| 22. | Assistant Civil Supplies Officers (Attached to Zonal Enforcement Squad) | Ditto |
| 23. | Inspector of Supplies (Attached to Zonal Enforcement Squad) | Ditto |
| 24. | Assistant Civil Supplies Officers attached to District Enforcement Squad. | The whole district concerned |
| 25. | Inspector of Supplies attached to District Enforcement Squad. | Ditto |

By order of the Governor

Sd/- Manoj Ahuja
Commissioner-cum-
Secretary to Government