

For office use only

FOOD SUPPLIES AT A GLANCE

2010-11

FOOD SUPPLIES AND CONSUMER WELFARE
DEPARTMENT
GOVERNMENT OF ORISSA
BHUBANESWAR

Compiled by:-
Market Intelligence Wing

CONTENTS

Sl.No.	Description	Table No.	Page
1	Orissa at a glance	1.1	1
2	District wise Administrative Setup	2	2
3	Population 2011 Census	3	3
4	Monthwise State Average Rainfall	4	4
5	Secretariat Organogram	5.1	5
6	Field Level Organogram	5.2	6
7	Districtwise sanction strength of Executive Staffs	5.3	7
8	Market Intelligence : An overview	6.1	8
9	Districtwise selected markets for reporting Market Intelligence	6.2	9
10	Area of jurisdiction with Head quarters of MIO/MIS	6.3	10
11	Delegation of power to M I Staff.	6.4	11
12	List of Regulated Markets	6.5	12-13
13	Average quantity of consumption	7.1	14
14	Consumption/Requirement of some Essential Commodities	7.2	15
15	Sowing and harvesting period of crops	8.1	16
16	Sowing, harvesting and peak marketing period of principal crops	8.2	17
17	Crop Marketing year	8.3	18
18	Conversion Ratio between the raw materials & the processed products	8.4	19
19	Crop Season for Pulses	8.5	20
20	Production of different Crops in Orissa	8.6	21
21	Districtwise production of Paddy and Rice in Orissa	8.7	22
22	Districtwise procurement of Paddy in Orissa	8.8	23
23	Support price of paddy since 1974-75	9.1	24
24	Minimum support price of Agricultural commodities as fixed by GOI	9.2	25
25	Procurement price, issue price and consumer price of some E.C	9.3	26
26	Issue price of Rice, Wheat, Sugar and Kerosene	9.4	27
27	Number of fair price shops functioning in the state	10.1	28
28	Fair price shops as on March 2011	10.2	29
29	District-wise no. of Ration cards	10.3	30
30	Monthwise allotment & lifting E.C. in the state during 2009-10	11.1	31
31	Monthwise allotment & lifting E.C. in the state during 2010-11	11.2	32
32	Scale of Distribution of P.D. items	11.3	33
33	Districtwise PDS outlet	11.4	34
34	Monthwise average wholesale prices of some EC in the year 2009-10	12.1	35
35	Monthwise average wholesale prices of some EC in the year 2010-11	12.2	36
36	Monthwise average retail prices of some EC in the year 2009-10	12.3	37
37	Monthwise average retail prices of some EC in the year 2010-11	12.4	38
38	All India Retail Price of Essential Commodities as on 31.03.2011	12.5	39
39	Monthwise sale of Petrol & Diesel in Orissa	12.6	40
40	Price of Diesel, Petrol, LPG etc.	12.7	40
41	Monthly Wholesale Price Index	12.8	41
42	Statement showing Action taken under EC Act in the year 2009-10	13.1	42
43	Statement showing Action taken under EC Act in the year 2010-11	13.2	43
44	Consumer Welfare and Protection	14.1	44-47
45	District wise release of Funds for Consumer Welfare	14.2	48
46	Activities of Consumer Redressal Forum in the state 2009-10,2010-11	14.3	49
47	Quality Control Activities	15	50
48	Districtwise godowns and Mobile vans	16	51
49	Monthwise Activities of Legal Metrology, 2009-10	17.1	52
50	Monthwise Activities of Legal Metrology, 2010-11	17.2	53
51	Telephone numbers of Ministers & Officers of FS & CW Deptt	18.1	54
52	Telephone numbers of CSO's	18.2	55
53	Telephone Numbers of Market Intelligence Officers / O.S.C.S.C. Ltd.	18.3	56
54	Telephone numbers of District Consumer Redressal Forum	18.4	57
55	Food and Procurement Policy 2010-11		58-72

TABLE NO. 1.1
ORISSA AT A GLANCE

1	Total area (Sq. Kms)	1,55,707
2	Total Population (2011)Provisional	4,19,47,358
	(a) Total male	2,12,01,678
	(b) Total female	2,07,45,680
	(c) Urban	69,96,124
	(d) Rural	3,49,51,234
	Decadal Growth rate (2001-2011)	13.97%
3	Density of population per Sq. Km. (2011)	269
10	Number of Districts	30
11	Number of Subdivisions	58
12	Number of Tahasils	316
13	Number of Blocks	314
14	Number of Grama Panchayats	6,234
15	Number of Municipal Corporation	3
16	Number of Municipalities	35
17	Number of Notified Area Councils	65

TABLE NO. 1.2
DISTRICTWISE ADMINISTRATIVE SETUP

Sl.No.	Name of the District	Name of the Sub-Divisions	Number of Tahsils	Number of C.D. Blocks	Number of G.Ps	Number of Urban Local Bodies
1	Angul	4	8	8	209	3
2	Balasore	2	12	12	289	4
3	Bargarh	2	12	12	248	3
4	Bhadrak	1	7	7	193	2
5	Bolangir	3	14	14	285	4
6	Boudh	1	3	3	63	1
7	Cuttack	3	15	14	342	4
8	Deogarh	1	3	3	60	1
9	Dhenkanal	3	8	8	199	3
10	Gajpati	1	7	7	129	2
11	Ganjam	3	22	22	475	18
12	Jagatsinghpur	1	8	8	194	2
13	Jajpur	1	10	10	280	2
14	Jharsuguda	1	5	5	78	3
15	Kalahandi	2	13	13	273	3
16	Kendrapada	1	9	9	230	2
17	Keonjhar	3	13	13	286	4
18	Khurda	2	10	10	168	5
19	Koraput	2	14	14	226	4
20	Malkangiri	1	7	7	108	2
21	Mayurbhanj	4	26	26	382	4
22	Nawarangpur	1	10	10	169	2
23	Nayagarh	1	8	8	179	2
24	Nuapada	1	5	5	109	2
25	Phulbani	2	12	12	153	2
26	Puri	1	11	11	230	4
27	Rayagada	2	11	11	171	3
28	Sambalpur	3	9	9	148	5
29	Sonepur	2	6	6	96	3
30	Sundargarh	3	18	17	262	4
TOTAL		58	316	314	6234	103
SOURCE : Panchayati Raj Department (Legal Section)						

**TABLE NO. 3
POPULATION 2011 CENSUS**

Sl.No	Name of the District	Total	Male	Female	Rural	Urban	Sex Ratio (females per 1000 males)	Density (per sq. km)	Decadal growth rate
1	Angul	12,71,703	6,54,898	6,16,805	10,65,309	2,06,394	942	199	11.55
2	Balasore	23,17,419	11,84,371	11,33,048	20,64,357	2,53,062	957	609	14.47
3	Bargarh	14,78,833	7,48,332	7,30,501	13,29,125	1,49,708	976	253	9.84
4	Bhadrak	15,06,522	7,60,591	7,45,931	13,20,766	1,85,756	981	601	12.95
5	Bolangir	16,48,574	8,31,349	8,17,225	14,51,413	1,97,161	983	251	23.29
6	Boudh	4,39,917	2,20,993	2,18,924	4,19,482	20,435	991	142	17.82
7	Cuttack	26,18,708	13,39,153	12,79,555	18,86,926	7,31,782	955	666	11.87
8	Deogarh	3,12,164	1,58,017	1,54,147	2,89,814	22,350	976	106	13.88
9	Dhenkanal	11,92,948	6,12,597	5,80,351	10,75,714	1,17,234	947	268	11.82
10	Gajapati	5,75,880	2,82,041	2,93,839	5,05,354	70,526	1042	133	10.99
11	Ganjam	35,20,151	17,77,324	17,42,827	27,53,588	7,66,563	981	429	11.37
12	Jagatsinghpur	11,36,604	5,77,699	5,58,905	10,20,710	1,15,894	967	681	7.44
13	Jajpur	18,26,275	9,26,058	9,00,217	16,91,264	1,35,011	972	630	12.43
14	Jharsuguda	5,79,499	2,97,014	2,82,485	3,48,339	2,31,160	951	274	12.56
15	Kalahandi	15,73,054	7,85,179	7,87,875	14,51,130	1,21,924	1003	199	17.79
16	Kandhamal	7,31,952	3,59,401	3,72,551	6,59,788	72,164	1037	91	12.92
17	Kendrapada	14,39,891	7,17,695	7,22,196	13,56,351	83,540	1006	545	10.59
18	Keonjhar	18,02,777	9,07,135	8,95,642	15,49,671	2,53,106	987	217	15.42
19	Khurda	22,46,341	11,66,949	10,79,392	11,65,620	10,80,721	925	799	19.65
20	Koraput	13,76,934	6,77,864	6,99,070	11,51,528	2,25,406	1031	156	16.63
21	Malkangiri	6,12,727	3,03,913	3,08,814	5,63,891	48,836	1016	106	21.53
22	Mayurbhanj	25,13,895	12,53,633	12,60,262	23,21,091	1,92,804	1005	241	13.06
23	Nawarangpur	12,18,762	6,04,046	6,14,716	11,31,057	87,705	1018	230	18.81
24	Nayagarh	9,62,215	5,02,194	4,60,021	8,82,489	79,726	916	247	11.30
25	Nuapada	6,06,490	3,00,307	3,06,183	5,72,490	34,000	1020	157	14.28
26	Puri	16,97,983	8,65,209	8,32,774	14,32,537	2,65,446	963	488	13.00
27	Rayagada	9,61,959	4,69,672	4,92,287	8,14,203	1,47,756	1048	136	15.74
28	Sambalpur	10,44,410	5,29,424	5,14,986	7,33,021	3,11,389	973	158	12.24
29	Sonepur	6,52,107	3,32,897	3,19,210	6,02,175	49,932	959	279	20.35
30	Sundargarh	20,80,664	10,55,723	10,24,941	13,42,031	7,38,633	971	214	13.66
Total		4,19,47,358	2,12,01,678	2,07,45,680	3,49,51,234	69,96,124	978	269	13.97

Source : Director of Census Operation, Orissa

**TABLE NO.4
MONTHWISE STATE AVERAGE RAINFALL**

MONTH	2008 - 09			2009 - 10			2010 - 11		
	ACTUAL	NORMAL	DEPARTURE	ACTUAL	NORMAL	DEPARTURE	ACTUAL	NORMAL	DEPARTURE
APRIL	34.5	36.1	-4	1.0	33.1	-97	6.7	33.1	-80
MAY	44.8	59.6	-25	71.3	63.3	13	94.9	63.3	50
JUNE	340.1	206.1	65	85.4	216.5	-61	150.2	216.5	-31
JULY	319.4	344.6	-7	602.6	339.9	77	290.8	339.9	-14
AUGUST	391.6	364.8	7	283.7	356.0	-20	284.1	356.0	-20
SEPTEMBER	367.4	249.4	47	175.1	231.9	-24	227.9	231.9	-2
OCTOBER	27.2	121.4	-78	110.2	114.7	-4	151.7	114.7	32
NOVEMBER	3.4	28.3	-88	28.1	31.5	-11	35.2	31.5	12
DECEMBER	0.0	5.5	-100	0.0	4.5	-100	37.3	4.5	729
JANUARY	0.0	12.1	-100	0.0	8.6	-100	0.5	8.6	-94
FEBRUARY	0.0	19.8	-100	11.6	0.9	1189	14.2	0.9	1478
MARCH	3.7	24.8	-85	4.9	4.8	2	4.2	4.8	-13
ANNUAL AVG.	127.7	122.7	-39.0	114.5	117.1	72.0	108.1	117.1	170.6

TABLE NO - 5.1

SECRETARIAT ORGANOGRAM
FOOD SUPPLIES AND CONSUMER WELFARE DEPARTMENT

COMMISSIONER-CUM-SECRETARY

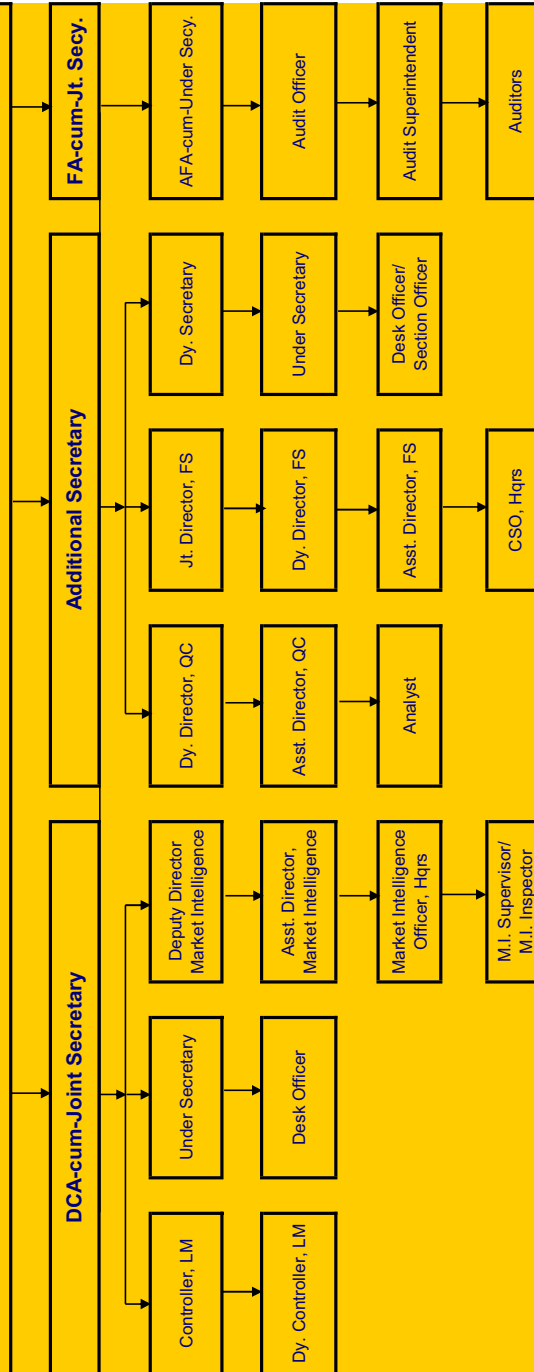


TABLE NO - 5.2

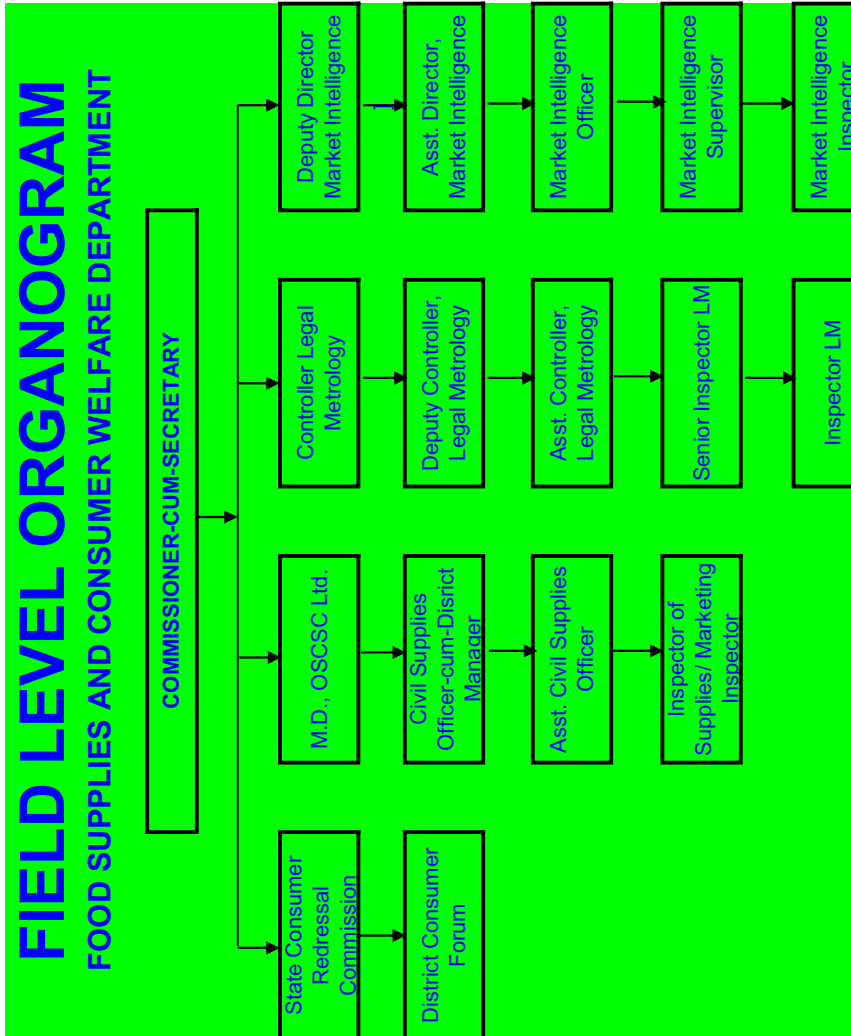


TABLE NO. 5.3									
District wise Sanction Strength of Executive Staff									
District	CSO	ACSO	I/S	MIO	MIS	M I I	ACLM	Sr.ILM	ILM
Angul	1	6	13			1		2	1
Balasore	1	6	16	1	1	1	1	3	1
Baragarh	1	5	17			1		1	1
Bhadrak	1	3	9			1		1	1
Bolangir	1	6	18			1	1	1	1
Boudh	1	1	4			1		1	1
Cuttack	1	9	23	1	1	1	1	6	3
Deogarh	1	1	3			1		1	1
Dhenkanal	1	5	12			1	1	1	2
Gajapati	1	3	9			1		1	1
Ganjam	1	7	34	1	1	2	1	5	3
Jagatsinghpur	1	3	11			1		1	1
Jajpur	1	3	13			1		1	1
Jharsuguda	1	3	7			1		1	1
Kalahandi	1	6	17	1	1	1	1	2	2
Kandhamal	1	4	14			1	1	1	1
Kendrapada	1	3	12			1		1	1
Keonjhar	1	7	21	1	1	1	1	3	3
Khurda	1	7	20	1	1	2		6	5
Koraput	1	4	20	1	1	1	1	1	1
Malkangiri	1	4	9			1		1	1
Mayurbhanj	1	6	32			1	1	1	2
Nayagarh	1	2	9			1		1	
Nowarangpur	1	3	12			1		1	1
Nuapada	1	3	8			1		1	
Puri	1	3	14			1	1	2	1
Rayagada	1	5	12			1		1	1
Sambalpur	1	7	18	1	1	1	1	1	1
Sonepur	1	4	8			1		1	1
Sundargarh	1	7	25	1	1	2	1	6	3
State Hqrs.	4	3	3	1	3	1		2	4
TOTAL	34	139	443	10	12	34	13	58	47
<i>CSO- Civil Supplies Officer ACSO- Assistant Civil Supplies Officer</i> <i>ACLM- Assistant Controller Legal Metrology Sr. ILM- Senior Inspector, Legal Metrology</i> <i>ILM- Inspector, Legal Metrology MIO- Market Intelligence Officer</i> <i>MIS- Market Intelligence Supervisor I/s- Inspector of Supplies</i> <i>M I I - Market Intelligence Inspector</i>									

**TABLE NO. 6.1
MARKET INTELLIGENCE : AN OVERVIEW**

The Organisation

A small but important Directorate is functioning in Food, Supplies and Consumer Welfare Department under direct supervision of Commissioner-cum-Secretary to Government, Food, Supplies and Consumer Welfare Department. The Market Intelligence organisation was transferred from Marketing Directorate of Agriculture Department and merged in the erstwhile Food and Civil Supplies Department in the year 1964 following the Cabinet Resolution dated 02.12.1964. The organisation is an integral part of Food, Supplies and Consumer Welfare Department and it has been discharging its function in right earnest.

Structure

Name of the post	Sanctioned Post	Man in Position	Area of jurisdiction
Deputy Director	1	1	Whole of the State
Asst. Director	1		Whole of the State
Market Intelligence Officer (Hqrs)	1	1	Whole of the State
Market Intelligence Officers in different sectors	9	4	Within their areas of jurisdiction
Market Intelligence Supervisors (Hqrs)	3		Whole of the State
Market Intelligence Supervisors in different sectors	9	1	Within their areas of jurisdiction
Market Intelligence Inspectors	34	1	Within the area as recommended by the district authorities

Objectives

1	To act as a support system to the decision making process in formulating policies.
2	Taking action under EC Act, against unscrupulous traders, profiteers and black marketeers etc.
3	Monitoring of prices and availability of essential commodities in open market through computer network.
4	Making available of market intelligence information to Department of Consumer Affairs, Ministry of Agriculture, Department of Food and Public Distribution, Govt. of India / FCI / State Govt. Departments and Other Agencies / Persons applied through RTI.
5	Study of various economic forces, future market trade and to suggest market intervention to overcome scarcity or any abnormal situation for the benefit of the bonafide consumers of our state.

**TABLE NO. 6.2
DISTRICT WISE SELECTED MARKETS FOR REPORTING
MARKET INTELLIGENCE**

Sl. No.	District	Name of the Selected Centres
1	Angul	Angul
2	Balasore	Balasore
3	Bargarh	Bargarh
4	Bhadrak	Bhadrak
5	Bolangir	Bolangir
6	Boudh	Boudh
7	Cuttack	Cuttack
8	Deogarh	Deogarh
9	Dhenkanal	Dhenkanal
10	Gajapati	Paralakhemundi
11	Ganjam	Berhampur
		Chhatrapur
12	Jagatsinghpur	Jagatsinghpur
13	Jajpur	Jajpur
14	Jharsuguda	Jharsuguda
15	Kalahandi	Bhawaniapatna
16	Kendrapada	Kendrapara
17	Keonjhar	Keonjhar
18	Khurda	Bhubaneswar
		Khurda
19	Koraput	Jeypore
20	Malkangiri	Malkangiri
21	Mayurbhanj	Baripada
22	Nayagarh	Nayagarh
23	Nawarangpur	Nawarangpur
24	Nuapada	Khariar Road
25	Phulbani	Phulbani
26	Puri	Puri
27	Rayagada	Rayagada
28	Sambalpur	Sambalpur
29	Sonepur	Sonepur
30	Sundargarh	Sundargarh
		Rourkela
31	State Hqrs	FS & CW Department

**TABLE NO. 6.3
AREA OF JURISDICTION WITH HEADQUARTERS OF
MARKET INTELLIGENCE OFFICERS/ SUPERVISORS**

Sl. No.	Name of the M.I. Sector	Headquarters	Area Covered
1	BALASORE	BALASORE	1 BALASORE 2 BHADRAK 3 MAYURBHANJ
2	CUTTACK	CUTTACK	1 CUTTACK 2 KENDRAPARA 3 DHENKANAL 4 JAGATSINGHPUR
3	GANJAM	BERHAMPUR	1 GANJAM 2 GAJAPATI 3 PHULBANI
4	KALAHANDI	BHAWANIPATNA	1 KALAHANDI 2 NUAPADA 3 BOLANGIR 4 SONEPUR
5	KEONJHAR	KENONJHAR	1 KEONJHAR 2 JAJPUR
6	KORAPUT	JEYPORE	1 KORAPUT 2 RAYAGADA 3 MALKANGIRI 4 NAWARANGPUR
7	PURI	BHUBANESWAR	1 PURI 2 KHURDA 3 NAYAGARH 4 BOUDH
8	SAMBALPUR	SAMBALPUR	1 SAMBALPUR 2 DEOGARH 3 BARAGARH 4 ANGUL
9	SUNDARGARH	ROURKELA	1 SUNDARGARH 2 JHARSUGUDA

* Food, Supplies & Consumer Welfare Department
Notification No. 14320, dt. 16.4.94.

TABLE NO. 6.4			
Delegation of powers under E.C.Act to M.I., Staff.			
Sl. No.	Name of the Control Order	To whom delegated	Notification No. and Date
1	2	3	4
1	Orissa Kerosene Control Order, 1962	M.I. Officers M.I. Supervisors, M.I. Inspectors	No. 365/83 dated 15.07.83
2	Orissa Rice & Paddy Control Order, 1965	M.I. Officers M.I. Supervisors M.I. Inspectors	No. 374/83 dt. 15.07.83
3	Orissa Declaration of Stocks and Prices of Essential Commodities Order, 1973	Dy. Director,(M.I.) Asst.Director,(MI) M.I. Officers	
4	Orissa Essential Food Stuff (Prevention of Hoarding and Requisition of Stock) Order, 1974	Dy. Director,(M.I.), Asst.Director,(MI) M.I. Officers M.I. Supervisors	No. 150 dt. 28.02.1974
5	Orissa Prohibition of withholding from Sale of Essential Commodities Order, 1977	M.I. Officers M.I. Supervisors M.I. Inspectors	No. 370/83 dt. 15.07.83
6	Orissa Petroleum Products (Sale by Retail Outlets) Order, 1978	Dy. Director,M.I. M.I. Officers	No. 368/83 dt. 15.07.83
7	The Orissa Essential Commodities (Requisitioning of Stocks) Order, 1979	Dy. Director,(M.I.) Asst.Director,(MI) M.I. Officers M.I. Supervisors	No. 168 dt. 31.01.79
8	Orissa Motor Spirit and High Speed Diesel Oil (Maintenance of supplies) Order, 1979	M.I. Officers M.I. Supervisors M.I. Inspectors	No. 366/83 dt. 15.07.83
9	Orissa High Speed Diesel /Dealers licensing) Order, 1979	M.I. Officers M.I. Supervisors	No. 67/83 dt. 15.07.83
10	Orissa Rice and Paddy Procurement (Levy) and restriction on sale and movement Order,1982	M.I. Officers M.I. Supervisors M.I. Inspectors	No. 377/83 dt. 15.07.83
11	The Kerosene (Restriction on use and Fixation of ceiling price) Order, 1993.	Dy. Director,(M.I.) Asst.Director,(MI) M.I. Officers	No. 509(E) dt. 07.07.1994
12	Lubricating Oils and Grease (Processing Supply and Distribution) Order, 1997	Dy. Director,(M.I.)	No. 13327 dt. 06.05.1989
13	Edible Oils packaging (Regulation) Order, 1998	Dy. Director,(M.I.) Asst.Director,(MI) M.I. Officers M.I. Supervisors	No. 25630 dt. 19.09.2000
14	Petroleum Products (Maintenance of Production,Storage and Supply) Order, 1999	Dy. Director,(M.I.) Asst.Director,(MI) M.I. Officers	No. 32522 dt. 16.12.99
15	Solvent, Raffinate and Slip (Acquisition, Sale, Storage and Prevention of use in Automobiles) Order, 2000	Dy. Director,(M.I.), Asst.Director,(MI) M.I. Officers	No. 20013 dt. 27.07.2000
16	The Naphtha (Acquisition,Sale, Storage and Prevention of use in Automobiles) Order, 2000	Dy. Director,(M.I.) Asst.Director,(MI) M.I. Officers	No.20144 dt. 29.07.2000
17	The Liquefied Petroleum Gas (Restriction of Supply and Distribution) Order, 2000	Dy. Director,(M.I.) Asst.Director,(MI) M.I. Officers	No.20151 dt. 29.07.2000
18	Orissa Public Distribution System (Control) Order, 2002 and Orissa Public Distribution System(Control) Order,2008	Dy. Director,(M.I.) Asst.Director,(MI) M.I. Officers M.I. Supervisors M I Inspectors	No. 10618 dt. 23.04.02 and No.7450 dt.29.03.08
19	Motor Spirit and High Speed Diesel (Regulation of Supply, Distribution and prevention of Malpractices) Order, 2005.	Dy. Director,(M.I.) Asst.Director,(MI) M.I. Officers	No.12650 dt. 29.06.2007
20	The Orissa Specified Foodstuffs (Stock holding limit) Order,2010	Dy. Director,(M.I.) Asst.Director,(MI) M.I. Officers M.I. Supervisors M I Inspectors	No.4267 dt. 06.03.2010
21	The Edible Oil Packaging(Regulation) Order,1998	Dy. Director,(M.I.) Asst.Director,(MI) M.I. Officers M.I. Supervisors M I Inspectors	No.25639 dt.19.09.2000

TABLE NO. 6.5
LIST OF REGULATED MARKET COMMITTEES OF ORISSA

Sl.No.	Name of District	Name of the Sub-Division	Name of the R.M.C.
1	Angul	Angul Talcher Athamallik Pallahara	1 Angul 2 Talcher 3 Athamallik 4 Pallahara
2	Balasore	Balasore Nilgiri	5 Balasore 6 Jaleswar 7 Nilgiri
3	Bargarh	Bargarh Padampur	8 Bargarh 9 Atabira 10 Padampur
4	Bhadrak	Bhadrak	11 Bhadrak 12 Chandbali
5	Bolangir	Titilagarh Bolangir	13 Kantabanjhi 14 Bolangir
6	Boudh	Boudh	15 Boudh
7	Cuttack	Cuttack Athagarh Banki	16 Kendupatna 17 Narasinghpur 18 Banki
8	Deogarh	Deogarh	19 Deogarh
9	Dhenkanal	Dhenkanal Hindol Kamakhyanager	20 Dhenkanal 21 Hindol 22 Kamakhyanager
10	Gajapati	Parlakhemundi	23 Parlakhemundi
11	Ganjam	Berhampur Chhatrapur Bhanjanagar	24 Digapahandi 25 Hinjilicut 26 Bhanjanagar
12	Jagatsinghpur	Jagatsinghpur	27 Jagatsinghpur
13	Jajpur	Jajpur	28 Jajpur
14	Jharsuguda	Jharsuguda	29 Jharsuguda
15	Kalahandi	Bhawanipatna	30 Bhawanipatna 31 Kesinga 32 Junagarh
16	Phulbani	Baliguda Phulbani	33 Tikabali 34 Phulbani
17	Kendrapara	Kendrapara	35 Kendrapara

Sl.No.	Name of District	Name of the Sub-Division	Name of the R.M.C.
18	Keonjhar	Anandpur Keonjhar Champua	36 Anandpur 37 Keonjhar 38 Champua
19	Khurda	Bhubaneswar Khurda	39 Jatni 40 Balugaon
20	Koraput	Koraput Jeypore	41 Koraput 42 Jeypore
21	Malkangiri	Malkangiri	43 Malkangiri
22	Mayurbhanj	Baripada (Sadar) Rairangpur (Baman Ghati) Udala(Kaptipada) Karanjia (Panchtir)	44 Baripada 45 Betnoti 46 Udala 47 Karanjia
23	Nayagarh	Nayagarh	48 Bahadajhola
24	Nowarangpur	Nowarangpur	49 Nowarangpur
25	Nuapada	Nuapada	50 Khariar Road
26	Puri	Puri	51 Sakhigopal 52 Nimapara
27	Rayagada	Rayagada Gunpur	53 Rayagada 54 Gunpur
28	Sambalpur	Sambalpur Rairakhol Kuchinda	55 Sambalpur 56 Rairakhol 57 Kuchinda
29	Sonepur	Sonepur Birmaharajpur	58 Dungleipalli 59 Birmaharajpur
30	Sundargarh	Sundargarh Panposh Bonaigarh	60 Sargipalli 61 Panposh 62 Bonaigarh

Source : Co-operation Department

TABLE No. 7.1

Average Quantity (in Kg.) of consumption of cereals, pulses and edible oils per person for a period of 30 days in Urban & Rural areas of Orissa.

ITEMS	RURAL	URBAN
RICE	13.13	10.33
WHEAT	0.49	2.16
TOTAL CEREALS	13.76	12.52
TOTAL PULSES*	0.50	0.70
TOTAL EDIBLE OIL*	0.29	0.42
SUGAR*	0.35	0.53
POTATO*	1.81	1.83
ONION*	0.42	0.58

**Source:- NSS 61st Round (July 2004 to June 2005)*

Average Value (in Rs.) of consumption of food items per person for a period of 30 days in Urban & Rural areas of Orissa.

ITEMS	RURAL	URBAN
RICE	127.73	125.92
WHEAT	7.95	37.51
TOTAL CEREALS	136.57	163.88
TOTAL PULSES	16.13	30.09
EDIBLE OILS	21.49	37.46
SUGAR	7.47	11.60
POTATO*	11.93	12.75
ONION*	3.25	4.25

Source:- NSS 64th Round (July 2007 to June 2008)

**Source:- NSS 61st Round (July 2004 to June 2005)*

TABLE NO. 7.2 CONSUMPTION/REQUIREMENT OF SOME ESSENTIAL COMMODITIES							
PROVISIONAL POPULATION 2011 : 41,947,358							
URBAN 69,96,124							
RURAL 3,49,51,234							
Commodities	Per Capita Consumption for 30 days (in kg.)		Per Capita Consumption per Annum (in kg.)		Consumption per month (in MT)	Total Consumption per year (in MT)	Nearest to lakh MT.
	URBAN	RURAL	URBAN	RURAL			
RICE	10.33	13.13	123.96	157.56	5,31,179.66	63,74,155.96	63.74
WHEAT	2.16	0.49	25.92	5.88	32,237.73	3,86,852.79	3.87
TOTAL CEREALS	12.52	13.76	150.24	165.12	5,68,520.45	68,22,245.43	68.22
SUGAR	0.53	0.35	6.41	4.22	16,038.76	1,92,465.18	1.92
PULSES	0.70	0.50	8.44	5.96	22,289.04	2,67,468.46	2.67
EDIBLE OILS	0.42	0.29	5.05	3.42	12,906.47	1,54,877.64	1.55
POTATO	1.83	1.81	21.97	21.72	76,071.64	9,12,859.64	9.13
ONION	0.58	0.42	6.90	5.08	18,807.14	2,25,685.72	2.26

(House hold sectors only)

Total pulses comprises of Arhar Dal - 35%, Mung Dal - 50%, Others - 15%

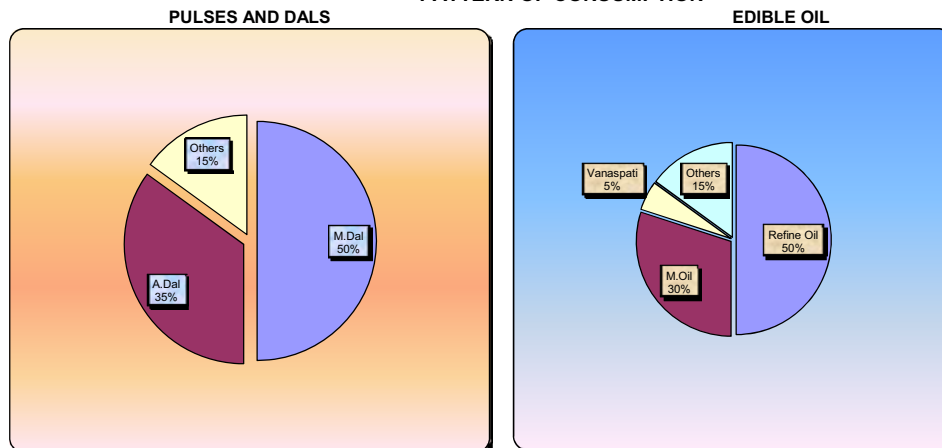
So Arhardal =93,000 MT, Mung Dal = 1,34,000 MT, Others = 40,000 MT.

Total Edible Oil comprises Mustard Oil = 30%, Refined Oil =50% Other Edible Oils = 15%, Vanaspati =5%

So M.Oil = 46,000 MT, Refined Oil = 78,000 MT, Others = 23,000 MT Vanaspati = 8,000 MT.

This calculation is made of the basis of N.S.S. Report (61th Round)

PATTERN OF CONSUMPTION



Source : Last years Arrival

**TABLE NO. 8.1
SOWING AND HARVESTING PERIOD OF CROPS**

SEASON	PERIOD	SOWING PERIOD	HARVESTING PERIOD	PRINCIPAL CROP
Kharif	May to middle of Oct.	Generally at the beginning of the South-west monsoon - May to July	At the end of the South-west monsoon - Sept. To Oct. (may continue upto Nov. in some cases)	Rice, Jowar, Bajra, Maize, Ragi, Tur, Mung, Castor, Urad, Sugarcane, Groundnut, Sesamum, Tobacco, Jute and Cotton.
Zaid Kharif	August to January	August to September	December to January	Rice, Jowar, Rapeseed & Mustard, Cotton, Toria and other Oilseeds.
Rabi	Middle of October to middle of April.	At the beginning of the cold weather - October to December	February to April (may continue till May in some cases).	Wheat, Barly, Gram, Linseed, Mustard, Masur, Peas, Oats and Potatoes.
Zaid Rabi	Beginning of February to beginning of May	At the beginning of hot weather - February to March	Middle of April to May (may continue upto June in some cases).	Water melons, Toria, Jowar and Maize for fodder.

Source : Directorate of Economics & Statistics, Department of Agriculture & Co-op., Govt. of India.

TABLE NO. 8.2 SOWING, HARVESTING AND PEAK MARKETING PERIOD OF PRINCIPAL CROPS IN ORISSA				
Season	Crops	Sowing period	Harvesting period	Peak marketing period
KHARIF	Paddy	May - August	September-December	November - February
	Ragi	May-July	August-November	September-November
	Mung	June-August	August-October	September-November
	Biri	June-August	August-October	September-November
	Groundnut	June-July	September-November	October-December
RABI	Paddy	December-February	April-May	May-July
	Wheat	November-December	February-April	March-May
	Mung	October-February	January-May	December-April
	Biri	October-February	January-May	December-April
	Kulthi	September-November	December-January	January-February
	Groundnut	October-February	January-May	February-May
	Mustard	September-December	December-March	January-April
	Potato	October-December	January-March	February-March
	Onion	November-December	March-April	March-April

Source: Directorate of Agriculture & Food Production, Orissa

TABLE NO. 8.3 CROP MARKETING YEAR		
Name of crop	Duration of Marketing Year	Duration of peak marketing period
Rice	October to September	November - February
Wheat	April to March	May - June
Sugarcane	October to September	December - March
Kharif Oilseeds	November to October	November - February
Rabi Oilseeds	April to March	April - June

Note : The beginning of the period denotes the time when generally the crop arrives in the market.

Source : Directorate of Economics & Statistics, Department of Agriculture & Co-op., Govt. of India.

TABLE NO. 8.4 CONVERSION RATIO BETWEEN THE RAW MATERIAL AND THE PROCESSED PRODUCTS			
Commodity	Ratio	Commodity	Ratio
Rice		Cocunut	
Rice (Cleaned) production	2/3 of paddy production (67-68 %)	Copra to nuts	One tonne of copra = 6773 nuts
		Oil to copra crushed	38%
Groundnut		Sugar	
Kernel to nuts in shell	70%	Gur from cane crushed	10%
Oil to nuts in shell	28%	Crystal sugar from gur refined (Gur-refineries)	62.4%
Oil to kernel crushed	40%	Crystal sugar from cane crushed (Cane factories)	9.97%
Cake to kernel crushed	60%	Khandsari sugar from gur refined	37.5%
		Molasses from cane crushed	3.5%
Sesamum		Cane thrash from cane harvested	
Oil to seeds crushed	40%		
Cake to seeds crushed	60%		
Rapeseed & Mustard			
Oil to seeds crushed	33%		
Cake to seeds crushed	67%		

Source : Directorate of Economics & Statistics, Department of Agriculture & Co-op., Government of India.

TABLE NO. 8.5
Crop Season for Pulses

Sl. No.	Name	Crop Season	Main Growing States	Percentage of Total Production
1	Gram	Rabi	M.P., Rajasthan , U.P., Haryana	32
2	Masoor	Rabi	MP,UP,Bihar	6
3	Arhar	Rabi	MP,UP,Bihar	18
4	Arhar	Kharif	Maharashtra.,Karnataka, A.P.,Haryana,Gujrat	18
5	Urad	Kharif	Rajasthan,Maharashtra, A.P.,Karnataka,West Bengal,Orissa	14
6	Moong	Kharif/Rabi	Maharashtra,Rajasthan, A.P.,Karnataka,Bihar,Tamil Nadu,U.P.	13
7	Others*	Rabi/Kharif	Maharashtra,A.P.,Rajasthan, U.P.,M.P.,Bihar	17

* Includes Rajmah, Moth, Lobia, and Peas etc.

Crop Season	Sowing Period	Harvesting Period
Rabi	September - October	February - March
Kharif	June - July	September - October

Consumption Pattern

Pulses, largely consumed in whole and processed form are Gram (Desi and Kabuli), Arhar (Tur), Urad, Moong, Masoor, Peas and Rajmah. Gram is consumed in most parts of country, Arhar in Western, Southern and Northern areas, Moong and Urad in Northern, Southern and Central parts and Masoor in Eastern , North-Eastern and South India.

TABLE NO. 8.6 PRODUCTION OF DIFFERENT CROPS IN ORISSA FROM 2000-2001 TO 2009-10												
Sl.No.	Crops	2001-02	2002-03	2003-04	2004-05	2005-06	2006-07	2007-08	2008-09	2009-10	(in 000 MT)	
		2010-11(P)	2010-11(P)	2010-11(P)	2010-11(P)	2010-11(P)	2010-11(P)	2010-11(P)	2010-11(P)	2010-11(P)	2010-11(P)	2010-11(P)
1	Rice	7148.98	3243.60	6734.00	6537.00	6963.00	6928.00	7655.02	6915.96	7254.66	6828.36	
2	Wheat	27.26	18.91	25.18	21.83	23.67	23.78	27.86	30.22	43.00	27.48	
3	Ragi	144.59	127.49	139.71	142.01	141.81	144.25	165.29	163.83	170.50	170.47	
4	Mung	239.58	151.50	200.14	211.02	269.11	293.13	306.05	341.79	387.14	366.70	
5	Biri	225.96	134.28	184.41	184.95	218.32	242.83	254.70	276.29	327.96	270.55	
6	Groundnut	333.55	217.23	336.68	351.28	342.39	378.91	428.89	458.55	532.27	462.99	
7	Sesamum	103.90	43.80	76.50	88.38	103.79	105.95	101.65	128.08	112.43	103.21	
8	Rapeseed & Mustard	39.21	25.33	32.51	29.01	39.63	40.71	41.37	42.10	86.00	41.58	
9	Potato	78.40	70.32	75.82	16.51	16.44	79.31	94.25	75.58	278.87	-	
10	Onion	172.53	238.79	240.34	241.85	243.87	260.00	262.37	278.87	387.00	-	

Source : Directorate of Agri. & Food Prod'n., Orissa.

TABLE NO. 8.7
DISTRICT-WISE PRODUCTION OF PADDY AND RICE IN ORISSA

DISTRICT	2005-06		2006-07		2007-08		2008 - 09		2009 - 10(P)		AVERAGE	
	PADDY	RICE	PADDY	RICE	PADDY	RICE	PADDY	RICE	PADDY	RICE	PADDY	RICE
Angul	263.42	179.12	230.14	154.19	133.60	90.85	200.12	136.08	200.72	136.49	205.60	139.35
Balasure	567.40	385.83	987.38	364.15	589.55	400.90	524.75	356.83	582.45	396.07	650.31	380.75
Baragarh	833.14	566.53	915.01	613.06	960.89	663.41	945.83	643.16	977.24	664.52	926.42	628.14
Bhadrak	509.84	346.69	451.58	302.56	465.15	316.30	514.11	349.59	564.67	383.98	501.07	339.83
Bolangir	456.00	310.08	477.92	320.20	590.25	401.37	465.17	316.32	479.97	326.38	493.86	334.87
Boudh	157.62	107.18	169.60	113.63	161.88	110.08	139.04	94.55	129.40	87.99	151.51	102.69
Cuttack	455.63	309.83	310.80	208.24	382.64	260.20	282.42	192.05	300.87	204.59	346.47	234.98
Deogarh	102.76	69.87	101.22	67.82	89.15	60.62	86.88	59.08	88.45	60.15	93.69	63.51
Dhenkanal	344.56	234.30	245.80	164.69	333.96	227.09	276.64	188.12	284.75	193.63	297.14	201.57
Gajapati	71.24	48.44	103.09	69.07	111.98	76.15	65.10	44.27	63.12	42.92	82.91	56.17
Ganjam	514.23	349.68	865.47	579.86	928.88	630.28	708.28	481.63	723.96	492.29	747.76	506.75
Jagatsinghpur	256.40	174.35	207.00	138.69	234.39	159.38	267.34	181.79	279.55	190.09	248.94	168.86
Jajpur	362.78	246.69	270.65	181.33	309.32	210.34	316.81	215.43	326.13	221.77	317.14	215.11
Jharsuguda	154.31	104.93	170.89	114.50	154.95	105.37	152.90	103.97	149.10	101.39	156.43	106.03
Kalahandi	464.97	316.18	438.51	293.80	539.01	366.52	522.31	355.17	545.57	370.99	502.07	340.53
Kandhamal	109.48	74.45	115.48	77.37	110.29	75.00	110.41	75.08	107.07	72.81	110.56	74.94
Kendrapada	355.19	241.53	227.42	152.37	296.73	201.77	299.81	203.87	310.15	210.90	297.86	202.09
Keonjhar	428.10	291.10	395.42	264.93	508.99	346.11	414.93	282.15	423.70	288.12	434.23	294.48
Khurda	312.38	212.42	297.59	199.38	267.68	182.02	243.45	165.55	255.19	173.53	275.26	186.58
Koraput	337.57	229.54	334.67	224.23	371.20	252.42	317.40	215.83	343.51	233.59	340.87	231.12
Malkangiri	195.24	132.76	185.77	127.47	217.68	148.02	167.69	114.03	147.33	100.18	182.74	124.49
Mayurbhanj	704.79	479.26	748.40	501.43	857.98	583.43	809.84	550.69	831.39	565.35	790.48	536.03
Nayagarh	239.79	163.05	227.98	152.75	265.44	180.50	198.84	135.21	198.48	134.97	226.11	153.30
Nowrangpur	308.72	209.93	326.50	218.76	344.43	234.22	292.08	198.61	303.34	206.27	315.02	213.56
Nuapada	156.14	106.18	179.69	120.39	301.51	205.03	225.03	153.02	228.64	155.48	218.20	148.02
Puri	429.96	292.38	368.01	246.57	392.91	267.18	307.60	209.17	390.21	265.34	377.74	256.13
Rayagada	108.25	73.61	164.58	110.27	198.02	134.65	147.49	100.29	154.52	105.07	154.57	104.78
Sambalpur	445.71	303.08	437.28	292.98	478.72	325.53	503.19	342.17	501.03	340.70	473.19	320.89
Sonepur	381.98	259.74	417.12	279.47	379.75	258.23	368.27	250.42	341.42	232.17	377.71	256.01
Sundargarh	364.89	248.13	413.36	276.96	455.46	309.71	448.60	305.05	436.69	296.95	423.80	287.36
TOTAL	10392.49	7066.89	10784.33	6931.12	11430.40	7772.67	10322.33	7019.18	10668.62	7254.66	10719.64	7208.91

Source : Directorate of Economics and Statistics

District	2006-2007			2007-2008			2008-2009			2009-2010			2010-2011(31.03.2011)			(Fig. in MT)
	Proc. of Paddy	Target in Rice	Delivery in Rice	Proc. of Paddy	Target in Rice	Delivery in Rice	Proc. of Paddy	Target in Rice	Delivery in Rice	Proc. of Paddy (30.9.10)	Target in Rice	Delivery in Rice	Proc. of Paddy	Target in Rice	Delivery in Rice	
Angul	15173	18300	9697	17307	28500	11196	23770	21500	4832	28973	21500	18327	23624	22500	18327	
Balasore	141660	114660	84624	159042	106000	105917	152476	120500	55726	74494	120500	45935	70780	133000	45935	
Barangarh	713903	566600	474366	757394	492000	508214	444125	550000	212989	804637	550000	548860	470902	408000	548860	
Bhadrak	100058	109410	63400	137278	91000	100314	117880	121000	30629	144344	121000	96953	120788	168000	96953	
Bolangir	163287	77250	107009	186442	137000	123408	192223	153700	50087	291416	153700	180587	274534	322000	180587	
Boudh	25646	18960	16168	27353	18000	16508	29469	19200	10371	59438	19200	38061	51895	28000	38061	
Cuttack	19032	28300	11980	61911	33500	34634	34412	51400	12344	80442	51400	49196	57721	56000	49196	
Deogarh	5941	5700	3463	11168	6000	7568	15196	11500	5131	28512	11500	17219	21146	17000	17219	
Dhenkanal	23871	21800	15199	33508	28500	22567	41075	32600	15556	58333	32600	37680	38295	39000	37680	
Gajapati	10301	6350	5688	26158	15500	16527	25129	21050	14268	30199	21050	20859	22785	25000	20859	
Ganjam	200854	143500	116783	255117	172000	164402	243961	193000	82169	262680	193000	170925	204681	193000	170925	
Jagatsinghpur	14731	16100	9551	19584	16000	12702	19003	37250	1315	23857	37250	16223	14997	17000	16223	
Jajpur	23890	30500	15642	63432	31800	42487	47073	52200	16125	65644	52200	42202	50623	47000	42202	
Jharsuguda	33305	28750	21929	30241	27000	20535	44438	31500	13178	44626	31500	25930	42298	28000	25930	
Kalahandi	405152	316400	250727	423285	290000	284670	333074	260000	145162	419461	260000	270057	284230	320000	270057	
Kandhamal	631	800	416	531	1200	356	2696	3200	1486	2991	3200	2034	2839	3000	2034	
Kendrapada	11186	17800	6677	17273	20500	11002	14408	45250	7000	62922	45250	39901	45715	39000	39901	
Keonjhar	17922	18330	11329	24365	21500	15633	47443	22000	14881	58262	22000	38152	44160	50000	38152	
Khurda	47380	47600	31220	80356	48500	54404	77152	82000	23225	80447	82000	52094	61431	56000	52094	
Koraput	116132	73650	71997	116747	72000	76024	83213	77000	44053	116673	77000	77035	98469	84000	77035	
Malkangiri	49118	34220	26526	61844	22500	40561	64961	46500	19717	66604	46500	38356	58554	50000	38356	
Mayurbhanj	54486	38100	30133	63701	39000	41193	55429	55000	15228	67994	55000	41805	54212	48000	41805	
Nayagarh	61094	37890	34998	63509	34000	39518	38594	62600	13254	97309	44850	64671	86871	78500	64671	
Nowrangpur	35659	39300	23387	57266	35000	38780	58266	44850	21358	67122	62600	45400	33089	45000	45400	
Nuapada	146998	114650	93381	170637	98000	114989	124972	135000	47132	132111	135000	81757	119903	122000	81757	
Puri	32495	33350	20168	45672	40000	30622	23769	69050	9672	49502	69050	33192	25250	34000	33192	
Rayagada	53901	40400	30921	84392	38500	54275	82733	58800	39536	117702	58800	76083	92476	62000	76083	
Sambalpur	327899	299100	211245	341070	230000	221908	296812	196700	104774	344717	196700	217503	242697	255000	217503	
Sonepur	243525	173700	153377	254890	151500	170258	183158	184500	58667	232582	184500	153529	153390	150000	153529	
Sundargarh	28475	20360	18794	43847	31000	28847	71435	42000	21296	64938	42000	41232	56193	50000	41232	
TOTAL	31,23,695	24,91,830	19,70,795	36,35,320	23,72,000	24,10,029	29,81,145	28,00,850	11,11,161	39,74,932	28,00,850	25,81,699	29,24,548	29,50,000	25,81,699	

Source : P & L Section

TABLE NO. 9.1
SUPPORT PRICE OF PADDY SINCE 1974-75
(Rs.per Qtl.)

Year	PADDY		
	COMMON	FINE	SUPERFINE
1974-75	74.00	78.00	82.00
1975-76	74.00	78.00	82.00
1976-77	74.00	78.00	82.00
1977-78	77.00	81.00	85.00
1978-79	85.00	89.00	93.00
1979-80	95.00	99.00	103.00
1980-81	105.00	109.00	113.00
1981-82	115.00	119.00	123.00
1982-83	122.00	126.00	130.00
1983-84	132.00	136.00	140.00
1984-85	137.00	141.00	145.00
1985-86	142.00	146.00	150.00
1986-87	146.00	150.00	154.00
1987-88	150.00	154.00	158.00
wef 1.05.88	160.00	170.00	180.00
1988-89	160.00	170.00	180.00
1989-90	185.00	195.00	205.00
1990-91	205.00	215.00	225.00
1991-92	230.00	240.00	250.00
1992-93	270.00	280.00	290.00
1993-94	310.00	330.00	350.00
1994-95	340.00	360.00	380.00
1995-96	360.00	375.00	395.00
1996-97	380.00	395.00	415.00
1997-98	415.00	435.00	455.00
Year	PADDY		
	COMMON	GRADE - A	
1997-98	415.00	445.00	
1998-99	440.00	470.00	
1999-2000	490.00	520.00	
2000-2001	510.00	540.00	
2001-2002	530.00	560.00	
2002-2003 *	530.00	560.00	
2003-2004	550.00	580.00	
2003-04(URS)	528.00 **	557.00 **	
2004-2005	560.00	590.00	
2004-05(URS)	538.00	566.00	
2005-2006	570.00	600.00	
2005-06(URS)	547.00	576.00	
2006-2007#	580.00	610.00	
2006-07(URS)	557.00	586.00	
2007-2008\$	645.00	675.00	
2008-2009^	850.00	880.00	
2009-2010 !	950.00	980.00	
2010-2011	1000.00	1030.00	
2011-2012	1080.00	1110.00	

* Rs. 20/- extra as special drought relief up to 31.03.2003
** Under relaxed specification # Rs.40/- Bonus per Qtl.in KMY2006-07
\$ Rs.100/- per Qtl. in KMY 2007-08 ^ Rs.50/- per Qtl. in KMY2008-09
! Rs.50/- per Qtl. In KMY 2009-10

TABLE NO. 9.2 MINIMUM SUPPORT PRICE OF AGRICULTURAL COMMODITIES AS FIXED BY GOVT. OF INDIA												
Commodity	Variety	2003-2004	2004-2005	2005-2006	2006-2007	2007-2008	2008-2009	2009-2010	2010-2011	Rs/per Qtl.		
												Remark
PADDY	COMMON	550.00	560.00	570.00	580.00	645.00	850.00	1,000.00	1,000.00	1,000.00	1,000.00	Kharrif (Oct - Sep)
	GRADE-A	580.00	590.00	600.00	610.00	675.00	880.00	1,030.00	1,030.00	1,030.00	1,030.00	Kharrif (Oct - Sep)
WHEAT	F.A.Q	630.00	640.00	650.00	750.00	1,000.00	1,000.00	1,100.00	1,120.00	1,120.00	1,120.00	Rabi (Apr - Mar)
JOWAR	F.A.Q	505.00	515.00	525.00	540.00	600.00	840.00	860.00	900.00	900.00	900.00	Kharrif (Oct - Sep)
BAJRA	F.A.Q	505.00	515.00	525.00	540.00	600.00	840.00	840.00	880.00	880.00	880.00	Kharrif (Oct - Sep)
MAIZE	F.A.Q	505.00	525.00	540.00	540.00	620.00	840.00	840.00	880.00	880.00	880.00	Kharrif (Oct - Sep)
RAGI	F.A.Q	505.00	515.00	525.00	540.00	600.00	915.00	915.00	965.00	965.00	965.00	Kharrif (Oct - Sep)
ARHAR	F.A.Q	1370.00	1390.00	1400.00	1410.00	1550.00	2,000.00	2,300.00	3,000.00	3,000.00	3,000.00	Kharrif (Oct - Sep)
MUNG	F.A.Q	1370.00	1410.00	1520.00	1520.00	1,700.00	2,520.00	2,760.00	3,170.00	3,170.00	3,170.00	Kharrif (Oct - Sep)
URAD	F.A.Q	1370.00	1410.00	1520.00	1520.00	1,700.00	2,520.00	2,520.00	2,900.00	2,900.00	2,900.00	Kharrif (Oct - Sep)
GRAM	F.A.Q	1400.00	1425.00	1435.00	1445.00	1,600.00	1,730.00	1,760.00	2,100.00	2,100.00	2,100.00	Rabi (Apr - Mar)
MUSTARD / RAPESEED	F.A.Q	1600.00	1700.00	1715.00	1715.00	1,800.00	1,830.00	1,830.00	1,850.00	1,850.00	1,850.00	Rabi (Apr - Mar)
G.NUT(SHELL)	F.A.Q	1400.00	1500.00	1520.00	1520.00	1,550.00	2,100.00	2,100.00	2,300.00	2,300.00	2,300.00	Kharrif (Oct - Sep)
NIGER SEED	F.A.Q	1155.00	1180.00	1200.00	1220.00	1,240.00	2,405.00	2,405.00	2,450.00	2,450.00	2,450.00	Kharrif (Oct - Sep)
SESAMUM	F.A.Q	1485.00	1500.00	1550.00	1560.00	1,580.00	2,750.00	2,850.00	2,900.00	2,900.00	2,900.00	Kharrif (Oct - Sep)
SUNFLOWER	F.A.Q	1250.00	1340.00	1500.00	1500.00	1,510.00	2,215.00	2,215.00	2,350.00	2,350.00	2,350.00	Kharrif (Oct - Sep)
SOYABEAN	BLACK	840.00	900.00	900.00	900.00	910.00	1,350.00	1,350.00	1,400.00	1,400.00	1,400.00	Kharrif (Oct - Sep)
	YELLOW	930.00	1000.00	1010.00	1020.00	1,050.00	1,390.00	1,390.00	1,440.00	1,440.00	1,440.00	Kharrif (Oct - Sep)
COTTON	MSL	1725.00	1760.00	1760.00	1770.00	1,800.00	2,500.00	2,500.00	2,500.00	2,500.00	2,500.00	Kharrif (Oct - Sep)
	LSL	1725.00	1760.00	1760.00	1770.00	2,030.00	3,000.00	3,000.00	3,000.00	3,000.00	3,000.00	Kharrif (Oct - Sep)

TABLE NO. 9.3
PROCUREMENT PRICE, ISSUE PRICE & CONSUMER PRICE OF LEVY RICE,
WHEAT, SUGAR AND KEROSENE

(Rs. per quintal)

PROCUREMENT PRICE OF RICE				
YEAR (OCT - SEP)	Raw Rice		Boiled Rice	
	Common	Gr. A	Common	Gr. A
2002-2003	938.30	986.30	924.70	972.00
2003-2004	965.70	1013.70	952.10	999.10
2004-2005	965.70	1013.70	952.10	999.40
2005-2006	965.70	1013.70	965.30	1011.60
2006-2007	1041.20	1088.30	1041.80	1088.20
2007-2008	1199.30	1245.00	1196.90	1241.90
2008-2009	1440.60	1486.30	1434.70	1479.70
2009-2010	1606.60	1652.20	1598.40	1643.40
2010-2011	1618.70	1664.30	1610.50	1655.50
CUSTOM MILLED PRICE OF RICE				
2004-2005(FAQ)	1052.37	1102.11	1036.91	1085.48
2004-2005(URS)	1045.28	1093.14	1029.79	1076.50
2005-2006(FAQ)	1036.29	1084.47	1028.21	1075.24
2005-2006(URS)	1066.00	1115.56	1057.70	1106.07
2006-2007(FAQ)	1155.06	1204.83	1145.23	1193.83
2006-2007(URS)	1149.19	1198.80	1139.50	1187.83
2007-2008(FAQ)	1291.62	1339.99	1278.76	1325.98
2007-2008(URS)	1312.93	1360.87	1298.84	1346.63
2008-2009(FAQ)	1589.41	1638.21	1569.15	1616.80
2008-2009(URS)	1687.86	1738.17	1666.87	1717.98
2009-2010(FAQ)	1784.32	1833.57	1759.92	1808.01
2009-2010(URS)	1776.40	1824.88	1762.59	1799.90
2010-2011(FAQ)	1821.16	1870.34	1795.87	1843.88
DECENTRALISED PROCUREMENT (DCP) PRICE				
2006-2007(FAQ)	1248.35	1300.38	1238.04	1288.86
2006-2007(URS)	1242.18	1294.04	1232.02	1282.65
2007-2008(FAQ)	1427.50	1478.35	1413.32	1462.99
2007-2008(URS)	1417.87	1468.24	1403.91	1453.10
2008-2009(FAQ)	1710.14	1761.41	1698.76	1738.80
2008-2009(URS)	1687.86	1736.17	1666.87	1715.98
2009-2010(FAQ)	1809.30	1858.77	1794.69	1833.00
2009-2010(URS)	1894.85	1945.83	1869.60	1919.38
2010-2011(FAQ)	1955.13	2006.55	1928.60	1978.83
Commodities	Central Issue Price (Rs. per qntl)	Consumers' Price (Rs. per kg.)	With effect from /Year	
Rice Common APL	905.00	10.05	1999-2000	
	905.00	10.05	2000-2001	
	830.00	9.25	21.07.2001	
	730.00	8.20	01.04.2002	
	730.00	8.23	03.05.2002	
Rice Gr. A APL	830.00	9.30	01.07.2002	
	1180.00	12.90	1999-2000	
	1180.00	12.90	2000-2001	
	1130.00	12.40	01.08.2000	
Rice Common / Grade A BPL	1130.00	12.45	14.02.2001	
	350.00	2.00/4.00	1999-2000	
	590.00	5.00/6.50	2000-01 (up to 14.2.01)	
	565.00	6.30	14.02.2001 for 171 Non-ITDP Block	
	-	4.75	14.02.2001 for 143 ITDP Block	
ANTYODAYA Rice	565.00	2.00	02.08.2008	
SC/ST Rice	565.00	2.00	02.08.2008	
Welfare Inst. Rice	565.00	6.30		
Wheat APL	699.00	7.80	16.01.2000	
	900.00	9.95	01.04.2000	
	830.00	9.20	01.08.2000	
	830.00	9.25	14.02.2001	
	610.00	6.95	21.07.2001	
	510.00	5.85	01.04.2002	
	510.00	5.95	03.05.2002	
	610.00	7.00	01.07.2002	
BPL	450.00	5.20	1999-2000	
	450.00	5.20	01.04.2000	
	415.00	4.85	01.08.2000	
	415.00	4.90	14.02.2001	
Sugar	1258.38	13.00	1999-2000	
	1258.38	13.00	2000-2001	
	1296.40	13.50	01.03.2002	
	1337.75	13.50	01.05.2002 onwards	
Kerosene	-	3.03 - 3.20	1999-2000	
	-	5.75 - 7.50	2000-2001	
	-	8.61 - 9.82	2001-2002 onwards	
	-	12.22-13.15	01.07.2010 onwards	

* Rs. 2/- Rice for 143 Blocks Income <= 11,000/- per annum and Rs. 4/- Rice for 171 Non-ITDP Blocks with income <= 6000 per annum & to family above poverty line in 143 Blocks.

** Rice @ Rs.2.00 per Kg. is supplied to all BPL families, all APL families of KBK districts and to all Antyodaya card holders @ 25 Kg. and 35 Kg. respectively per month.

Source : E, C, F, S and P & L Section

TABLE NO. 9.4				
ISSUE PRICE OF RICE, WHEAT, SUGAR AND KEROSENE TO SAs, KEROSENE				
WHOLESALERS/		SUB-WHOLESALERS AND PD RETAILERS		
(Rs. per quintal)				
COMMODITIES	PARTICULARS	ISSUE PRICE TO STORAGE AGENTS	ISSUE PRICE TO P D RETAILERS	CONSUMER PRICE
BPL RICE	Within 10 Kms. From SA depot	173.50	180.00	2.00
	Beyond 10 Kms. From SA depot	168.50	175.00	2.00
	For Retail points in inaccessible/hilly areas	163.50	170.00	2.00
AAY RICE	Within 10 Kms. From SA depot	175.50	180.00	2.00
	Beyond 10 Kms. From SA depot	170.50	175.00	2.00
	For Retail points in inaccessible/hilly areas	165.50	170.00	2.00
APL RICE	Within 10 Kms. From SA depot	903.86	912.00	9.30
	Beyond 10 Kms. From SA depot	894.86	895.00	9.30
	For Retail points in inaccessible/hilly areas	886.86	895.00	9.30
SC / ST HOSTEL RICE	BULK CONSUMERS	193.50	-	-
W I RICE		613.70	620.00	
APL WHEAT	Within 10 Kms. From SA depot	674.72	682.00	7.00
	Beyond 10 Kms. From SA depot	665.75	673.00	7.00
	For Retail points in inaccessible/hilly areas	657.75	665.00	7.00
SUGAR	All over state	1329.38	1331.63	13.50
KEROSENE				12.22 - 13.15 per litre

TABLE NO. 10.1
NUMBER OF FAIR PRICE SHOPS FUNCTIONING IN THE STATE

CATEGORY	As on 31.03. 2009		
	URBAN	RURAL	TOTAL
PRIVATE	3499	14125	17624
CO-OPERATIVE	130	658	788
O.S.C.S.C. (Maitry)	38	14	52
Municipality/NAC	12	0	12
Grampanchayat		3466	3466
SHG	657	7346	8003
TOTAL	4336	25609	29945

CATEGORY	As on 31.03. 2010		
	URBAN	RURAL	TOTAL
PRIVATE	3357	13909	17266
CO-OPERATIVE	133	635	768
O.S.C.S.C. (Maitry)	40	14	54
Municipality/NAC	12	0	12
Grampanchayat		3532	3532
SHG	475	7325	7800
TOTAL	4017	25415	29432

CATEGORY	As on 31.03. 2011		
	URBAN	RURAL	TOTAL
Private	3807	13085	16892
Co-operatives	133	586	719
O.S.C.S.C. (Maitry)	41	17	58
Municipality/NAC	11	0	11
Grampanchayat		3645	3645
SHG	530	7098	7628
TOTAL	4522	24431	28953

Source : F.S. Section, F.S & C.W. Department.

TABLE NO. 10.2 FAIR PRICE SHOPS AS ON MARCH 2011																			
Sl. No.	District	URBAN		RURAL		Total	Co-operative			Mun/NAC		G.P		Maitry		Total Urban	Total Rural	Total	
		Pvt.	SHG	Pvt.	SHG		Urban	Rural	Total	Urban	Urban	Rural	Urban	Rural	Urban				Rural
1	Angul	147	25	665	461	1298	6	13	19	3	209					181	1348	1529	
2	Balasore	98		1243	39	1380	6	50	56		14					105	1346	1451	
3	Bargarh	56	24	640	303	1023	3	10	13		196				0	83	1149	1232	
4	Bhadrak	102	2	608	18	730	2	1	3		60				0	106	687	793	
5	Bolangir	180	4	1078	149	1411	2	2	2		270				4	188	1499	1687	
6	Boudh	26		40	95	161	2	7	9		55					28	197	225	
7	Cuttack	534		1052	37	1623	7	23	30		56				4	541	1172	1713	
8	Deogarh	20		172	40	232		3	3		60					20	275	295	
9	Dhenkanal	7	107	38	797	949	2	8	10		21					116	864	980	
10	Galpati	43		259	172	474		7	7		61					43	499	542	
11	Ganjam	390		948	58	1396	5	61	66	1	475					396	1542	1938	
12	Jagatsinghpur	75		586	165	826	5	10	15	1	79					81	840	921	
13	Jajpur	90	13	866	132	1101		25	25		5					103	1028	1131	
14	Jharsuguda	94	19	76	43	232	4		4		78					117	197	314	
15	Kalahandi	43	9	60	638	750	3		3		271					55	969	1024	
16	Kandhamal	11	6	77	219	313	1	52	53		131				3	19	482	501	
17	Kendrapada	102	0	685	9	796	2	54	56		1					104	749	853	
18	Keonjhar	130	69	139	267	605	2	5	7		195				6	202	612	814	
19	Khurda	191	42	523	58	814	8	17	25		21				5	246	619	865	
20	Koraput	149	18	292	764	1223	15	5	20		206					182	1267	1449	
21	Malangiri	4	27	2	376	409			0	1	108					32	486	518	
22	Mayurbhanj	98	35	985	724	1842	7	144	151		137				21	161	1990	2151	
23	Nawarangpur	45	4	12	499	560	2	38	40		114					51	663	714	
24	Nayagarh		1		4	5	2	13	15		179				4	4	200	204	
25	Nuapada	13	71	63	171	318	1	4	5	1	85				1	87	323	410	
26	Puri	500	17	851	33	1401		21	21		31					517	936	1453	
27	Rayagada	22	2	16	171	211	20	3	23	4	168				2	50	358	408	
28	Sambalpur	244	10	264	361	879	10	1	11	1	65				2	267	691	958	
29	Sonepur	35	2	4	135	176	1	9	10		37					38	185	223	

TABLE NO.10.3						
DISTRICTWISE NO. OF RATION CARDS AS ON 31.03.2011						
Sl. No.	Name of the District	BPL Cards	AAY Cards	APL Cards	TOTAL	AY Card
1	Angul	96990	29750	96213	222953	1967
2	Balasore	180205	82742	136243	399190	3472
3	Bargarh	129786	48548	132175	310509	2471
4	Bhadrak	107483	46080	123748	277311	2263
5	Bolangir	164981	52896	149929	367806	2519
6	Boudh	57477	17112	24794	99383	650
7	Cuttack	170022	49099	313562	532683	4038
8	Deogarh	33817	12922	8773	55512	480
9	Dhenkanal	98070	35637	70082	203789	1940
10	Gajpati	57151	20216	47896	125263	932
11	Ganjam	266499	79314	289606	635419	5534
12	Jagatsinghpur	70533	24883	191490	286906	2076
13	Jajpur	150389	45217	128504	324110	2837
14	Jharsuguda	35046	8285	77695	121026	914
15	Kalahandi	146837	53676	103112	303625	2315
16	Kandhamal	90960	29273	29459	149692	1118
17	Kendrapada	107993	36053	195677	339723	2353
18	Keonjhar	185378	59723	112561	357662	2736
19	Khurda	122554	38958	246518	408030	3074
20	Koraput	185906	64260	77045	327211	2108
21	Malkangiri	75528	23851	35172	134551	864
22	Mayurbhanj	287643	98288	161137	547068	3857
23	Nawarangpur	110324	51539	41696	203559	1733
24	Nayagarh	107546	29916	94973	232435	1602
25	Nuapada	83792	26253	33792	143837	961
26	Puri	146755	41871	119323	307949	2672
27	Rayagada	103585	43172	53373	200130	1461
28	Sambalpur	93491	28190	123193	244874	1656
29	Sonepur	58811	25165	49615	133591	976
30	Sundargarh	165593	47772	212684	426049	3221
	Total	3691145	1250661	3480040	8421846	64800

Source: Food Security Section

TABLE NO. 11.1 MONTHWISE ALLOTMENT, LIFTING AND OFFTAKE OF ESSENTIAL COMMODITIES IN THE STATE DURING 2009-10													
Month	RICE (in M.T)			APL WHEAT(in MT)			LEVY SUGAR (in M.T)			KEROSENE (in KLs)			
	Allotment	Lifting	Offtake	Allotment	Lifting	Offtake	Allotment	Lifting	Offtake	Allotment	Lifting	Offtake	Lifting
APR	1,60,714.64	1,54,248.12	1,56,981.61	32,735.00	29,514.34	19,700.79	7,375.50	3,288.92	2,481.00	33,720.00	33,622.00		
MAY	1,60,714.64	1,53,916.09	1,56,236.87	32,735.00	30,282.39	29,982.95	8,733.30	3,203.48	3,761.22	33,720.00	33,481.00		
JUN	1,60,714.64	1,55,957.37	1,53,451.02	32,735.00	29,066.00	28,008.11	10,752.00	5,101.13	5,146.93	33,720.00	33,718.00		
JUL	1,60,714.64	1,61,241.12	1,60,174.67	32,735.00	29,448.28	32,334.11	9,265.50	5,591.45	4,654.20	33,588.00	33,458.00		
AUG	1,60,259.66	1,56,544.76	1,58,273.56	32,735.00	29,330.45	28,621.73	8,064.00	5,147.41	5,346.45	33,588.00	33,248.00		
SEP	1,60,259.66	1,57,673.79	1,57,104.35	32,735.00	31,497.51	35,087.10	10,752.00	7,834.80	8,056.10	33,588.00	33,648.00		
OCT	1,60,228.31	1,53,438.09	1,52,088.54	32,735.00	30,784.54	30,833.71	7,586.80	3,975.50	2,696.40	33,660.00	33,534.00		
NOV	1,60,228.31	1,58,326.67	1,58,780.15	32,735.00	31,280.39	30,521.41	8,741.10	4,954.75	3,796.79	33,660.00	33,316.00		
DEC	1,60,226.61	1,57,713.96	1,56,486.36	32,735.00	31,388.50	32,621.77	8,737.30	8,022.26	8,699.42	33,660.00	33,653.00		
JAN	1,60,226.61	1,55,401.92	1,56,237.09	32,735.00	31,388.50	32,621.77	8,737.30	2,686.50	4,436.71	33,660.00	33,060.00		
FEB	1,60,226.61	1,56,825.65	1,58,081.50	32,735.00	30,941.27	31,212.91	10,752.00	6,159.62	3,157.54	33,660.00	33,628.00		
MAR	1,60,226.61	1,56,825.68	1,58,081.50	32,735.00	31,144.69	30,874.74	8,064.00	10,404.45	3,157.54	33,660.00	33,568.00		
TOTAL	19,24,740.89	18,78,113.20	18,81,977.21	3,92,820.00	3,66,066.86	3,62,421.10	1,07,560.80	66,370.27	55,390.30	4,03,884.00	4,01,934.00		

Source : OSCSC Ltd., E.C. Section and F S Section

TABLE NO. 11.2 MONTHWISE ALLOTMENT, LIFTING AND OFFTAKE OF ESSENTIAL COMMODITIES IN THE STATE DURING 2010-11													
Month	RICE (in M.T)			APL WHEAT (in MT)			LEVY SUGAR (in M.T)			KEROSENE (in Kls)			
	Allotment	Lifting	Offtake	Allotment	Lifting	Offtake	Allotment	Lifting	Offtake	Allotment	Lifting	Offtake	Lifting
APR	1,58,670.53	1,49,942.06	1,48,996.92	32,735.00	28,840.32	24,738.14	8,999.70	10,799.79	8,640.17	33,588	33,504	33,588	33,588
MAY	1,59,547.43	1,52,730.40	1,52,486.51	32,735.00	30,289.33	30,040.55	8,737.30	14,073.95	11,556.94	33,588	33,487	33,588	33,487
JUN	1,58,670.53	1,55,435.06	1,53,801.54	32,735.00	28,316.86	28,993.72	8,738.60	9,869.27	10,634.65	33,576	33,353	33,576	33,353
JUL	1,58,116.99	1,53,936.10	1,53,975.39	32,735.00	31,135.22	31,036.91	11,215.00	9,063.16	10,889.69	33,588	33,517	33,588	33,517
AUG	1,68,310.99	1,55,340.07	1,56,429.16	39,407.00	28,539.80	30,345.44	8,064.00	9,503.73	10,196.17	33,588	33,514	33,588	33,514
SEP	1,68,310.99	1,62,994.49	1,61,869.71	39,407.00	36,835.40	34,854.87	10,820.60	8,597.26	2,988.14	33,588	33,466	33,588	33,466
OCT	1,67,991.93	1,60,951.96	1,60,110.31	39,407.00	34,302.21	36,418.98	8,064.00	9,322.68	10,565.01	33,588	33,020	33,588	33,020
NOV	1,93,412.44	1,90,287.69	1,76,675.24	39,407.00	33,802.91	32,119.11	8,543.80	7,267.69	6,936.37	33,588	32,872	33,588	32,872
DEC	1,67,184.98	1,86,342.33	1,96,841.05	39,407.00	33,625.22	34,384.71	8,449.80	4,784.91	5,886.63	33,588	32,727	33,588	32,727
JAN	1,87,376.67	1,78,381.70	1,78,957.97	39,407.00	33,886.73	34,057.80	8,739.40	10,161.69	8,990.93	33,588	33,547	33,588	33,547
FEB	1,77,126.67	1,78,740.09	1,81,535.29	39,407.00	28,900.85	29,213.00	10,752.00	10,063.90	9,787.09	33,588	33,432	33,588	33,432
MAR	1,77,126.67	1,71,234.78	1,76,755.99	32,574.00	29,055.90	30,685.08	8,064.00	3,548.15	6,328.09	33,588	33,289	33,588	33,289
TOTAL	15,64,958.30	15,38,209.23	15,42,150.11	3,41,158.00	3,77,510.76	3,76,888.31	1,08,588.20	1,07,056.18	1,03,399.88	4,03,044	3,99,728	4,03,044	3,99,728

Source : OSCS, Ltd. F. C. Section and F.S. Section

TABLE NO. 11.3
SCALE OF DISTRIBUTION OF PD ITEMS (Mar,11)

Target Groups :

Rice	<p>⇒ 12.645 lakhs Antyodaya Anna Yojana families supplied with rice at a specially subsidised price @ Rs. 2.00 a kg @ 35 kg. per month with effect from August 2008.</p> <p>⇒ 37.59 lakhs BPL families as per 1997 BPL survey and APL families of KBK Districts to receive:</p> <p>25 kg of rice at a specially subsidised price @ Rs.2.00 a kg.to riot affected APL families in Kandhamal district.</p> <p>5 kg. Special adhoc /additional rice per BPL families per card per month @ Rs.2/- per kg.</p> <p>⇒ 15 kg. of rice to each ST/SC student of hostels run by ST SC Dev. Deptt. per month for 10 months a year.</p> <p>⇒ 10 kg of rice free of cost to 64,800 number of Annapurna beneficiaries.</p>
Wheat	<p>⇒ Up to 10 kg per APL card per month @ Rs.7.00 per kg. subject to availability.</p>
Levy Sugar	<p>⇒ 2 kg per BPL/AAY card per month @ Rs.13.50 per kg.</p>
Kerosene	<p>⇒ 4 ltrs. per card per month irrespective of APL or BPL families.</p>

TABLE NO. 11.4				
District-wise P D S Outlets in the State				
Name of District	No. of Storage Agents	No. of PD Retail Outlets	No. of SKO Wholesaler	No. of SKO Sub-Wholesaler
Angul	8	1529	3	13
Balasore	29	1451	12	53
Bargarh	26	1232	7	19
Bhadrak	28	793	7	43
Bolangir	47	1687	6	53
Boudh	8	225	2	12
Cuttack	63	1713	16	70
Deogarh	8	295	1	9
Dhenkanal	22	980	4	22
Gajpati	9	542	5	18
Ganjam	61	1938	16	72
Jagatsinghpur	29	921	9	67
Jajpur	39	1131	7	35
Jharsuguda	18	314	4	11
Kalahandi	31	1024	3	37
Kandhamal	17	501	2	20
Kendrapada	46	853	7	53
Keonjhar	41	814	5	62
Khurda	31	865	11	46
Koraput	24	1449	5	37
Malkangiri	16	518	2	14
Mayurbhanj	56	2151	10	47
Nawarangpur	21	714	3	23
Nayagarh	8	204	5	49
Nuapada	8	410	2	16
Puri	36	1453	8	46
Rayagada	16	408	3	21
Sambalpur	20	958	10	22
Sonepur	16	223	3	12
Sundargarh	29	1657	11	37
TOTAL	811	28953	189	1039

TABLE NO. 12.1 MONTH WISE STATE AVERAGE WHOLESAL PRICES OF SOME ESSENTIAL COMMODITIES OF SELECTED MARKETS IN THE YEAR 2009-10 (Rs per Ont)															
Month	Rice(C)	Wheat	Atta	Maida	Sujji	M. Dal	A. Dal	M. Oil	Palmoline	Vanaspati	Sugar	Gur	Salt	Potato	Onion
April	1,328.89	1,208.67	1,387.78	1,510.00	1,621.33	4,753.33	5,117.11	6,399.67	4,957.33	4,288.44	2,526.67	2,509.25	309.50	987.89	852.44
May	1,315.56	1,208.67	1,345.78	1,418.56	1,559.11	4,808.89	5,256.89	6,351.11	5,031.78	4,507.22	2,440.56	2,922.75	294.50	1,028.89	828.33
June	1,315.56	1,206.87	1,353.11	1,396.33	1,577.56	4,975.56	5,619.22	6,027.22	4,808.11	4,462.67	2,508.89	3,064.63	294.50	1,251.11	991.67
July	1,337.78	1,206.67	1,324.22	1,455.44	1,617.22	5,836.67	7,194.44	6,105.11	4,539.22	4,193.41	2,573.33	3,101.88	297.00	1,312.22	1,013.33
August	1,346.67	1,232.33	1,413.33	1,539.89	1,694.11	5,927.78	7,142.44	6,129.89	4,820.11	4,302.89	3,040.00	3,153.88	304.50	1,355.00	916.67
September	1,348.89	1,234.67	1,391.56	1,597.00	1,705.22	5,985.56	6,986.00	6,025.89	4,622.11	4,153.44	3,038.89	3,245.10	304.50	1,683.33	1,108.89
October	1,357.78	1,333.67	1,414.89	1,606.78	1,729.22	7,613.33	7,536.22	6,120.56	4,480.33	4,172.89	3,191.11	3,252.38	304.50	1,850.44	1,835.56
November	1,387.78	1,322.00	1,532.00	1,724.00	1,855.22	7,968.89	7,834.22	6,312.44	4,559.89	4,230.00	3,430.00	3,175.75	304.50	1,464.44	2,261.11
December	1,383.78	1,382.00	1,580.89	1,811.89	1,918.89	8,036.00	7,485.33	6,549.67	4,998.11	4,328.67	3,427.78	3,208.25	304.50	1,277.78	1,874.44
January	1,388.89	1,392.00	1,583.11	1,811.00	1,902.11	8,046.67	7,030.22	6,505.00	4,687.11	4,306.78	3,977.78	3,265.75	304.50	548.89	1,716.67
February	1,366.57	1,375.33	1,607.56	1,763.00	1,843.56	7,433.33	5,935.56	6,144.44	4,703.78	4,265.78	3,651.11	3,208.00	304.50	384.44	1,222.22
March	1,402.22	1,352.00	1,588.78	1,719.11	1,810.78	7,538.89	5,803.56	6,218.33	4,801.56	4,395.00	3,281.11	3,048.50	304.50	353.33	877.78
Annual Avg.	1,356.70	1,287.91	1,460.25	1,612.75	1,736.19	6,576.58	6,578.43	6,240.78	4,725.79	4,300.60	3,090.60	3,096.34	302.63	1,124.81	1,291.59

TABLE NO. 12.2
MONTH WISE STATE AVERAGE WHOLESALE PRICES OF SOME ESSENTIAL COMMODITIES OF SELECTED MARKETS IN THE YEAR 2010-11

Month	MONTH WISE STATE AVERAGE WHOLESALE PRICES OF SOME ESSENTIAL COMMODITIES OF SELECTED MARKETS IN THE YEAR 2010-11														(Rs. per Quint.)		
	Rice(C)	Wheat	Atta	Maida	Suji	M.Dal	A.Dal	Bunt Dal	M.Oil	Palmoil	Vanaspati	Sugar	Gur	Salt	Potato	Onion	
April	1,405.56	1,121.67	1,426.33	1,525.44	1,620.33	7,872.22	6,209.11	2,968.00	6,107.22	4,793.00	4,426.33	3,097.78	2,922.00	304.50	596.67	790.00	
May	1,400.00	1,070.00	1,351.33	1,504.22	1,610.33	7,855.56	6,103.56	2,884.22	6,090.22	4,779.56	4,623.00	3,027.78	2,915.75	304.50	577.78	825.56	
June	1,421.11	1,078.33	1,394.22	1,579.89	1,694.89	7,893.33	6,030.89	2,892.00	5,994.11	4,842.44	4,910.67	2,853.89	3,065.75	307.00	542.22	880.00	
July	1,443.33	1,308.33	1,412.00	1,607.67	1,706.00	7,533.33	5,840.67	3,036.89	6,167.67	4,944.33	4,966.89	2,907.78	3,107.75	308.25	571.44	1,000.00	
August	1,491.11	1,280.00	1,400.44	1,598.33	1,698.67	6,466.67	5,391.56	3,065.56	6,357.33	5,365.11	5,261.22	2,767.11	3,003.50	297.00	550.11	1,168.11	
September	1,516.67	1,298.33	1,430.44	1,609.38	1,707.00	6,163.33	5,556.44	3,081.89	6,363.44	5,421.33	5,283.11	2,791.11	3,014.00	304.50	788.56	1,883.33	
October	1,522.22	1,311.67	1,446.33	1,611.00	1,705.63	5,538.89	5,242.67	3,191.56	6,317.00	5,591.44	5,391.78	2,875.56	2,996.50	304.50	802.56	1,922.22	
November	1,573.33	1,323.33	1,488.22	1,652.75	1,748.38	5,644.44	5,344.00	3,417.78	6,566.89	6,003.67	5,882.78	3,153.33	3,031.33	304.50	765.89	2,633.33	
December	1,595.56	1,361.67	1,523.11	1,685.50	1,787.25	5,655.56	5,126.00	3,315.11	6,838.33	6,332.44	6,223.44	3,175.00	2,946.26	304.50	733.89	3,755.56	
January	1,661.11	1,366.67	1,552.00	1,677.00	1,790.13	6,650.00	6,024.67	3,692.00	7,318.33	6,692.44	6,578.11	3,046.67	2,762.49	320.75	597.00	1,961.11	
February	1,672.22	1,366.67	1,533.11	1,673.25	1,788.75	6,366.67	5,841.56	3,508.67	7,277.67	6,783.89	6,693.56	2,954.44	2,673.75	335.75	490.00	1,422.22	
March	1,661.11	1,381.67	1,546.44	1,658.50	1,794.25	6,150.00	5,673.56	3,891.56	7,125.33	6,592.56	6,531.44	2,951.11	2,605.63	335.75	566.67	875.00	
Annual Avg.	1,550.28	1,272.36	1,459.50	1,615.24	1,720.97	6,648.33	5,698.72	3,195.44	6,545.30	5,677.68	5,564.36	2,866.80	2,920.39	310.96	631.90	1,595.04	

TABLE NO. 12.3 MONTH WISE STATE AVERAGE RETAIL PRICES OF SOME ESSENTIAL COMMODITIES OF SELECTED MARKETS IN THE YEAR 2009-10 (Rs. per kg.)															
Month	Rice(C)	Wheat	Atta	Maida	Suji	M.Dal	A.Dal	M.Oil	P.Oil	Vana.	Sugar	Gur	Salt	Potato	Onion
April	14.17	13.80	15.39	16.78	18.00	46.33	48.56	65.44	45.44	45.00	23.89	28.33	3.94	10.11	12.56
May	14.00	12.90	14.56	16.22	17.67	50.44	55.11	65.67	52.11	47.33	26.89	31.67	3.94	12.33	10.22
June	14.11	13.10	14.67	16.22	17.78	52.00	60.78	62.33	50.22	46.33	26.56	33.44	3.94	15.00	12.11
July	14.33	12.90	15.67	16.33	17.89	60.78	78.76	62.00	46.89	44.00	27.33	33.89	4.11	15.22	12.33
August	14.44	13.20	15.33	16.89	18.67	61.89	74.44	62.44	50.00	45.33	32.00	34.33	4.22	17.87	12.33
September	14.44	13.80	15.56	17.56	18.78	62.44	72.78	62.22	48.00	44.22	31.89	35.00	4.33	19.11	13.11
October	14.56	13.80	15.67	17.78	19.00	78.89	77.78	63.56	47.11	44.22	33.56	35.00	4.33	21.33	21.00
November	14.89	15.25	17.33	18.89	20.22	82.67	80.87	65.44	47.78	44.67	36.33	34.00	4.33	17.44	22.11
December	15.00	16.00	18.22	19.89	21.00	83.00	77.00	68.33	49.33	45.56	36.00	34.22	4.33	14.89	21.33
January	15.00	16.00	18.33	19.89	21.00	83.00	72.78	67.11	49.11	45.44	42.00	36.33	4.33	7.33	18.89
February	14.78	15.75	17.89	19.00	20.33	76.44	61.89	63.56	49.22	45.00	38.44	34.78	4.39	5.33	17.22
March	15.22	15.25	17.44	18.89	20.00	77.78	60.44	62.78	50.33	46.44	34.67	32.89	4.41	5.00	11.22

TABLE NO. 12.4																
MONTH WISE STATE AVERAGE RETAIL PRICES OF SOME ESSENTIAL COMMODITIES OF SELECTED MARKETS IN THE YEAR 2010-11																
Month	(Rs. per kg.)															
	Rice(C)	Wheat	Atta	Maida	Suji	M.Dal	A.Dal	B.Dal	M.Oil	P.Oil	Vana.	Sugar	Gur	Salt	Potato	Onion
April	15.22	15.50	16.00	17.67	18.56	81.22	65.11	32.00	61.78	50.22	46.67	31.67	31.89	4.33	7.78	10.11
May	15.11	14.25	15.22	17.11	18.33	80.78	63.89	30.89	61.78	50.44	48.67	32.00	32.22	4.33	7.44	10.56
June	15.44	14.38	15.89	18.00	19.22	81.33	63.00	31.33	62.44	51.00	51.44	30.44	33.89	4.33	7.67	11.00
July	15.78	15.00	16.00	18.22	19.44	77.78	61.11	32.89	64.11	52.33	52.22	30.78	33.78	4.39	7.89	12.56
August	16.44	14.50	15.56	18.00	19.56	67.11	56.78	33.33	65.78	56.33	54.89	29.56	33.11	4.39	7.67	14.33
September	16.67	14.75	16.00	18.00	19.54	64.78	58.33	33.44	65.89	56.67	55.22	29.89	32.67	4.39	10.33	21.78
October	16.78	14.75	16.22	18.25	19.63	58.67	55.44	34.56	65.44	58.11	56.33	30.56	32.67	4.39	10.44	22.00
November	17.22	14.75	16.67	18.50	20.13	58.78	55.89	36.33	68.33	62.33	61.00	33.22	31.11	4.39	9.89	29.56
December	17.44	15.25	16.89	19.13	20.63	58.89	53.78	35.33	70.67	65.78	64.44	33.56	32.33	4.39	9.56	40.44
January	18.00	15.25	17.33	19.00	20.63	69.11	64.22	38.67	74.78	69.56	68.22	32.56	31.33	4.56	8.44	23.00
February	18.00	15.25	17.11	19.00	20.75	66.11	61.44	37.33	75.22	70.11	69.00	31.67	29.78	4.56	6.56	16.44
March	17.89	15.25	17.22	18.75	20.83	64.33	59.78	36.44	73.56	68.22	68.00	31.44	29.22	4.56	7.44	11.44
Annual Avg.	16.67	14.91	16.34	18.30	19.77	69.07	59.90	34.38	67.48	59.26	58.01	31.45	32.00	4.42	8.43	18.60

TABLE NO. 12.5
Ministry of Consumer Affairs, Food and Public Distribution
Department of Consumer Affairs
Price Monitoring and Consumer Welfare Division
Daily Retail Prices of Essential Commodities

Date: 31/03/2011

Comd.	Rice	Wheat	Atta	Gram dal	Tur dal	Urad dal	Mung dal	Masoor dal	Sugar	Milk	Gr. Nal	Mustard oil	Soya	Sun Flower oil	Palm oil	Gar	Tea	Salt	Peas	Onion	Tomato	(Rs. per kg.)
NORTH ZONE																						
DELHI	25.00	15.50	17.00	39.00	71.00	73.00	72.00	54.00	32.00	25.00	128.00	78.00	77.00	79.00	95.00	30.00	150.00	14.00	9.00	11.00	18.00	18.00
HISAR	19.00	13.50	15.00	31.00	66.00	59.00	55.00	31.00	28.00	108.00	73.00	75.00	77.00	88.00	25.00	140.00	11.00	8.00	12.00	14.00	14.00	14.00
KARNAL	19.00	14.00	15.00	31.00	66.00	59.00	59.00	31.00	28.00	111.00	70.00	70.00	77.00	87.00	27.00	140.00	12.00	7.00	15.00	14.00	14.00	14.00
MANDI	22.00	16.00	18.00	36.00	63.00	60.00	68.00	46.00	32.00	16.00	85.00	85.00	85.00	87.00	27.00	120.00	12.00	5.00	12.00	18.00	18.00	18.00
SRINAGAR	22.00	20.00	19.00	62.00	59.00			33.00	24.00		86.00	82.00			290.00	13.00	12.00	15.00				18.00
JAMMU	25.00	14.00	15.00	33.50	65.00			48.00	32.00	24.00	102.00	97.00	72.00		294.00	14.00	10.00	12.00				12.00
LUCKNOW	16.00	13.00	16.00	36.00	65.00	55.00	62.00	48.00	32.00	32.00	98.00	73.00	72.00		240.00	12.00	7.00	12.00				12.00
KANPUR	14.00	15.00	16.00	36.00	69.00	55.00	60.00	45.00	32.00	32.00	118.00	70.00	69.00		140.00	14.00	6.00	10.00				10.00
VARANASI	15.00	15.00	15.50	33.00				33.00	28.00	95.00	78.00	65.00			180.00	12.00	7.00	15.00				10.00
AGRA	14.50	12.50	14.00	33.00	58.00	56.00	56.00	33.00	30.00	90.00	85.00	85.00			200.00	12.00	5.00	10.00				16.00
DEHRADUN	16.00	14.00	15.00	34.00	62.00	58.00	70.00	32.00	28.00	86.00	89.00	70.00	77.00		30.00	150.00	14.00	8.00	10.00			12.00
WEST ZONE																						
MUMBAI	20.00	21.00	24.00	39.00	66.00	77.00	78.00	57.00	32.00	29.00	85.00	83.00	75.00		198.00	14.00	14.00	14.00				14.00
AHMEDABAD	16.00	14.00	14.00	36.00	65.00	55.00	60.00	45.00	30.00	32.00	85.00	85.00	66.00	72.00	89.00	62.00	35.00	20.00	12.00	8.00	12.00	15.00
RAJKOT	17.00	13.00	16.00	32.00	60.00	58.00	65.00	45.00	30.00	24.00	87.00	89.00	64.00	69.00	72.00	61.00	30.00	16.00	12.00	10.00	12.00	20.00
BHOPAL	18.00	15.00	15.00	31.00	61.00	52.00	64.00	41.00	30.00	32.00	92.00	88.00	54.00	65.00	77.00	52.00	28.00	16.00	12.00	5.00	10.00	14.00
RAIPUR	19.00	17.00	20.00	36.00	65.00	55.00	60.00	45.00	30.00	24.00	95.00	80.00	72.00	74.00	86.00	160.00	8.00	10.00	10.00			8.00
INDORE	21.00	15.00	17.00	36.00	65.00	64.00	65.00	49.00	30.00	29.00	85.00	71.00	70.00	83.00	28.00	170.00	8.00	9.00	9.00			12.00
NAGPUR	19.00	16.00	17.00	32.00	59.00	56.00	61.00	41.00	31.00	24.00	81.00	86.00	64.00		26.00	130.00	12.00	9.00	9.00			8.00
MARHAUS	20.00	14.00	14.00	29.00	59.00	52.00	57.00	44.00	31.00	24.00	81.00	83.00	69.00	70.00	26.00	120.00	12.00	4.00	4.00			16.00
EAST ZONE																						
KOLKATA	21.50	15.50	15.50	35.50	65.50	75.50	75.50	55.50	35.50	27.50	85.50	85.50	65.50	75.50	155.50	65.50	15.50	15.50	15.50			15.50
CHENNAI	22.50	15.50	16.50	35.50	65.50	75.50	75.50	55.50	35.50	27.50	85.50	85.50	65.50	75.50	155.50	65.50	15.50	15.50	15.50			15.50
HYDRABAD	21.50	15.50	16.50	35.50	65.50	75.50	75.50	55.50	35.50	27.50	85.50	85.50	65.50	75.50	155.50	65.50	15.50	15.50	15.50			15.50
BANGALORE	21.50	15.50	16.50	35.50	65.50	75.50	75.50	55.50	35.50	27.50	85.50	85.50	65.50	75.50	155.50	65.50	15.50	15.50	15.50			15.50
CHITTOUR	21.50	15.50	16.50	35.50	65.50	75.50	75.50	55.50	35.50	27.50	85.50	85.50	65.50	75.50	155.50	65.50	15.50	15.50	15.50			15.50
MADRAS	21.50	15.50	16.50	35.50	65.50	75.50	75.50	55.50	35.50	27.50	85.50	85.50	65.50	75.50	155.50	65.50	15.50	15.50	15.50			15.50
HYDRABAD	21.50	15.50	16.50	35.50	65.50	75.50	75.50	55.50	35.50	27.50	85.50	85.50	65.50	75.50	155.50	65.50	15.50	15.50	15.50			15.50
HYDRABAD	21.50	15.50	16.50	35.50	65.50	75.50	75.50	55.50	35.50	27.50	85.50	85.50	65.50	75.50	155.50	65.50	15.50	15.50	15.50			15.50
HYDRABAD	21.50	15.50	16.50	35.50	65.50	75.50	75.50	55.50	35.50	27.50	85.50	85.50	65.50	75.50	155.50	65.50	15.50	15.50	15.50			15.50
HYDRABAD	21.50	15.50	16.50	35.50	65.50	75.50	75.50	55.50	35.50	27.50	85.50	85.50	65.50	75.50	155.50	65.50	15.50	15.50	15.50			15.50
HYDRABAD	21.50	15.50	16.50	35.50	65.50	75.50	75.50	55.50	35.50	27.50	85.50	85.50	65.50	75.50	155.50	65.50	15.50	15.50	15.50			15.50
HYDRABAD	21.50	15.50	16.50	35.50	65.50	75.50	75.50	55.50	35.50	27.50	85.50	85.50	65.50	75.50	155.50	65.50	15.50	15.50	15.50			15.50
HYDRABAD	21.50	15.50	16.50	35.50	65.50	75.50	75.50	55.50	35.50	27.50	85.50	85.50	65.50	75.50	155.50	65.50	15.50	15.50	15.50			15.50
HYDRABAD	21.50	15.50	16.50	35.50	65.50	75.50	75.50	55.50	35.50	27.50	85.50	85.50	65.50	75.50	155.50	65.50	15.50	15.50	15.50			15.50
HYDRABAD	21.50	15.50	16.50	35.50	65.50	75.50	75.50	55.50	35.50	27.50	85.50	85.50	65.50	75.50	155.50	65.50	15.50	15.50	15.50			15.50
HYDRABAD	21.50	15.50	16.50	35.50	65.50	75.50	75.50	55.50	35.50	27.50	85.50	85.50	65.50	75.50	155.50	65.50	15.50	15.50	15.50			15.50
HYDRABAD	21.50	15.50	16.50	35.50	65.50	75.50	75.50	55.50	35.50	27.50	85.50	85.50	65.50	75.50	155.50	65.50	15.50	15.50	15.50			15.50
HYDRABAD	21.50	15.50	16.50	35.50	65.50	75.50	75.50	55.50	35.50	27.50	85.50	85.50	65.50	75.50	155.50	65.50	15.50	15.50	15.50			15.50
HYDRABAD	21.50	15.50	16.50	35.50	65.50	75.50	75.50	55.50	35.50	27.50	85.50	85.50	65.50	75.50	155.50	65.50	15.50	15.50	15.50			15.50
HYDRABAD	21.50	15.50	16.50	35.50	65.50	75.50	75.50	55.50	35.50	27.50	85.50	85.50	65.50	75.50	155.50	65.50	15.50	15.50	15.50			15.50
HYDRABAD	21.50	15.50	16.50	35.50	65.50	75.50	75.50	55.50	35.50	27.50	85.50	85.50	65.50	75.50	155.50	65.50	15.50	15.50	15.50			15.50
HYDRABAD	21.50	15.50	16.50	35.50	65.50	75.50	75.50	55.50	35.50	27.50	85.50	85.50	65.50	75.50	155.50	65.50	15.50	15.50	15.50			15.50
HYDRABAD	21.50	15.50	16.50	35.50	65.50	75.50	75.50	55.50	35.50	27.50	85.50	85.50	65.50	75.50	155.50	65.50	15.50	15.50	15.50			15.50
HYDRABAD	21.50	15.50	16.50	35.50	65.50	75.50	75.50	55.50	35.50	27.50	85.50	85.50	65.50	75.50	155.50	65.50	15.50	15.50	15.50			15.50
HYDRABAD	21.50	15.50	16.50	35.50	65.50	75.50	75.50	55.50	35.50	27.50	85.50	85.50	65.50	75.50	155.50	65.50	15.50	15.50	15.50			15.50
HYDRABAD	21.50	15.50	16.50	35.50	65.50	75.50	75.50	55.50	35.50	27.50	85.50	85.50	65.50	75.50	155.50	65.50	15.50	15.50	15.50			15.50
HYDRABAD	21.50	15.50	16.50	35.50	65.50	75.50	75.50	55.50	35.50	27.50	85.50	85.50	65.50	75.50	155.50	65.50	15.50	15.50	15.50			15.50
HYDRABAD	21.50	15.50	16.50	35.50	65.50	75.50	75.50	55.50	35.50	27.50	85.50	85.50	65.50	75.50	155.50	65.50	15.50	15.50	15.50			15.50
HYDRABAD	21.50	15.50	16.50	35.50	65.50	75.50	75.50	55.50	35.50	27.50	85.50	85.50	65.50	75.50	155.50	65.50	15.50	15.50	15.50			15.50
HYDRABAD	21.50	15.50	16.50	35.50	65.50	75.50	75.50	55.50	35.50	27.50	85.50	85.50	65.50	75.50	155.50	65.50	15					

TABLE NO. 12.6
MONTHWISE SALE OF PETROL AND DIESEL IN ORISSA

(Fig. In MT)

Month	2008-09		2009-10		2010-11	
	Petrol	Diesel	Petrol	Diesel	Petrol	Diesel
April	19385	93016	22224	94088	25276	139890
May	22490	101587	23327	104623	26722	151656
June	14936	79863	23494	108705	28165	151989
July	18088	87080	20724	96618	25688	144749
August	16686	72010	21304	87211	24784	133100
September	17469	69965	22363	80545	24968	129032
October	19241	72480	23712	94286	26223	133792
November	18416	78709	21878	98136	25931	143463
December	18853	96348	23193	115553	25712	140805
January	20439	102540	23379	111973	25929	160762
February	21096	100783	24184	112567	25929	157039
March	24392	107828	26890	117203	30347	172077
TOTAL	231491	1062209	276672	1221508	315674	1758354

Source : SLC, IOC, Bhubaneswar

TABLE NO. 12.7
PRICE OF DIESEL, PETROL, L.P.G. & KEROSENE IN THE STATE

(Rs. Per litre)

	2008-09		2009-10		2010-11	
	Minimum	Maximum	Minimum	Maximum	Minimum	Maximum
Diesel	33.21	37.75	32.80	38.59	37.76	40.92
Petrol	41.09	51.16	40.75	48.33	47.53	56.61
L.P.G.(Cyl.)	307.60	362.17	326.50	343.00	330.80	381.10
Kerosene	9.37	9.47	9.17	9.98	9.55	13.15

TABLE NO.12.8
MONTHLY WHOLESALE PRICE INDEX OF SELECTED COMMODITIES
BASE YEAR 2004-05=100

RICE Weight = 1.79348												
Month/ Year	Jan	Feb	Mar	Apr	May	Jun	Jul	Aug	Sep	Oct	Nov	Dec
2011	170.6	170.4	167	167	167.7							
2010	164.7	164.1	163.3	163.5	163.5	164.3	165.9	164.4	166.6	168.7	170.3	171.1
2009	147	149.3	151.1	159.9	151	151.8	151.4	153.1	157.6	160.2	162.6	164.5
2008	127.3	128.8	130.9	132.6	132.7	132.6	133.9	134.9	135.7	145	146.3	146.3
WHEAT Weight=1.11595												
Month/ Year	Jan	Feb	Mar	Apr	May	Jun	Jul	Aug	Sep	Oct	Nov	Dec
2011	175.2	177.1	173.1	169.1	167.9							
2010	182.1	179.4	172.8	168.9	168.1	168.8	167.8	172.5	171.6	168.2	172.7	173.3
2009	150.7	152.3	150.7	155.7	158	158.4	157.5	156.5	159.1	163.3	174.0	180.8
2008	137.6	139	139.9	146.7	146.4	145.6	147.1	147	146.6	144.8	145.9	147
ARHAR Weight=0.1374												
Month/ Year	Jan	Feb	Mar	Apr	May	Jun	Jul	Aug	Sep	Oct	Nov	Dec
2011	190.4	202.8	199.4	198	192							
2010	262.7	231	220.1	224.3	228.6	225.6	222.8	199.4	203.2	196.9	185.6	181.7
2009	148.7	153.8	156.4	164.9	170.1	181.1	206.8	220.3	221.3	224.7	237.2	236.2
2008	130.2	128.6	136.2	133.5	129.7	131.8	138.3	146.3	147.1	148.9	148.4	148.4
MUNG Weight=0.08429												
Month/ Year	Jan	Feb	Mar	Apr	May	Jun	Jul	Aug	Sep	Oct	Nov	Dec
2011	258.6	255.4	250.4	253.8	251							
2010	301.9	290.6	299.5	316	322.9	327.2	309.5	305	270.7	257.4	243.5	248.7
2009	157.7	158.7	157.7	161.5	167.6	177.2	189.8	198.1	222.7	237.0	267.2	292.5
2008	125.4	129.6	132.1	132.4	130.7	133.4	141.4	154.9	159.3	160.5	161.1	157.2
GRAM Weight=0.3349												
Month/ Year	Jan	Feb	Mar	Apr	May	Jun	Jul	Aug	Sep	Oct	Nov	Dec
2011	155.4	159.2	156.6	152.7	151.7							
2010	155.1	146.4	144.3	143.9	144.1	143.2	145.2	149.2	146.6	149.5	151.8	154.9
2009	150.3	151.1	148.7	150.6	151	147.9	154.2	155.9	152.6	152.3	159.2	156.4
2008	142.3	146.7	155.4	153.3	150.1	152.5	154.6	159.6	155.2	157.4	157.3	155.4
SUGAR Weight=1.73731												
Month/ Year	Jan	Feb	Mar	Apr	May	Jun	Jul	Aug	Sep	Oct	Nov	Dec
2011	173	169.4	170.5	170.9	169.6							
2010	202.1	200.3	183.6	165.4	161	155.3	164.1	160.8	159.8	161.4	166.7	172.8
2009	120	127.4	127.2	132.8	136.4	140	142.8	157.5	167.4	168.8	184.1	185.7
2008	93.5	95	95.8	97	96.8	96.4	98.1	104.5	107.9	108.7	108.6	109.9
POTATO Weight=0.2015												
Month/ Year	Jan	Feb	Mar	Apr	May	Jun	Jul	Aug	Sep	Oct	Nov	Dec
2011	128.7	108.3	106.9	109.7	118.1							
2010	149.3	121.5	105.4	110.3	118.1	125.3	133.7	133.3	139.3	153.3	154.7	171.5
2009	92.7	88.5	103.2	143.5	172.2	199.8	232.7	244.5	268.7	303.6	293.6	240.1
2008	131.5	114.1	109.8	102.7	104	106.9	117.3	118.9	127.0	128.2	128.5	105.6
ONION Weight=0.17794												
Month/ Year	Jan	Feb	Mar	Apr	May	Jun	Jul	Aug	Sep	Oct	Nov	Dec
2011	619.4	260.6	179.1	163.4	153.3							
2010	270.4	247.8	171.3	148	139	150.2	158	164.7	204.8	278.4	343.7	169.3
2009	252.8	230.4	207.5	164.5	163.6	171	170.8	166.8	178.3	178.3	251.2	268.2
2008	120.5	114	114.4	113.3	107.8	126.5	144.1	170.3	169.1	169.1	211.9	227.9

Source: Ministry of Commerce and Industries, Govt. of India

**TABLE NO - 13.1
STATEMENT SHOWING ACTION TAKEN UNDER E.C. ACT DURING THE YEAR 2009-10**

MONTH	NO.OF CHECKS AND RADES MADE	NO.OF CASES DETECTED	NO.OF SHOW CAUSE ISSUED	NO.OF P.R. FILED	NO.OF PERSONS ARRESTED	NO.OF PERSONS CONVICTED	NO.OF LICENCE SUSPENDED	NO.OF LICENCE CANCELLED	AMOUNT OF SECURITY DEPOSIT FORFORITTED	AMOUNT OF ESSENTIAL COMMODITIES SEIZED	AMOUNT OF ESSENTIAL COMMODITIES CONFISCATED	AMOUNT FINE IMPOSED
1	2	3	4	5	6	7	8	9	10	11	12	13
APRIL	4884	10	5				3	2		1,86,791.00	17,181.00	1,000.00
MAY	5428	25	13	2			10	3		11,58,977.00	1,28,638.00	24,600.00
JUNE	5921	108	44				22	2	6,500.00	2,60,169.00	18,601.00	8,500.00
JULY	6475	145	68	8			64	4	7,500.00	8,09,806.00	28,535.00	1,02,800.00
AUGUST	5026	211	139	3	1		85	54	13,500.00	10,88,378.00	45,142.00	6,10,700.00
SEPTEMBER	6831	344	312	5	5		50	33	20,100.00	1,58,24,538.00	10,737.00	49,600.00
OCTOBER	6402	382	289	31			52	12	69,250.00	83,65,526.00	49,905.00	65,400.00
NOVEMBER	4911	180	147	17			28	1	24,500.00	2,45,654.00	16,656.00	19,500.00
DECEMBER	11604	293	182	98		9	70	11	7,543.00	1,15,21,392.00	10,84,045.00	1,19,300.00
JANUARY	4757	127	96	13			16	6	13,050.00	4,90,137.00		15,800.00
FEBRUARY	4011	85	63	11			12	12	12,250.00	94,065.00	1,400.00	23,500.00
MARCH	8909	213	174	32			27	30	40,800.00	4,46,152.00	300.00	6,300.00
TOTAL	75159	2123	1532	220	6	9	439	170	#####	4,04,91,585.00	14,01,140.00	10,47,000.00

**TABLE NO - 13.2
STATEMENT SHOWING ACTION TAKEN UNDER E.C. ACT DURING THE YEAR 2010-11**

MONTH	NO.OF CHECKS RADE	NO.OF SHOWCAUS E ISSUED	NO.OF CASES DETECTED	NO.OF P.R. FILED	NO.OF PERSONS ARRESTED	NO.OF PERSONS CONVICTED	NO.OF LICENCE SUSPENDED	NO.OF LICENCE CANCELLED	AMOUNT OF SECURITY DEPOSIT FORFITTED	AMOUNT OF ESSENTIAL COMMODITIES SEIZED	AMOUNT OF ESSENTIAL COMMODITIES CONFISCATED	AMOUNT FINE IMPOSED
1	2	3	4	5	6	7	8	9	10	11	12	13
APR	6662	92	139	10			35	7	11,200.00	1,98,528.00	43,581.00	11,000.00
MAY	5875	97	124	13			34	11	5,700.00	4,01,185.00	43,387.00	53,000.00
JUN	9229	154	435	13			44	34	45,900.00	3,28,230.00	17,100.00	19,800.00
JUL	5917	86	151	29			23	21	21,500.00	7,87,253.00	1,35,375.00	38,868.00
AUG	7001	284	312	77	3		35	16	34,700.00	15,11,993.00	1,65,576.00	16,500.00
SEP	3980	199	311	41	3		25	10	14,000.00	5,47,445.00	1,20,366.00	17,300.00
OCT	4594	301	273	37	1		29	13	17,500.00	60,09,893.00	2,66,319.00	19,800.00
NOV	3814	191	133	19			17	10	6,900.00	2,32,74,440.00	2,225.00	2,100.00
DEC	17938	231	660	213	3		85	54	17,500.00	3,10,42,074.00	5,89,645.00	1,00,350.00
JAN	5294	127	242	29			22	27	12,300.00	13,58,243.00	1,70,100.00	25,800.00
FEB	5359	258	253	24			31	8	19,500.00	69,522.00		13,578.00
MAR	7886	185	171	33	2		54	3	28,400.00	3,95,020.00	25,481.00	77,100.00
TOTAL	83549	2205	3204	538	12	0	434	214	2,35,100.00	6,59,23,826.00	15,79,155.00	3,95,196.00

TABLE – 14.1
CONSUMER WELFARE AND PROTECTION

A) CONSUMER WELFARE:

The scheme aims at awaring and educating consumers in various ways and means to protect them from harassment of unscrupulous traders, businessmen, manufacturers and service providers etc. as per the followings:

- (i) Awareness campaign and meeting are held by different field offices, voluntary consumer Organizations and NGOs with financial assistance.
- (ii) Workshops are conducted at State level and by Organizations on different topics like Electricity, Telephone, Petroleum and Petroleum Products, Banking, Insurance, Legal Metrology in presence of experts and public.
- (iii) Observance of National Consumers Day and World consumer Rights Day at State and Dist. Level by Government offices and Voluntary Organizations.
- (iv) Printing and distribution of posters and leaflets.
- (v) Advertisement in print and electronic media.
- (vi) Display of awareness messages through wall paintings and Hoardings.
- (vii) Awareness messages through performing art of folk dance and music like street play, Daskathia, Pala, Ghodanacha, Magic show etc.
- (viii) Awareness through setting up stalls in prominent melas, Mahoschavas, Ratha Yatra, Baliyatra, Adivasi Mela to disseminate information, literature, exhibition etc.
- (ix) Discussion and talk shows in local T.V. Channel, Radio and Gramsat Programmes.
- (x) Educating school children under Consumer Club scheme. 500 consumer clubs have been set up with financial assistance of Rs.50.00 lakh during 2006-07 in 500 schools covering 21 districts with assistance and guidance of 25 VCOs/NGOs acting as coordinating agency. They have been educated through teaching, meetings, literatures, booklets, drawing quiz essay and debate competitions, rally, slogan etc.

- (xi) Consumer Counseling Centres have been opened in office premises of the State Commission, District Forum. Local VCOs/NGOs have been selected to assist/guide the consumers before filing cases.
- (xii) State Institute of Consumer Awareness (SICA) has been set up in the premises of OSCSC Ltd. to work as a resource centre and to publish printing materials etc. A toll free Helpline No.1800-3456-760 has been set up in the office of SICA to keep note of grievances and to guide the people on PDS and Consumer related activities.
- (xiii) The Additional District Magistrate of the districts are declared as District Consumers Protection Officer for better co-ordination and supervision of work.
- (xiv) A corpus Fund called "Orissa Consumer Welfare Fund" has been created during the year 2004-2005 with Rs.97.00 lakh to provide financial assistance to different organizations to undertake Consumer welfare/awareness activities.
- (xv) Besides, another toll free helpline No.155335 has been set up to keep note of grievance and guide the people.
- (xvi) Consumer Advisory Centre at Berhampur and Bhubaneswar has been set up in the office premises of District Forum and Directorate of Legal Metrology respectively under GTZ scheme. Counselors have been selected for those centres.

B) CONSUMER PROTECTION :

The Consumer Protection Act, 1986 was enacted by the Govt. of India with the view to protect the interest of consumers from the unscrupulous traders, businessmen, manufacturers, service providers etc. and provide protective machinery for redressal of their grievances. Accordingly, the State Govt. enacted the rules called "The Orissa Consumer Protection Rules, 1988".

In the State One State Consumers Disputes Redressal Commission called as State Commission and 31 District Consumer Disputes Redressal Forums called District Forum are functioning. One District Forum in each District and additional one at Rourkela has been set up.

The State Commission and each District Forum consists of One President and Two Members, one of whom shall be woman.

Under Confonet Project Scheme the State Commission and all District Forums have been computerized.

The State Commission and District Forum having large number of Pending cases conducts Lok Adalat for speedy disposal of cases.

Details of cases filed, disposed in the State Commission and District Forum are given in a separate table.

DEPOSIT IN ORISSA CONSUMER WELFARE FUND

Year	Deposit in to Fund	Scheme	Budget provision	Sanction of Fund
2004-05	25,22,000 24,78,572	State Share by Commercial Tax	25,22,000	Nil
2005-6	47,00,000 1,14,000	By Govt. of India Transfer credit of Fees etc.	50,00,000	18,05,200
2006-07	7,24,000	-do-	35,00,000	17,18,200
2007-08	7,43,000	-do-	20,00,000	Nil
2008-09	-	-do-	20,00,000	19,87,410
2009-10	17,43,921	-do-	10,00,000	10,00,000

GRANTS RECEIVED FROM GOVERNMENT OF INDIA TOWARDS CONSUMER WELFARE AND PROTECTION

Year	Amount	Scheme	Purpose
2006-07	37,50,000	Creating Consumer Awareness in districts	-
	2,96,61,000	Integrated project scheme	Extension of existing building etc.
2007-08	27,25,,000	State Consumer Helpline	-
	10,00,000	Awareness amongs TPDS beneficiaries	-
	4,80,000	Creating Consumer Awareness	-

CONTD.....

CONTD.....

Year	Amount	Scheme	Purpose
2008-09	10,00,000	Awareness amongst TPDS beneficiaries	-
	30,00,000	Creating Consumer Awareness	-
	1,03,50,000	Integrated Projects Scheme	2nd installment for completion of building
2009-10	3,00,000	State Consumer Welfare Fund	Govt. of India balance share
	50,00,000	Consumer Club Scheme	2nd installment of 1st phase scheme
	60,00,000	Creating Consumer Awareness	-
2010-11	10,00,000	State Consumer Welfare Fund	
	50,00,000	Consumer Club Scheme	
	73,00,000.00	Creating Consumer Awareness	-
	3,00,000.00	Schedule Caste Component Plan	
	5,00,000.00	Tribal area Sub-plan	

TABLE NO. 14.2 DISTRICTWISE RELEASE OF FUNDS FOR CONSUMER AWARENESS PROGRAMMES DURING THE FINANCIAL YEAR 2010-11 (Rs. in TRS)															
Sl. No.	Name of the District	For NC Day	WCRD Day	Consumer Awareness 1st phase.	Consumer Awareness 2nd phase	Consumer Club	Counselling Center	TASP SCP	DCDRF	Local Festival	Legal Metrology (H.Q.)	Legal Metrology Field Offices	Work shop	Total	
1	2	3	4	5	6	7	8	9	10	11	12	13	14	15	16
1	Angul	5	5	16	50	200	42			2	20			30	370
2	Balasore	5	5	24	50	200	42	4.2	16.8	2	20		5	30	362
3	Bhadrak	5	5	14	50	200	42		25.2	2	20			30	393.2
4	Bolangir	5	5	28	50	200	42			2	20		5	30	387
5	Baragarh	5	5	24	50		42		21	2	20			30	199
6	Boudh	5	5	6	50		42		25.2	2	20			30	185.2
7	Cuttack	5	5	28	50	600	42		21	2	20		5	30	808
8	Deogarh	5	5	6	50					2	20			30	118
9	Dhenkanal	5	5	16	50	200	42		16.8	2	20		5	30	391.8
10	Gajapati	5	5	14	50	200	42	21		2	20			30	389
11	Ganjam	5	5	44	50	200	42		16.8	2	20		5	30	419.8
12	Jagatsinghpur	5	5	16	50	200	42		25.2	2	20			30	395.2
13	Jajpur	5	5	20	50	200	42		30.2	2	20			30	404.2
14	Jharsuguda	5	5	10	50	200	42			2	20			30	364
15	Kalahandi	5	5	26	50		42	8.4		2	20		5	30	193.4
16	Kandhamal	5	5	24	50			50.4		2	20		5	30	191.4
17	Kendrapara	5	5	18	50	200	42		25.2	2	20			30	397.2
18	Keonjhar	5	5	26	50	200	42	42		2	20		5	30	427
19	Khurda	5	5	20	50	400	42			2	20	35		30	609
20	Koraput	5	5	28	50	200	42	60.2		2	20		5	30	447.2
21	Malkangiri	5	5	14	50			29.4	25.2	2	20			30	180.6
22	Mayurbhanj	5	5	52	50	200	42	110.7		2	20		5	30	521.7
23	Nawarangpur	5	5	20	50		42	42		2	20			30	216
24	Nayagadh	5	5	16	50	200	42			2	20			30	370
25	Niupada	5	5	10	50		42			2	20			30	164
26	Puri	5	5	22	50	200	42		16.8	2	20		5	30	397.8
27	Rayagada	5	5	22	50	400	42	46.2		2	20			30	622.2
28	Sambalpur	5	5	18	50	200	42	12.6		2	20		5	30	389.6
29	Sonepur	5	5	12	50	200	42		34.6	2	20			30	400.6
30	Sundargarh (i)	5	5	34	50		42	72.9		2	20		5	30	265.9
31	Sundargarh (ii)						42			2					44
TOTAL		150	150	628	1500	5000	1134	500	300	62	600	35	65	900	11024

N C Day- national Consumers day, WCRD- world Consumers' Rights Day, SCP- Special Component Plan, TASP- Tribal Area Sub Plan

TABLE NO. 14.3					
ACTIVITIES OF CONSUMER REDRESSAL FORUMS IN THE STATE					
Sl.No.	Name of the district	2009-10		2010-11	
		No of cases filed	No of cases disposed	No of cases filed	No of cases disposed
1	Angul	187	178	154	111
2	Balasore	175	111	130	79
3	Baragarh	127	84	48	36
4	Bhadrak	66	83	111	29
5	Bolangir	123	153	94	24
6	Boudh	126	130	76	77
7	Cuttack	330	453	285	279
8	Deogarh	100	28	26	20
9	Dhenkanal	356	305	120	35
10	Gajapati	22	22	28	26
11	Ganjam	120	197	97	156
12	Jagatsinghpur	208	214	151	167
13	Jajpur	136	148	103	60
14	Jharsuguda	103	118	150	126
15	Kalahandi	37	121	41	64
16	Kandhamal	58	66	21	48
17	Kendrapada	137	157	77	51
18	Keonjhar	85	93	98	94
19	Khurda	679	387	521	205
20	Koraput	145	164	85	72
21	Malkangiri	104	62	74	24
22	Mayurbhanj	136	82	71	85
23	Nawarangpur	60	63	43	44
24	Nayagarh	59	63	58	37
25	Nuapada	32	42	52	47
26	Puri	255	177	247	89
27	Rayagada	222	208	296	278
28	Sambalpur	92	72	144	147
29	Sonepur	67	47	95	79
30	Sundargarh-1	157	170	164	142
31	Sundargarh-2 (RKL)	214	288	156	165
32	State Commission	156	138	108	260
33	Appeal Case	969	952	668	1563
TOTAL		5843	5576	4592	4719

Source : Consumer Court Section.

TABLE NO. 15
QUALITY CONTROL CELL

A) ORGANISATION

The Quality Control cell is an important technical wing of Food Supplies and Consumer Welfare Department functioning under the control of Commissioner-cum-Secretary to Govt. it was created by upgrading the erstwhile food grains analytical laboratory under central assistance. This wing ensures quality of food grain and other essential commodities for the benefit of the consumers.

B) QUALITY CONTROL OFFICERS

Nos.

1	Deputy Director, Quality Control	1
2	Assistant Director, Quality Control	1
3	Analyst, Quality Control Laboratory	3
4	Assistant Analyst, Quality Control Laboratory	4

C) MAIN OBJECTIVES

To ensure quality in food grains distributed under Public Distribution System

To ensure quality of Fair Average Quality paddy during procurement

To take different training programme in quality of foodgrains

To inspect storage points and to investigate public complaints relating to quality of food grains

TABLE NO. 16
DISTRICTWISE GODOWNS OWNED BY THE DEPTT. & OSCSC LTD., FCI,
MFPS & MOBILE VANS IN OPERATION

(Capacity in ' MT)

Sl. No.	Name of the districts	DEPTT. & OSCSC		F C I		No. of MFPS	No. of Mobile Vans
		No. of Godowns	Total Capacity	No. of Godowns	Total Capacity		
1	Angul	0	0	1	10000		
2	Balasore	8	5250	3	35000	2	3
3	Baragarh	6	3310	1	15000		5
4	Bhadrak	7	5000				
5	Bolangir	5	3668	1	15000	4	1
6	Boudh	2	434				2
7	Cuttack	17	10530			4	
8	Deogarh						
9	Dhenkanal	1	2000	1	12500		
10	Gajapati	1	250	1	10000		11
11	Ganjam	27	14492	1	14420		
12	Jagatsingpur	8	5207			1	
13	Jajpur	13	8187				
14	Jharsuguda	3	600	1	50000		
15	Kalahandi	9	3645	1	13340		1
16	Kendrapara	10	6050				
17	Keonjhar	10	5500	2	12500	1	3
18	Khurda	11	9200	2	24617	5	
19	Koraput	7	4243	1	17500	2	9
20	Malkangiri	3	750			2	5
21	Mayurbhanj	18	4750	1	10000		12
22	Nabarangpur	4	1000	1	10000		7
23	Nayagarh	1	367			6	
24	Nuapara	3	1535			1	4
25	Phulbani	4	1000	1	7500	2	3
26	Puri	12	6500				
27	Rayagada	6	3540	1	10000	2	13
28	Sambalpur	6	5070	2	28300	2	
29	Sonepur	1	500				
30	Sundargarh	8	4750	1	12500	1	9
	TOTAL	211	117328	23	308177	35	88

TABLE NO. 17.1					
MONTHWISE ACTIVITIES OF LEGAL METROLOGY, 2009-10					
Month	No of cases detected	No. of cases compounded	No. of prosecution made	Fines if any imposed (in Rs)	Revenue collected (in Rs)
APR	168	146		2,76,600.00	27,60,025.00
MAY	250	256	4	3,96,000.00	37,62,144.00
JUN	210	190		3,95,150.00	30,26,332.00
JUL	418	368	1	4,44,250.00	31,19,125.00
AUG	350	376		3,49,700.00	33,54,018.00
SEP	365	381		3,18,800.00	31,40,511.00
OCT	673	653	3	7,32,410.00	41,26,538.00
NOV	499	511	2	4,61,900.00	52,28,465.00
DEC	540	530	4	6,12,900.00	58,63,894.00
JAN	312	263	4	3,43,150.00	60,12,651.00
FEB	462	474	4	3,81,865.00	60,65,959.00
MAR	586	668	4	5,06,410.00	78,45,148.00
TOTAL	4833	4816	26	52,19,135.00	5,43,04,810.00

TABLE NO. 17.2
MONTHWISE ACTIVITIES OF LEGAL METROLOGY, 2010-11

Month	No of cases detected	No. of cases Compounded	No. of prosecution made	Fines if any imposed (in Rs)	Revenue collected (in Rs)
APR	171	149		1,49,900.00	32,69,869.00
MAY	215	230		1,18,375.00	40,09,160.00
JUN	197	172	1	1,67,850.00	26,81,096.00
JUL	224	125	1	1,80,170.00	31,38,054.00
AUG	648	570		4,30,380.00	36,72,383.00
SEP	741	710		5,64,550.00	37,46,940.00
OCT	675	655		6,82,650.00	44,52,707.00
NOV	731	779		7,02,600.00	60,36,107.00
DEC	721	740		7,77,250.00	68,58,084.00
JAN	721	724		7,94,800.00	77,34,644.00
FEB	725	746		11,61,140.00	74,97,908.00
MAR	833	868		12,75,005.00	90,36,328.00
TOTAL	6602	6468	2	70,04,670.00	6,21,33,280.00

TABLE NO. 18.1				
TELEPHONE NUMBERS OF MINISTERS & OFFICERS OF F.S & C.W. DEPARTMENT AT STATE HEADQUARTERS				
Sl.No.	Name	PABX	OFFICE	RES/MOBILE
1	Sri Niranjan Pujari, Minister, F.S. & C.W.	2181	2536972	9437150063
2	Sri Subhendu Kanoongo, PS to Minister, FS & CW	2181	2536972	9437291018
3	Sri Madhu Sudan Padhi, Comm.-cum- Secretary	2336	2536892	9437067762
4	Sri Lingaraj Sahoo, P S to Secretary	2336	2536892	9861167869
5	Sri Ananta Charan Nayak, Addl. Secretary	2343	2395238	9437860155
6	Sri Goutam Charan Nayak, DCA-cum-Joint Secy	2337	2394967	9438562005
7	Sri Amarnath Mahallik, FA-cum-Joint Secy	2339	2390307	9853270249
8	Sri Subha Kanta Mishra, Joint Secretary	2342	2390398	
9	Sri Bata Krushna Bhanj, Deputy Secretary	2347	2393644	9040756709
10	Mrs. Manjulata Swain, Dy Director-cum-Under Secy	2345	2393790	9437229178
11	Sri Pravakar Rout, Dyputy Director, M I	2341	2393644	9437740804
12	Smt. Preeti Manjari Jema, Under Secretary	2344		2396526
13	Sri Subrat Kumar Panda, Under Secretary	2361		9861007643
14	Smt. Puspalata samal, AFA-cum-Under Secretary	2346		9937703122
15	Sri Akhaya Kumar Das, Under Secretary			9861014075
16	Rama Narayan Misra, M I Officer, State Hqrs.	2349		9861471575
17	Sri Kina Charan Soren, DO, Control Room	2352		
18	Sri Sarat Ku. Sethi, DO, O E / Confidential Section	2350		9938199326
19	Ms. Kadambini Behera, SO, A/c. Section	2355		9776204206
20	Sri Raghunath Nayak, DO, Budget & Finance Section	2353		9437688853
21	Sri Pradip Mu. Behera, SO, FE-II Section	2356		
22	Sri Sarat Ch. Parida, SO, Gen. & Misc. Section	2358		
23	Sri Ratnakar Pradhan, SO, Special Estt. Section			9438301763
24	Sri Kasinath Sahoo, SO, Consumer Welfare Section	2360		9437129815
25	Sri Santosh Ku. Dalbehera, SO, Consumer Court Section	2360		9437627596
26	Sri Gangadhar Tripathy, SO, L & L Section	2352		9778165194
27	Sri Gayadhar Samal, SO, Pro. & Levy Section			
28	Market Intelligence Section	2349		
29	Ms. Sabita Mohanty, DO, E C Section	2357		9938512022
30	Sri Sessa Mohan Nanda, SO, RTI Cell	2357		9437356238
31	Sri Laxman Jena, SO, Pension & Arear Section	2351		9437562743
32	Sri B B Raymahapatra, SO, Enforcement Section			9853624883
33	Sri Sukadeb Sahoo, SO, Food Security II & Cor. Estt. Section	2340		8895724751
34	Sri Rabindra Ku. Mishra, DO, Food Security I Section			9439081745
35	Sri Sylvanus Kindo, SO, Dak Distribution Section			9937960520
36	Sri Khudiram Kala, DO, IMU Section			9778697518
37	Sri Babaji Samal, Supdt. Issue Section			9178797987

TABLE NO. 18.2				
TELEPHONE NUMBERS OF CIVIL SUPPLIES OFFICERS				
DISTRICT	NAME	STD-CODE	OFFICE	Mobile
Angul	Dibakar Barik	06764	230282	9438200031
Balasore	Narayan Ch. Pati	06782	262007	9438200032
Baragarh	Ramanath Sahoo, I/c	06646	235042	9438200033
Bhadrak	S N Panigrahi	06784	240424	9438200034
Bolangir	Abhiram Pradhan	06652	232672	9438200035
Boudh	Bhaktanath Nayak	06841	222251	9438200036
Cuttack	Ajit Kumar Patra	0671	2507744, 2507626	9438200037
Deogarh	Bidyadhar Nayak	06641	226458	9438200038
Dhenkanal	R K Dehuri	06762	224530, 224625	9438200039
Gajapati	Bikram Majhi	06815	222523	9438200040
Ganjam	P D M Khosla	06811	263931	9438200041
Jagatsinghpur	Laxmikant Behera	06724	220303, 220403	9438200042
Jajpur	Artatran Barik	06728	222055	9438200043
Jharsuguda	Balamukanda Majhi	06645	273144	9438200044
Kalahandi		06670	230392	9438200045
Kandhamal	Benedict Kerketa	06842	253670	9438200046
Kendrapada	Satrugna Nath Dalai	06727	220544	9438200047
Keonjhar	Subash Ch. Dora	06766	255405	9438200048
Khurda	Amar Mahapatra	06755	220607	9438200049
Koraput(Jeypore)	Dhirendra Ku. Sahoo	06854	251649	9438200050
Malkangiri	R M Bepari	06861	230358	9438200051
Mayurbhanj	S P Dora	06792	252648	9438200052
Nawarangpur	Dubaraj Majhi	06858	234199	9438200053
Nayagarh	Narendra Kumar Rout	06753	252439	9438200054
Nuapada	R N Gamango	06678	223430	9438200055
Puri	Bhagyadhar Das	06752	222228	9438200056
Rayagada	Santosh kumar Mohanty	06856	222425	9438200057
Sambalpur	Bijay Kumar Rath	06663	2410845	9438200058
Sonepur	Srikar Majhi	06654	220290	9438200059
Sundargarh	Sarat Chandra Das	06622	2172248	9438200060
State Hqrs.	Rabindra Nath naik	0674	2396227	
ACSO, Rourkela	M R Alli	0661	2505155	
ADM, Rourkela	Purna Chandra Pathi	0661	2500239	
ADM, Paradeep	Saroj Kanta Choudhury	06722	222237	
ADM, BBSR	Hari Ballav Mishra	0674	2393440	

TABLE NO. 18.3
Telephone Nos. of Market Intelligence Officers

<i>Name of the sector</i>	<i>Name</i>	<i>Office</i>	<i>Mobile</i>
Balasore	Kushal Ch. Majhi, MIO I/c	06782-265741	
Cuttack	Gyan Ranjan Jena, MIO I/c	0671-2507904	
Berhampur	M S Dalsingray, MIO I/c	0680-2207427	
Bhubaneswar	Deepak Ku. Satpathy	0674-2391859	9861007572
Sambalpur	Bisnu Mohan Das Samant MIO I/c	0663-2410216	
Rourkela	M R Ali	0661-2504463	
Keonjhar		06766-255405	9437224079
Bhawanipatna	K P C Patro	06770-230392	9437736536
Jeyore	Manmath Kumar Dey MIO I/c	06854-230649	9437736537

Telephone Number of Orissa State Civil Supplies Corporation Limited

<i>Name of the Officer</i>	<i>Designation</i>	<i>Office</i>	<i>Mobile</i>
Sri Madhu Sudan Padhi	Chairman	2394265	9437067782
Sri S K Vashisth	Managing Director	2391963	9437222222
Ms. Swati Mishra	O S D		
Sri Pramod Kumar Das	Gen. Manager, PDS	2391276	9438200030
Ms. Diptimayee Sahoo	Manager, PDS		
Indramani Acharya	Gen. Manager, Admin.		9438000944
Kishore Ch. Sahoo	Manager, Procurement		9437238915
Dr Pratap Indra Dash	Admin. Officer	2393036	9437312381
Sri Sudhansu Sekhar Nayak	Manager, (Dev.)	9438200029	9437214609
Sri M Muniyya	Gen. Manager(Accts.)	2536810	9337746524
OSCSL Ltd. PABX	2394956 / 2395391	Toll Free-18005556760	Fax-2390199

Telephone Number of Assistant Controller, Legal Metrology.

<i>Name of the Asst. Controller</i>	<i>Designation</i>	<i>Office</i>	<i>Mobile</i>
R Swain	ACLM, Balasore	06782-262465	9737283813
S Jani	ACLM, Bolangir	06652-232044	9437001324
S K Kandulana	ACLM, Cuttack	0671-2441095	9437242177
S Bari	ACLM, Dhenkanal	06762-223467	9437291004
M Majhi	ACLM, Ganjam	0680-2204678	9437242431
P G Panigrahi	ACLM, Kathahandi	06670-230536	9437206778
S K Tripathy	ACLM, Keonjhar	06766-255361	9437258438
Mayadhar Behera	ACLM, Koraput	06854-250443	9438065614
S Patra	ACLM, Mayurbhanj	06792-256413	9437656414
V T Rao	ACLM, Phulbani	-	9937375969
G Bag	ACLM, Puri	0671-2351930	9438265658
B K Pradhan	ACLM, Sambalpur	0663-2140996	9438309384
B K Pani	ACLM, Sundargarh	0661-2507760	9437224168

TABLE NO. 18.4				
TELEPHONE NOS. OF DISTRICT CONSUMER REDRESSAL FORUMS				
Name of District	Name of the President	Mobile No	STD Code	Office
ANGUL	Sudha Nidhi Dash	986131917	06764	231454
BALASORE	Ajay Kumar Samal	9437379825	06782	263910
BARGARH	Pramath Nath Dash	9938208385	06646	231532
BHADRAK	Md. Jobber Ahamed	9861004021	06784	241942
BOLANGIR	Vacant		06652	233388
BOUDH	Padmanav Mahakul	9937065327	06841	222419
CUTTACK	Krushna Chandra Swain	9438534451	0671	2366339
DEOGARH	Prabhat Kanta Dash	9437126349	06641	226879
DHENKANAL	Prabhat Kumar Sahoo	9437305664	06762	224279
GAJPATI	Bhubaneswar Pattanaik	9437825560	06815	223127
GANJAM	Harish Chandra Nayak	9437887121	06811	2200860
JAGATSINGHPUR	Sabyasachi Das	9437969047	06724	220107
JAJPUR	Biraja Prasad Kar		06728	223498
JHARSUGUDA	Sundarlal Behera	9937269244	06645	270699
KALAHANDI	Miss. Rajalaxmi Pattnaik	9437984077	06670	231008
KANDHAMAL	Ashok Kumar Behera	9437223155	06842	254363
KENDRAPADA	Chandrakant Kar	9437418461	06727	232030
KEONJHAR	Gyanendra Nath Jena	9437752575	06766	253390
KHURDA	Sk. Jan Hossain		0674	2350122
KORAPUT	Laxmi Narayan Panigrahi	9439825066	06852	230792
MALKANGIRI	Ashok Kumar Pattnaik	9437435399	06861	230337
MAYURBHANJ	Himansu Kumar Panigrahi	9437237982	06792	257574
NAWARANGPUR	Seshadeb Bisoi		06858	232780
NAYAGARH	Pradip Kumar Patnaik	9237014844	06753	252913
NUAPADA	Bhupatilal Sao	943861158	06678	223624
PURI	Naba Kishore Pattnaik	9861017109	06752	224781
RAYAGADA	K A Ramachandran		06856	223025
SAMBALPUR	Dilip Kumar Tripathy	9427228166	0663	2410037
SONEPUR	Subash Chandra Nayak	9439276802	06654	220401
SUNDARGARH(I)	Md. Inclab Umar	9437153227	06622	2173234
SUNDARGARH(II), RKL	Bijay Kumar Behera	9861311478	0661	2642989
STATE C D R COMM, CTC	Hon'ble Justice A K Samantray (President)	9437001941	0671	2365398
STATE C D R COMM, CTC	D K Patnaik (Secretary)	9437315468	0671	2363604

BY FAX/POST

GOVERNMENT OF ORISSA
FOOD SUPPLIES & CONSUMER WELFARE DEPARTMENT

No. 18407 /Dated, Bhubaneswar the 16.10.2010
PL IP 25/2010

From

Shri Ashok K.K. Meena, I.A.S
Commissioner-cum-Secretary to Govt.

To

All Collectors.

Sub: Food and Procurement Policy for the Kharif Marketing Season (KMS) 2010-11.

Sir/Madam,

This is to say that the Government have been pleased to approve the "Food and Procurement Policy" for the Kharif Marketing Season 2010-11. I am directed to communicate below the guidelines on the Food and Procurement Policy for the Kharif Marketing Season (KMS) 2010-11.

1. **Target:-**

Having regard to overall production, total availability of foodstuff in the State, requirement of food-grains and the trend of procurement in the past, the informal procurement target has been fixed at 32 Lakh MTs in terms of rice for the Kharif Marketing Season 2010-11. Out of this, paddy for at least 29 (twenty-nine) Lakh MT of rice will be procured by Government agencies, including the Food Corporation of India, and the balance quantity shall be procured through levy procurement. The Food Corporation of India is being requested to procure paddy equivalent to at least 4 Lakh MT of rice.

2. **Agencies:**

(i) Four State Government agencies namely, Orissa State Civil Supplies Corporation Limited (OSCSC), National Agricultural Co-operative Marketing Federation (NAFED),

Orissa State Co-operative Marketing Federation (MARKFED) and Tribal Development Co-operative Corporation of Orissa Ltd (TDCC) will procure paddy in the State, either directly from the farmers or with the help of PACS, WSHGs and Pani Panchayats as State Government agencies. Besides the Government may allow other State Government organizations to participate in paddy procurement.

- (ii) The Food Corporation of India (FCI) will also procure paddy directly from the farmers in the surplus districts assigned to it. The FCI is allowed to engage agencies to procure paddy from the farmers, directly in the districts assigned to the agency by the State Government during the KMS 2010-11, subject to conditions that the FCI shall be responsible for making payment of cost of paddy to the farmers, in the event of failure of its agencies to do so. The agencies will procure paddy under the overall supervision and control of the Collectors as per the district-wise procurement target assigned by the State Government and the FCI and its agencies will abide by all the directions issued by the State Government from time to time regarding paddy procurement. The paddy procured by FCI will not be stored under covered storage meant for rice.
- (iii) Food Supplies and Consumer Welfare (FS and CW) Department shall allocate district-wise target among Government agencies and the levy target among districts in such a manner so as to achieve the overall procurement target. The initial tentative district wise procurement target will be as at Annexure- 'A'.
- (iv) The Food, Supplies & Consumer welfare department shall fix the target for raw rice and parboiled rice as per the respective milling capacities and availability of suitable paddy in the concerned districts. The excess production of raw rice, if any, will be handed over to FCI for movement outside the State.

3. **Procurement under the Decentralized Procurement Scheme:**

- (i) The State Government Agencies namely Orissa State Civil Supplies Corporation Ltd, NAFED, MARKFED and TDCC will procure paddy directly from farmers in accordance with the Decentralized Procurement Scheme. The purchase centres of Government agencies shall be opened evenly through out the State in consultation with FS&CW Department and Collectors concerned. Paddy will be purchased by the procuring agencies directly from the farmers, or with the help of PACS, WSHGs and Pani Panchayats, as per quality specifications laid down by the Government of India and in accordance with the guidelines issued by the FS&CW Department from time to time. Prior to procurement of paddy, the State agencies including FCI will make agreement with rice millers for custom milling of paddy.
- (ii) The OSCSC will utilize the custom milled rice obtained from the paddy procured by it for distribution through the Public Distribution System in accordance with the Decentralized Procurement Scheme of Government of India.
- (iii) The OSCSC is also allowed to enter into agreements with the State government agencies like TDCC, MARKFED, and NAFED to obtain paddy and/or custom-milled rice (CMR) from these agencies and to distribute the CMR through the Public Distribution System in accordance with the Decentralized Procurement Scheme of Government of India. The OSCSC may provide working capital support to these agencies for the purpose from its own funds.
- (iv) The requirement of foodgrains for State Pool to meet the shortfall in GOI allocation will be procured by the OSCSC Ltd maintaining separate accounts and the balance quantity shall be delivered to Central Pool.

4. **Levy Procurement:**

- (i) The Food Corporation of India (FCI) will continue to procure levy rice from the millers as per Levy Control Order.
- (ii) The Orissa Rice and Paddy Procurement (Levy) and Restriction on Sale and Movement Order, 1982 as amended from time to time is in force in the State during the Kharif Marketing Season 2010-11. Collectors will ensure that the levy due as per law is collected from the millers including the CMR against the paddy delivered by the State agencies before they dispose any stock in open market.

5. **Minimum Support Price of Paddy and Procurement Price of Rice:**

- (i) The Government of India has announced the following Minimum Support Prices for different varieties of paddy conforming to Fair Average Quality (FAQ) norms for KMS 2010-11.
 - (i) Common : Rs.1000/- per quintal
 - (ii) Grade "A" : Rs. 1030/- per quintal

Payment of MSP is applicable only for FAQ standard paddy and sale of non-FAQ paddy below MSP will not amount to distress sale.

The Minimum Support Price announced by the Government of India for the FAQ paddy and paddy under relaxed specifications (as and when received from Government of India) may be accepted by the State Government and notified under Clause 4 of the Orissa Rice and Paddy Procurement (Levy) and restriction of Sale and Movement Order, 1982.

- (ii) The quality specifications of paddy and rice as decided by Government of India shall be applicable in the State. A copy of the FAQ norm is enclosed at Annexure-'B'
- (iii) The Government of India is yet to announce the economic cost of the custom milled rice and the procurement price for levy rice. The State Government may accept the prices as may be decided by the Government of India.

6. **Publicity Campaign:**

All State agencies, FCI and Collectors of the district will be responsible for giving due publicity regarding MSP, Location of purchase centre, Quality Specifications and mode of Payment through print, Electronic and Local media. Such lists should also be put up on the District and Department Websites. Extensive training programmes for the farmers through the Agriculture Extension Staff/Co-operations Department/Quality Control Officials may also be organized out of the funds earmarked in this regard by RMCs.

7. **Payment of Cost of Paddy**

- (i) Nobody, including the Miller Agents, State Government agencies and Food Corporation of India and its agencies will be allowed to purchase FAQ paddy at prices below the Minimum Support Price fixed by the Government for the Kharif Marketing Season 2010-11. Purchase of FAQ paddy at prices below the Minimum Support Price would amount to violation of the Orissa Rice and Paddy Procurement (Levy) and Restriction on Sale and Movement Order, 1982 and will be punishable under the Essential Commodities Act, 1955.
- (ii) Payment of total cost of paddy sold should be made on the spot by account payee cheque or through online bank transfer within three days, but not later than seven days in any case by the State Agencies. Action may be taken by the Collectors against procuring agencies who do not make payment of the cost of paddy within the prescribed period.
- (iii) Private Rice Millers should also make payment of cost by account payee cheques and through online electronic transfer immediately but not exceeding 3 (three) working days.
- (iv) Collectors will ensure that the cheques issued by millers are honored expeditiously through the Bank and farmers are benefited due to the system of payment by cheques.
- (v) Where paddy will be purchased through PACS, it shall be the duty of the Collector of the district to appoint an

authorised officer other than the Civil Supplies staff to ensure payment of MSP to farmers as per prescribed purchase procedures.

- (vi) The Collector shall appoint Senior Officers as Nodal Officer for Blocks / Sub-Divisions / big Market Yards to ensure that farmers do not face any difficulty in selling their paddy and getting the MSP. The Collectors shall also ensure that during the procurement operations all District/Sub-divisional/ Block and Tahasil level officers on tour to villages shall ascertain from farmers regarding payment of MSP. Any case of non-payment of MSP shall be brought to the notice of the Collector for taking action as per law.
- (vii) (The Collectors, after assessing the requirement, may also form suitable number of Procurement Monitoring Committees at appropriate levels involving Government Officers, public representatives and farmers.

8. **Purchase of Paddy:**

- (i) The Government have decided to allow OSCSC to procure paddy with the help of PACS/ WSHGs/ PPs in the decentralized procurement centers to help small & marginal farmers. To streamline the paddy procurement through PACS, Govt. have allowed OSCSC to make an agreement with DCCBs to engage PACS as the Commission Agent of OSCSC. PACS/ WSHG/PPs will be selected on the basis of availability of manpower, infrastructure, testing equipments, storage capacity and past track records of previous KMSs.
- (ii) Government agencies are allowed to procure paddy from market yards/temporary yards/Krushak Bazars of RMCs as well as through Paddy Purchase Centre (PPCs) operated by these agencies through their own officials.. These PPCs will be deemed to be temporary yards of the RMCs and the Government agency concerned shall be responsible for payment of the market fees for the transactions made at the PPCs and for maintenance of all records thereof. They will also be allowed to procure

through PACS, Women Self Help Groups, LAMPS and Pani Panchayats

- (iii) This procedure is expected to benefit the small and marginal farmers to sell their produce at village level and to save the expenditure and problems in transportation of paddy to Regulated Market Yards and consequent handling at the Market Yard besides reducing the congestion at Market Yards. OSCSC will provide the working capital requirement while PACS/WSHG/Pani Panchayats will ensure that FAQ paddy is procured from farmers at MSP.
- (iv) The procedure for the operations, transportation, storage, milling, delivery etc., will be worked out mutually between Managing Director, OSCSC and Registrar of Co-operative Societies in case of PACS and between MD, OSCSC Ltd and Director, Mission Shakti in case of WSHGs.
- (v) Private rice millers are allowed to procure paddy from the market yards, Krushak Bazars and temporary yards etc of the Regulated Market Committees (RMC's) only. However, where such yards do not exist within a distance of ten Km from a mill, the Collectors may allow procurement of paddy at the temporary yards set up at the mill-gate equipped with all the facilities on designated days under the supervision of Government officials to ensure proper weighment and payment of MSP.
- (vi) RMCs will make additional arrangements for conducting auction of superior quality of paddy in RMC yards so that the farmers, who wish to get their paddy auctioned over and above the MSP provided by Government, could take it for auction in which authorized millers, traders and other agencies will participate to take such quality of paddy after auction in the RMC yards.
- (vii) The District Collector with the help of CSO cum DM OSCSC, DRCS, Secretary DCCB, DSWO, Deputy Director, Agriculture/DAO, Executive Engineer, Irrigation and any other officer considered suitable by the Collector shall prepare a list of capable PACS/WSHG/ Pani

Panchayats who will participate in the paddy procurement operations as agents of OSCSC.

- (viii) Thereafter area of procurement operations of the PACS/WSHG/ Pani Panchayats will be delineated. On an average it is expected that each PACS shall cater to the requirement of 3-4 GP's, whereas the WSHG/ Pani Panchayats may cater to a smaller area after due verification of farmers. The PACS/WSHG/ Pani Panchayats shall procure paddy from all the small and marginal farmers in the tagged area. Depending upon their capacity, they can also procure from middle and large farmers. In no case they should be allowed to procure from RMC yard/ Krushak Bazar/ PPC of other agencies.
- (ix) The area not covered by PACS/WSHG/ Pani Panchayats will then be allocated to different state agencies and FCI so that the entire district is covered uniformly by PPC's.
- (x) PACS/WSHG/PPs will cater primarily to the needs of small and marginal farmers due to their limited capacity for weighing and quality testing. Farmers with larger quantities of paddy will go to the nearest RMC Yard or if no such yard is available within a distance of 10 KMs, a temporary purchase yards set up at a nearby mill gate equipped with all the facilities.
- (xi) Collectors can decide the days of the week for paddy procurement operations at different PPC's for procurement of paddy. This will streamline procurement operations given limitation of staff etc.
- (xii) In consultation with the District Millers Association, Collectors will assign Millers to each PPC. Every Miller will be required to do online registration before he is allowed to participate in procurement operation. Software provided by NIC has already been made available online through website of F.S. & C.W. Deptt. The tagging of Millers to PPC's after decision by concerned Collector will be entered in online software for regular monitoring of PPC operation. The Rice Millers shall undertake

simultaneously the custom milling of paddy procured by state agencies or FCI, as per the agreed terms and conditions and at the rates and norms framed by the Govt. of India. The miller or his representative will remain present on the procurement days. To avoid storage of stocks at the PPCs, the assigned millers shall ensure lifting of the paddy on regular basis.

- (xiii) In case of districts where adequate numbers of millers are not available, the Collector may assign millers from other nearby districts in consultation with the concerned Collectors and MD, OSCSC. This process will also be entered into the software provided by NIC.
- (xiv) The Collectors shall review the progress of custom milling and lifting of paddy from decentralized PPCs run by PACS/WSHGs / Pani Panchayats on a regular basis, and take necessary action for ensuring paddy is regularly lifted by millers.
- (xv) Farmers will bring FAQ paddy to the PPC's alongwith proof of identity and Bank Passbook of any Bank/Co-operative Bank/Post Office. Software provided by NIC will be used to enter the farmer details including such account numbers.
- (xvi) Collectors should encourage WSHG's and private persons to provide paddy cleaning services at each PPC. Private entrepreneurs with power cleaners should also be actively encouraged. Collector can invite & finalize tenders for private entrepreneurs to provide cleaning services at PPCs / Mandis in the district. Farmers should have this facility available on payment basis.
- (xvii) The Collectors will select WSHGs to procure paddy on behalf of OSCSC Ltd. and other State agencies including FCI. The WSHG's are authorized to purchase upto 15 quintal paddy from a farmer during the entire KMS in cash. Quantities of more than 15 quintal may be purchased only against account payee cheque to be issued by the WSHG or by the State Government agencies. The Government agency concerned shall lift the paddy from the WSHG concerned at least once every

fortnight or more frequently, if required, so that WSHG's/farmers do not face any inconvenience. Equipment for weighing of paddy, gunny bags and moisture meters will be provided by the RMCs or State agencies concerned.

- (xviii) All payments by the State Government agencies to the WSHG's shall be made only by account payee cheques.
- (xix) All the State Government agencies shall submit a computerised list of farmers from whom paddy has been purchased, along with details including Bank Account Numbers of farmers, on a daily basis to the concerned Collectors. This will act as a check to ensure only genuine farmers sell paddy. For this purpose, PPC wise software will be provided by NIC to each State agency and the same must be used by them.

9. **Equipment**

Collectors will assess the requirement of equipment at market yards / PPC's for carrying out procurement operations. The orders for these shall be placed at the District level and funds provided by the concerned RMC's. It shall be ensured that all PPCs have the necessary infrastructure in place before the starting of procurement operations.

10. **Identification of Farmers:**

- (i) The OSCB through PACS has made a list of nearly 52 lakh agriculture households across the State. It includes 33 lakh KCC holders of Co-operative banks and 12 lakh KCC holders of commercial banks. This list shall form the base list for identification of farmers.
- (ii) OSCB shall take steps to update and computerize the list by 30th September' 2010. Thereafter the Panchayat wise list shall be prepared in each district.
- (iii) All the FICs shall be verified and renewed with the help of revenue officials. The FICs should bear a unique number and be printed in a manner that these documents are not easily forged. A list of FICs renewed shall be

computerized and maintained in each district, Panchayat wise.

- (iv) Genuine Farmers may be allowed to sell their paddy through KCC / Land Pass Book/Record of Rights (Patta), FIC, Certificate of revenue officials etc supported by Electors Photo Identity Cards (EPIC). In case the farmer has a KCC or Land Pass Book, FIC will not be necessary.
- (v) Collectors will ensure that no genuine farmer is denied access to paddy procurement operations and that the farmers do not face any difficulty in getting Farmers Identity Cards/other identity documents.
- (vi) Share-croppers ('bhag-chasi') will be provided FIC's with the consent of the farmer concerned in order to enable them to sell paddy at the MSP. They will be allowed to sell paddy to Government agencies on the basis of such FIC's or any other identity document approved by the Collector/Government.
- (vii) Alongwith farmers identity document every farmer will also be required to give his Bank account number of any Bank/Co-operative/Post Office and also same will be entered in Paddy Purchase register by concerned PPC.

11. **Delivery of Rice/Enforcement Certificates:-**

- (i) The delivery of levy rice by millers will be made on the basis of Enforcement Certificate (EC) countersigned by the District Collectors. Custom Milled Rice of State agencies will be delivered to FCI/IOSCSC by Delivery Certificate issued by the Dist representative of the State agency basing on the verification report of the Civil Supplies staff in charge of the mill. In case of paddy procured directly by the FCI from the farmers, without any intermediary agency, the Delivery Certificate will be issued by the Area Managers of the FCI.
- (ii) The levy target of the rice mills should be fixed scientifically on the basis of milling capacity, storage capacity of godowns, infrastructure facilities of the mills such as boiler, dryer, drying yards etc and financial capacity of the miller. Collectors should verify the above

aspects before fixing the Miller's target and will also ensure that levy due and CMR is collected from each rice mill before it is allowed to sell the "free-sale" stock.

- (iii) The Civil Supplies Executive staff in-charge of the Mill should verify the paddy purchase by the State agencies/Millers and issue verification certificate on being satisfied that the paddy has been procured from the farmers on payment of MSP and the rice has actually been produced by the Custom Miller engaged by the State agencies/ Millers out of the paddy procured by them. On the basis of the verification certificate, there should be strict monitoring of Enforcement Certificate for levy rice, which should be countersigned by the Collector of the district or officers authorized by the Collector on the basis of paddy purchased by the miller agents. Similarly basing on the verification certificate, the delivery certificate will be issued by the district representative of the State agencies for delivery of CMR to FCI/OSCSC Ltd.
- (iv) The Enforcement Officer shall periodically and not less than once a week, verify the paddy and levy rice stocks of the miller agent and furnish all information to the Collector for issue of the Enforcement Certificate in the relevant form. The Civil Supplies staff in charge of the mill shall verify the stocks received from Government agencies and to submit the verification report to the district representative of the State agencies for issue of Delivery Certificate.
- (v) The electricity/ energy bills and the infrastructure facilities of the mill and records relating to VAT, etc shall be checked by the Civil Supplies staff to assess whether the mills have actually produced the specified quantities and varieties of rice during the period.

12. **Uncertified Boilers:-**

Millers having uncertified crude boiler should not be allowed to undertake procurement and processing of paddy into parboiled rice with such uncertified boilers. However, mills may be allowed to

process and deliver raw rice if they do not have boilers for producing parboiled rice.

13. Some districts in the State have inadequate milling capacity compared to paddy production. Appropriate arrangements should be made for procurement of paddy in such districts by Government agencies and private rice millers and for milling of such paddy in districts where surplus capacity exists.

14. **Trading in rice and paddy:-**

- (i) As per the Removal of (Licensing requirements, Stock limits and Movement Restrictions) on Specified Foodstuffs Order, 2002 issued by Government of India, any dealer may freely buy, stock, sell, transport, dispose, acquire, use or consume any quantity of paddy/rice and shall not require a permit or a license there for under any order issued under the Essential Commodities Act, 1955. However, appropriate safeguards should be taken to ensure the payment of Minimum Support Price at the time of purchase.
- (ii) There shall be no restriction on movement of rice and paddy by producers/cultivators from one district to another within the State and to outside the State. However, Minimum Support Price must be paid for purchases and appropriate supporting documentation should be kept on record and produced on demand by competent authorities.

15. The Food Supplies and Consumer Welfare Department shall have the power to prescribe operational guidelines and to issue clarifications, as and when required, to achieve the objectives of the Food and Procurement Policy for the KMS 2010-11, which would be final and binding on all agencies procuring paddy and coarse-grains in accordance with the "Food and Procurement Policy".

16. (i) Food Supplies & Consumer Welfare Department in consultation with Agriculture Department shall prescribe uniform yield for the same command area of an irrigation project of different districts.
- (ii) The Collectors of the districts will be personally responsible for monitoring procurement, ensuring

payment of Minimum Support Price to farmers and preventing recycling of subsidized rice and avoiding distress sale of paddy.

- (iii) There shall be a control room set up at each district level during the time of actual procurement operations. Collectors shall review the progress of procurement on a regular basis. Daily procurement of paddy at the decentralized PPCs and lifting by miller agents shall be closely. In case of slow lifting by millers, Collectors should take necessary action to ensure lifting of paddy from PPCs by the designated miller agents. Collectors will insist that the reports are given by the state agencies on daily basis and also through an online mechanism on the internet.
- (iv) The Collectors and the procuring agencies shall finalize the procurement programme immediately so as to ensure timely lifting of paddy arriving in market yards, Krushak Bazars and payment of farmers' dues in time.
- (v) Collectors shall draw up a plan for detailed verification through Revenue Officers of at least 10% of the farmers who have sold more than 100 quintals of paddy at PPC's/Mandi's during the KMS 2010-11 and would send this report in prescribed format to the FS&CW Department.
- (vi) In consultation with the District Millers Association, Collectors will assign Millers to each PPC. The miller or his representative will remain present on the procurement days. To avoid storage of stocks at the PPC, the assigned millers shall ensure lifting of the paddy on a regular basis. The Rice Millers shall undertake simultaneously the custom milling of paddy procured by state agencies or FCI, as per the agreed terms and conditions and at the rates and norms framed by the Govt. of India.
- (vii) The Collector of the district shall make fortnightly review of the paddy purchased, paddy delivered to custom millers and CMR received from the custom millers. The Collector will take necessary action wherever required under intimation to F.S. & C.W. Department.

(viii) The Collector shall be responsible for convening District Procurement Committee Meetings at regular intervals as per the directions of F.S. & C.W. Department.

You are instructed to implement the "Food and Procurement Policy" scrupulously. The district administration should make all out efforts to prevent distress sale of paddy and timely payment of all legitimate dues to the farmers in all transaction.

Yours faithfully,

Sd/- 8.10.2010

(Ashok K.K. Meena)

Commissioner-cum-
Secretary to Govt.